

BUTERE MUMIAS EVALUATION PAPER

GRADE 2 TERM I-2019

ENVIRONMENTAL



Name _____

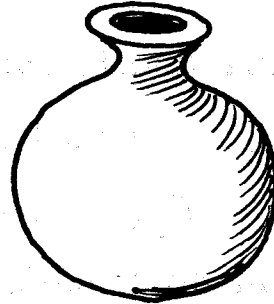
School _____

Date _____

1. We go to _____ to learn.
(school, church, hospital)
2. Rubbish should be thrown in the _____
(paper, bucket, dustbin)
3. _____ are people we don't know.
(parents, friends, strangers)
4. Which one of these is not needed to learning?

(pencils, books, wheelbarrows)
5. Houses protect us from _____
(people, light, rain)
6. Every Monday morning we all meet at the school _____
(toilet, assembly, compound)
7. When crossing the road, we use a _____
(ladder, zebra crossing, bridge)
8. The office where our teachers work from is called a _____
(kitchen, staffroom, bathroom)
9. When we are at school we should follow _____
(cows, school rules, friends)

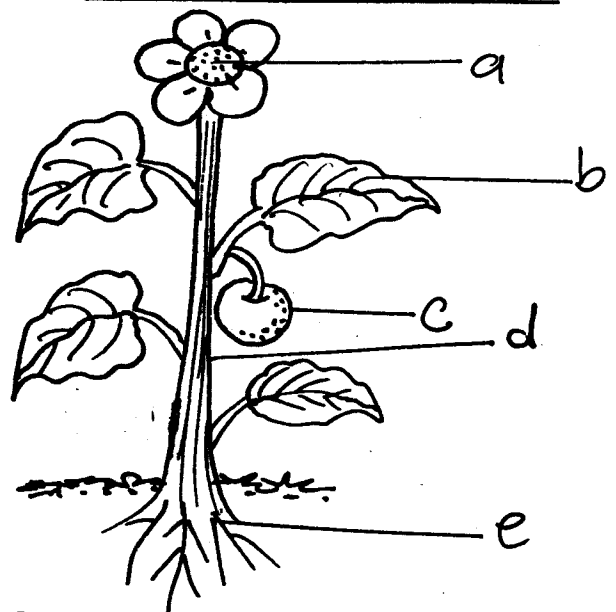
10. This object is made from _____



(wood, clay, sand)

11. A nuclear family has father, mother and _____
(friends, children, animals)
12. A guitar produces sound by _____
(hitting, blowing, plucking)
13. We sit in a shade when the weather is _____
(windy, sunny, rainy)

Name the parts of a plant



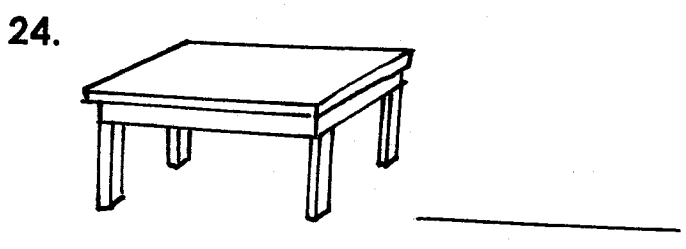
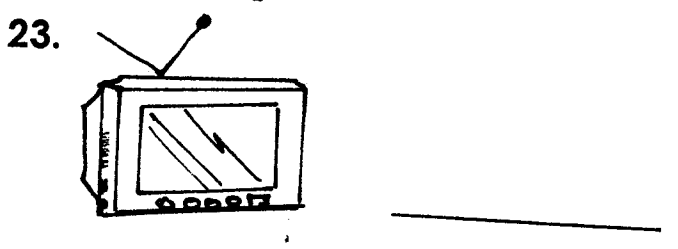
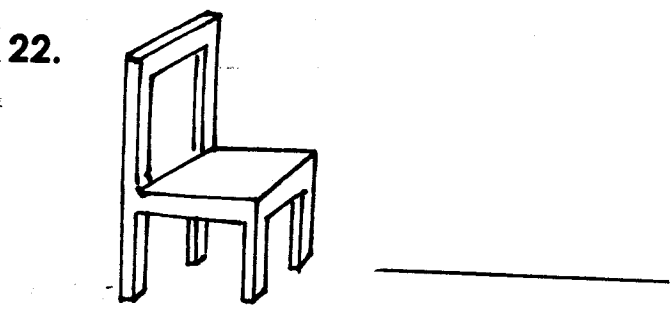
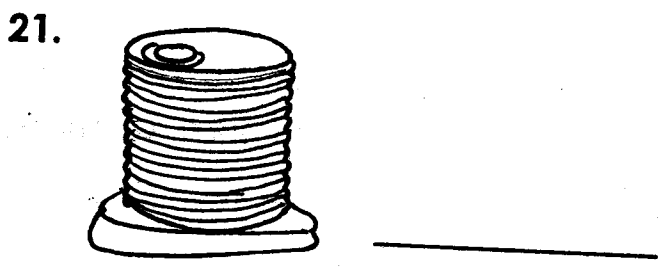
14. a _____
15. b _____

- 16. e _____
- 17. c _____
- 18. d _____

19. Many trees growing together make a _____
(house, forest, school)

20. A class _____ helps the teacher by controlling the class.
(watchman, cook, prefect)

Name the following

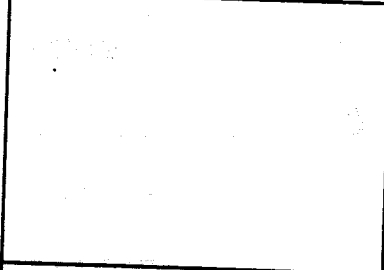
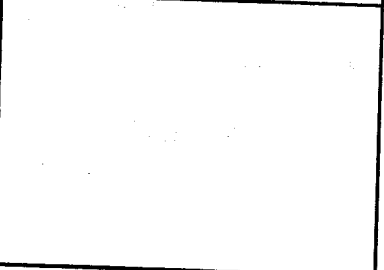
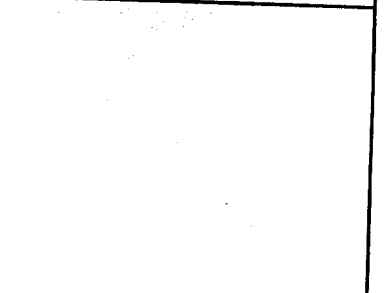
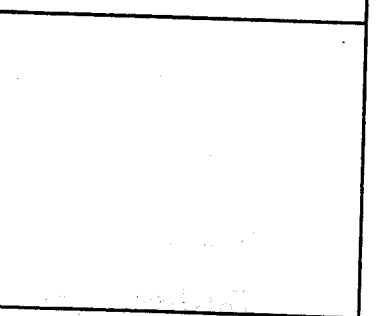


25. To be safe in school we should not touch loose _____ wire.
(playing, jumping, electric)

26. When traffic lights turn red the cars must _____
(move, run, stop)

27. We should wear _____ to protect our hands.
(hat, socks, gloves)

Draw the following

28. Razorblade	
29. Needle	
30. Jiko	
31. Lamp	

32. Animals should be _____
(beaten, protected, killed)

33. Water that comes from the sky is called _____
(rain, river, forest)