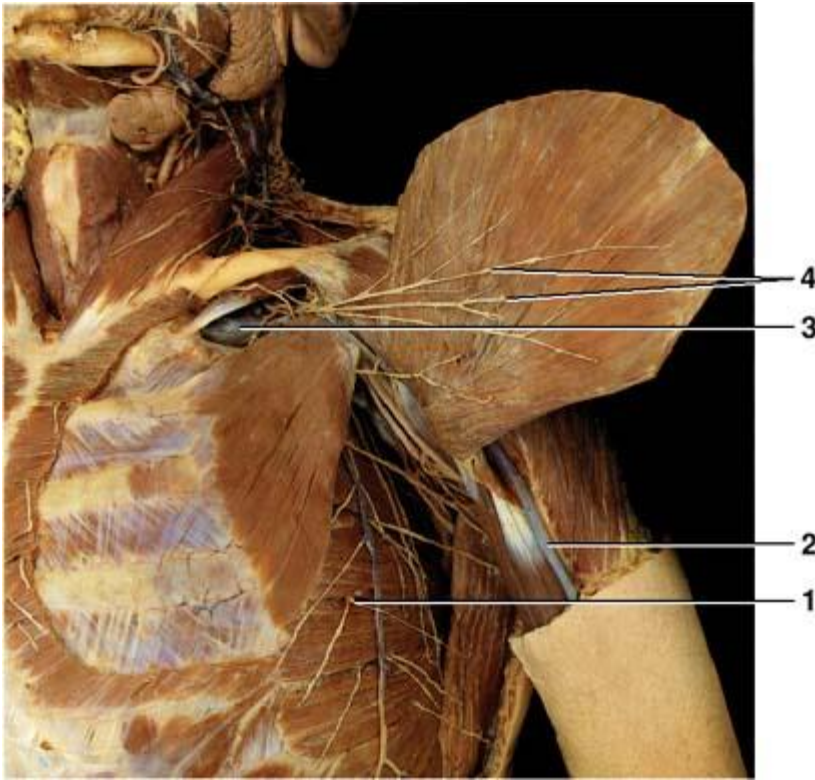
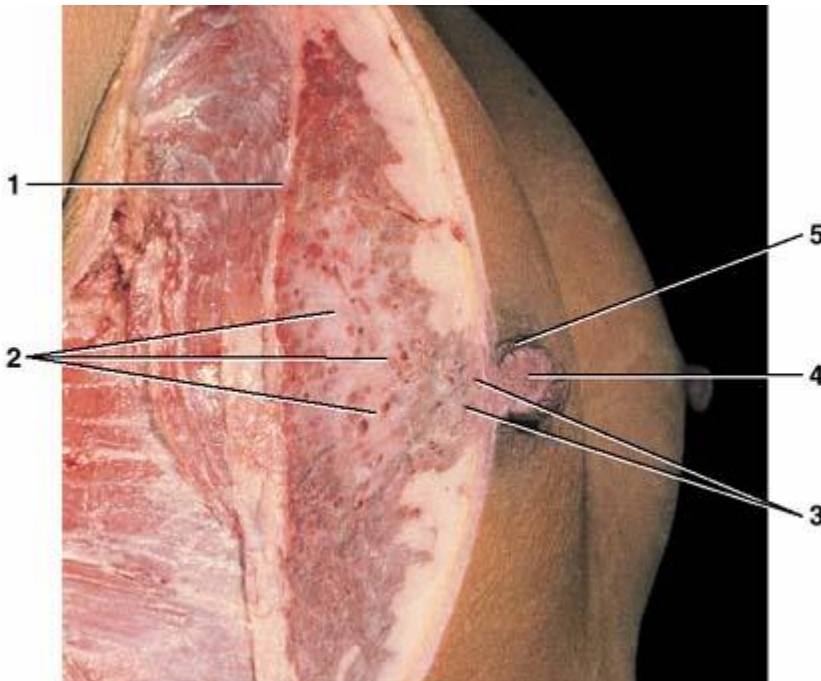


JB REVISION PROGRAMME

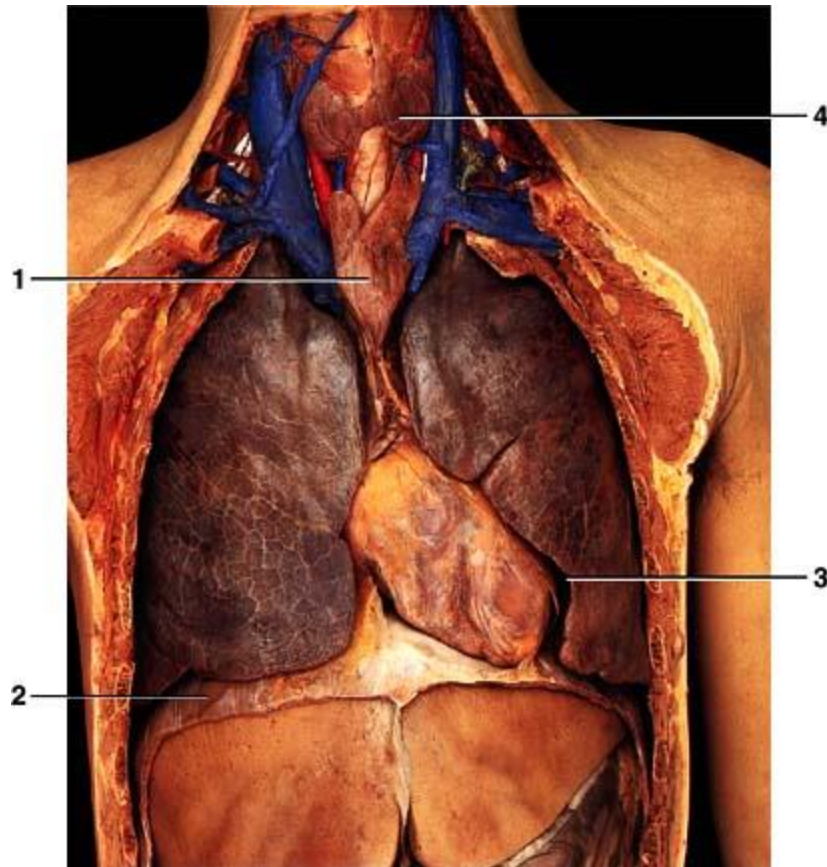


- lateral cutaneous branch of intercostal nerve (thoracic ventral ramus)
- cephalic vein; enters axillary vein after traversing deltopectoral groove
- axillary vein; becomes subclavian vein at lateral border of first rib
- lateral pectoral nerves; branches of lateral cord of brachial plexus that innervate pectoralis major and minor



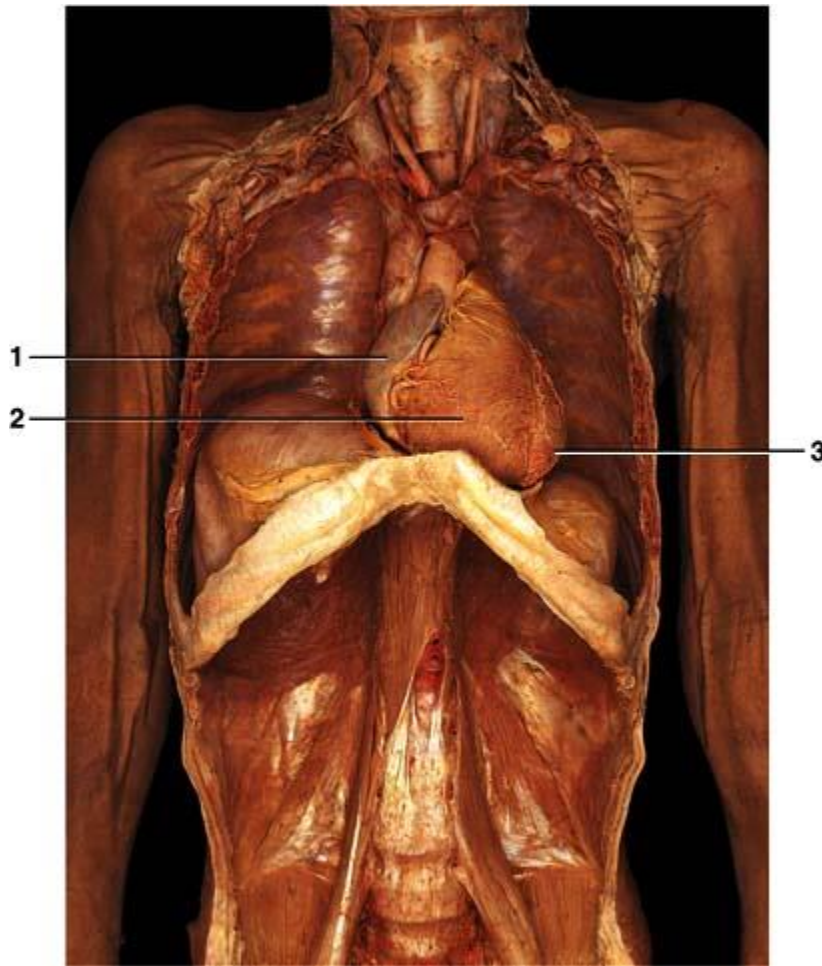
- deep fascia overlying pectoralis major
- mammary gland
- lactiferous sinus
- nipple
- areola

JB REVISION PROGRAMME



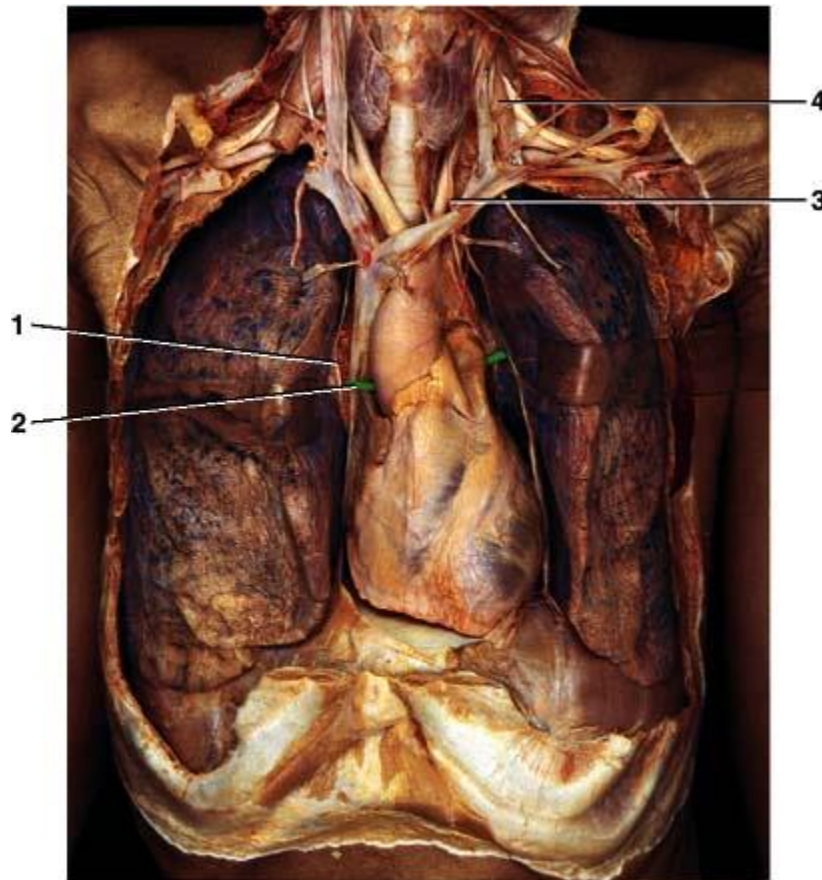
- thymus; atrophic, but still evident in this cadaver
- diaphragm; innervated by phrenic nerve
- cardiac notch of left lung
- thyroid; left lobe

JB REVISION PROGRAMME



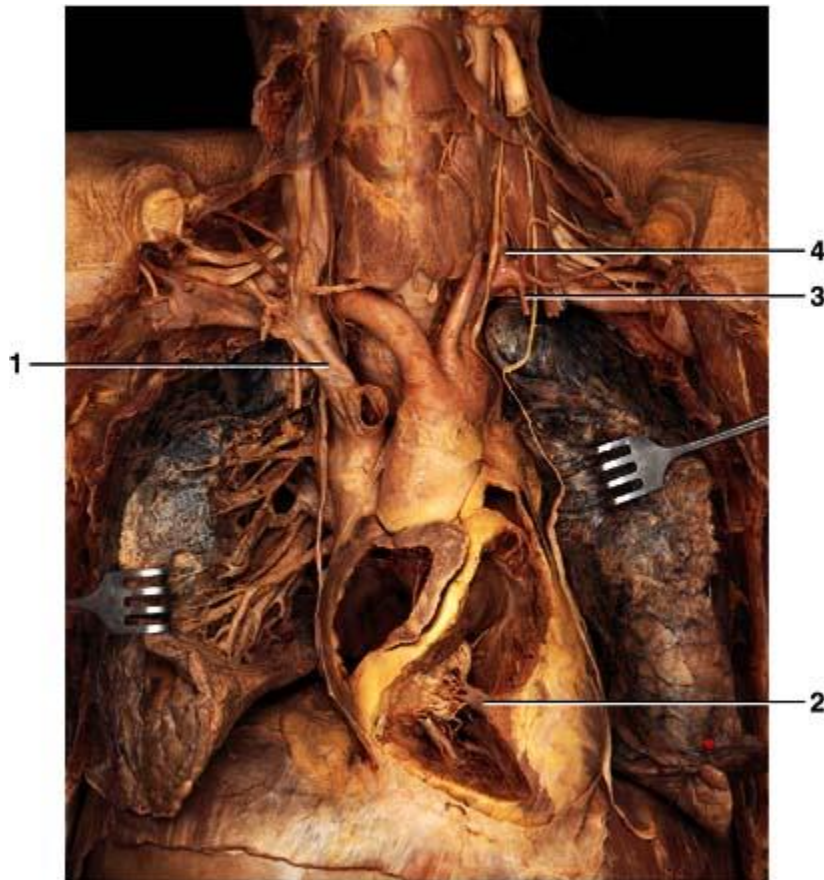
- right atrium; forms right border of heart
- right ventricle; forms most of sternocostal surface of heart
- left ventricle; forms most of left border of heart

JB REVISION PROGRAMME

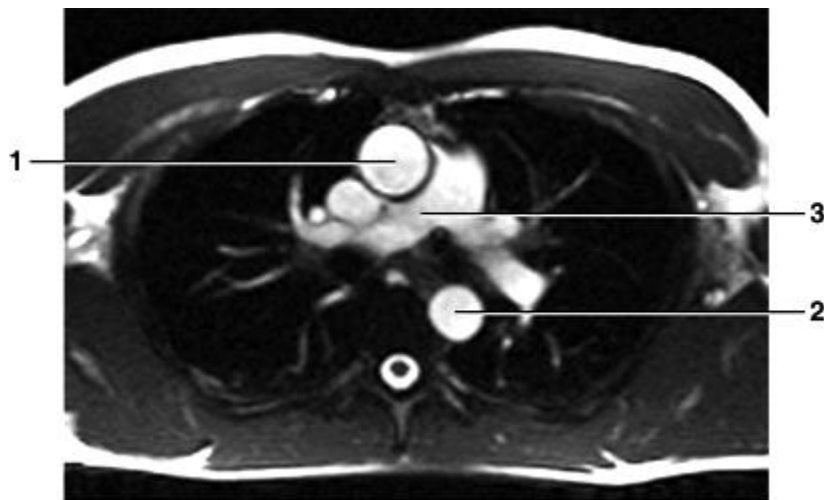


- right phrenic nerve; passes anterior to root of lung
- transverse pericardial sinus
- left vagus nerve; paralleling left common carotid artery
- scalenus anterior; note phrenic nerve on its surface and roots of brachial plexus emerging posterior

JB REVISION PROGRAMME

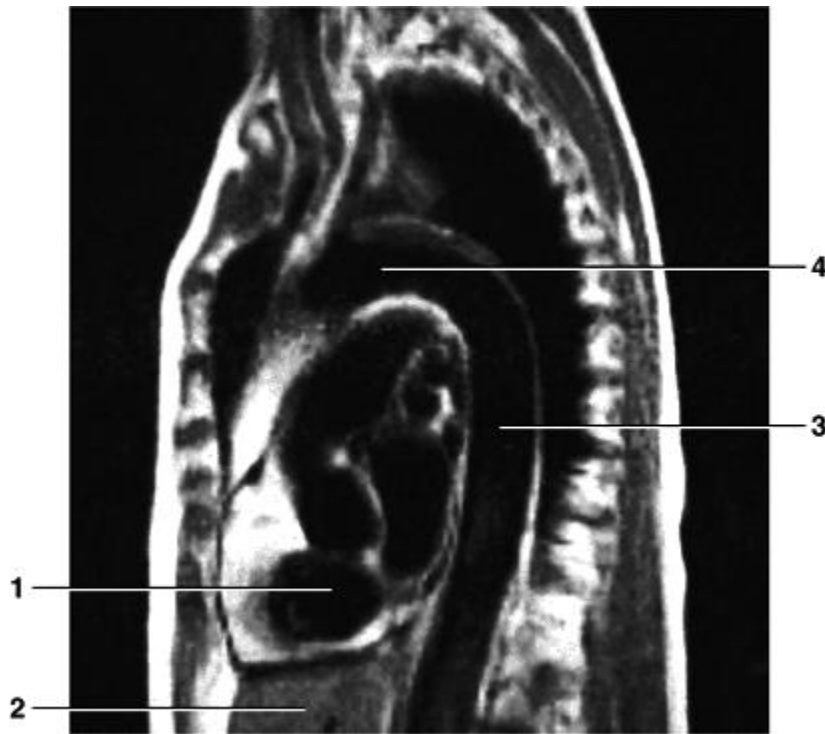


- right brachiocephalic vein; joins with left to form superior vena cava
- papillary muscle; in right ventricle
- internal thoracic (mamillary) artery; originates from subclavian artery
- vertebral artery; first branch of subclavian artery;



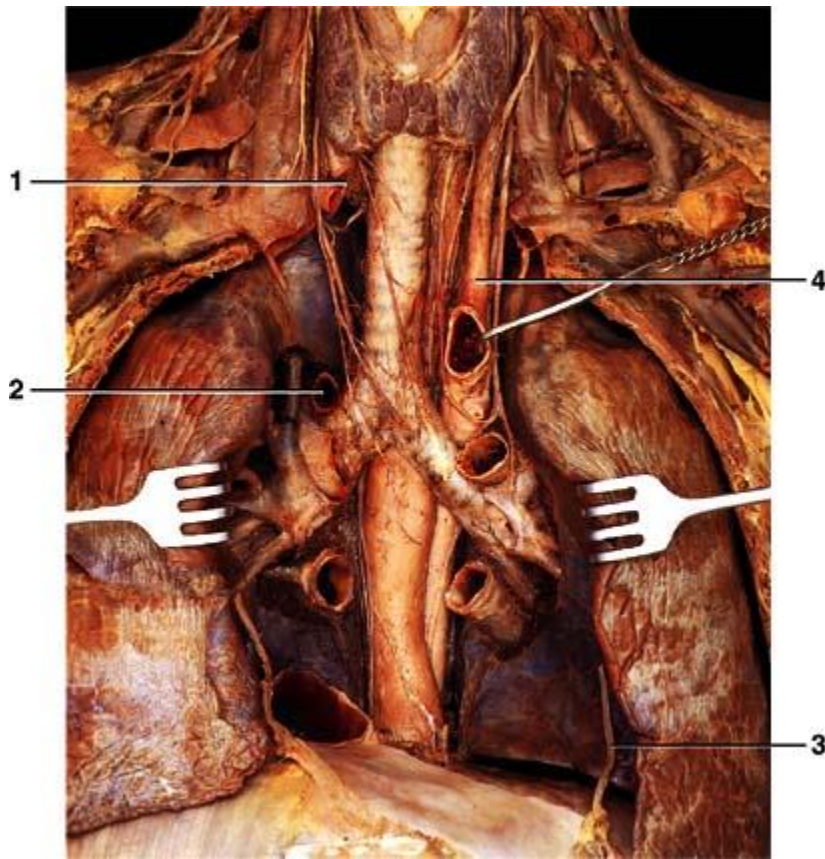
- ascending aorta
- descending aorta
- pulmonary trunk

JB REVISION PROGRAMME



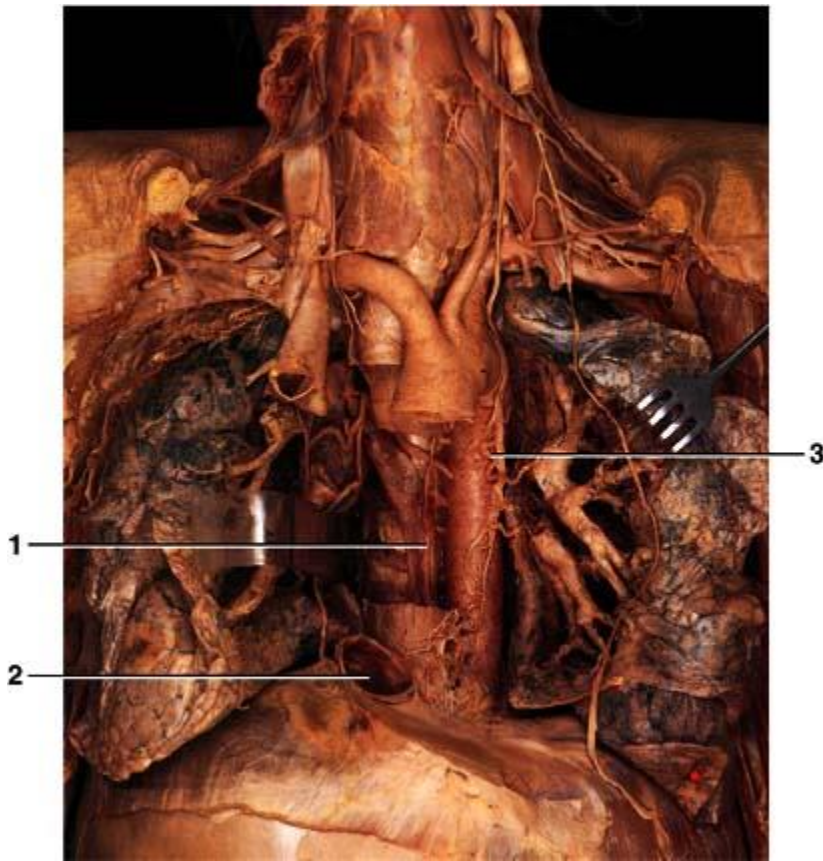
- left ventricle; forming apex
- liver
- thoracic aorta
- arch of aorta

JB REVISION PROGRAMME



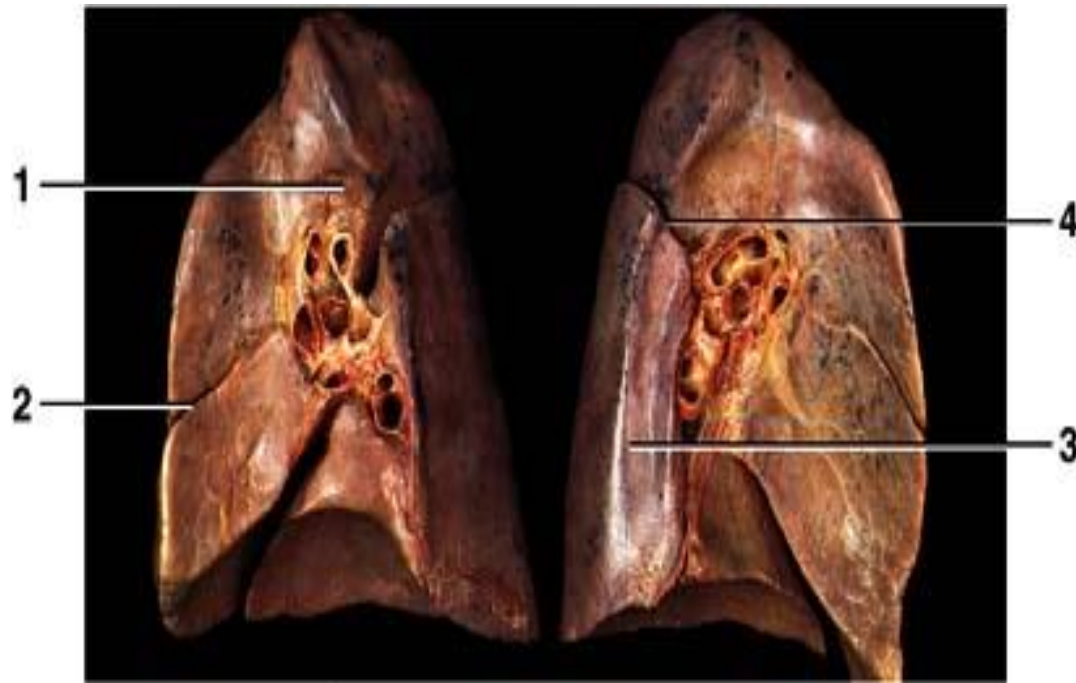
- right recurrent laryngeal nerve; arises from right vagus nerve and passes around right subclavian artery
- arch of azygos vein; enters superior vena cava
- left phrenic nerve; innervates diaphragm and conducts sensation (referred pain) from diaphragm, liver, and gall bladder to shoulder region (C3toC5) dermatome)
- left common carotid artery; second branch of aorta

JB REVISION PROGRAMME



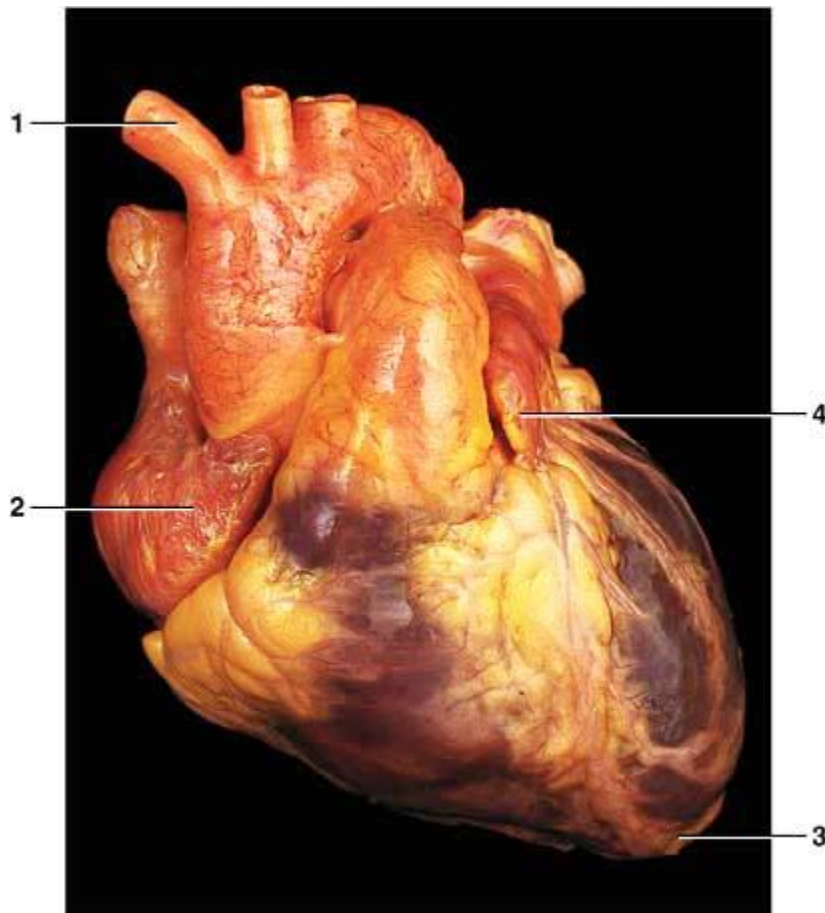
- thoracic duct; located posterior to esophagus on vertebral bodies
- inferior vena cava (opening)
- bronchial artery

JB REVISION PROGRAMME



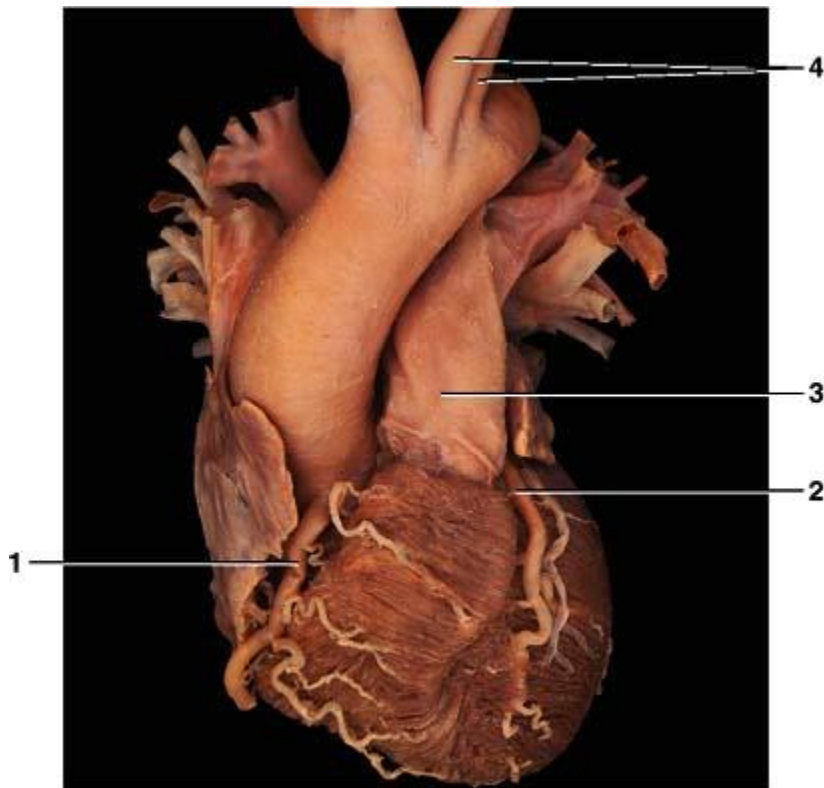
- groove for azygos vein; vein arches over root of right lung to enter superior vena cava
- horizontal fissure of right lung; right lung has two fissures, left has one
- groove for thoracic aorta
- oblique fissure of left lung

JB REVISION PROGRAMME



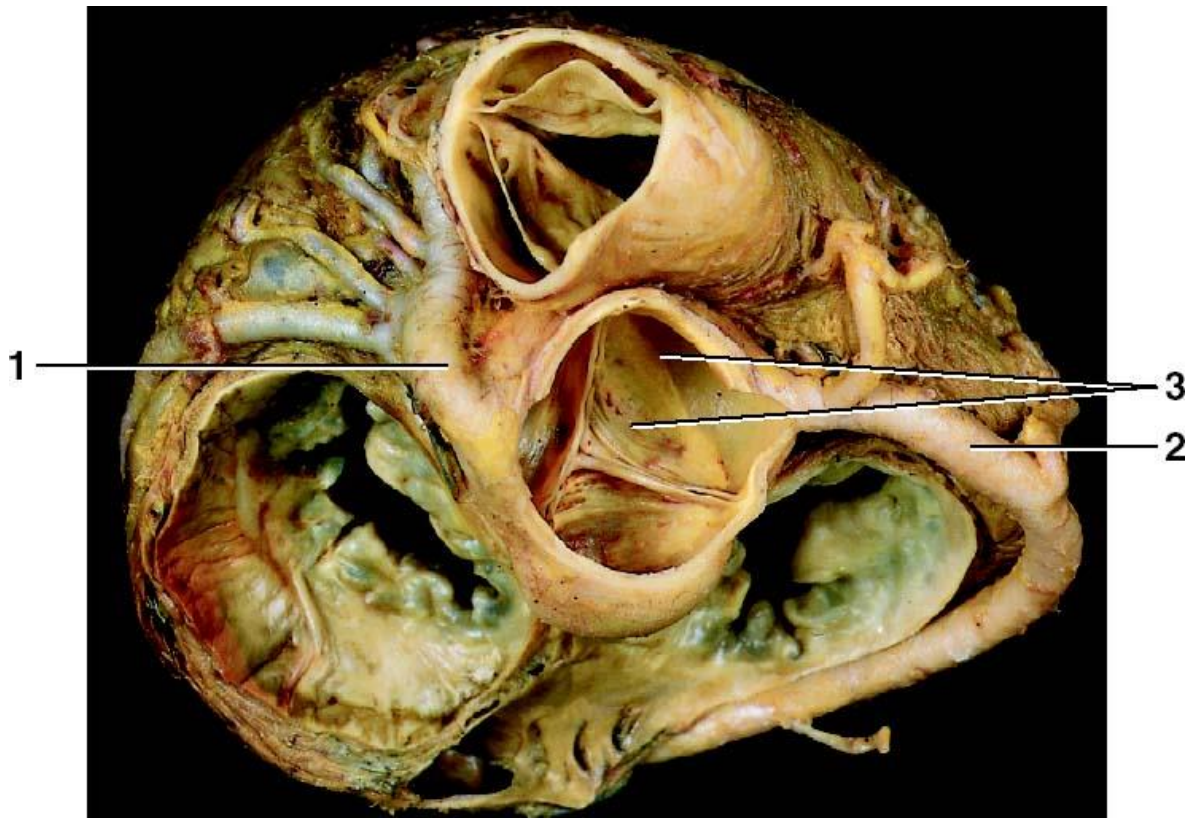
- brachiocephalic trunk
- right atrium
- apex of heart; tip of left ventricle in fifth intercostal space
- left auricle; represents embryological atrium

JB REVISION PROGRAMME



- right coronary artery traversing coronary groove
- left anterior descending artery (anterior interventricular; branch of left coronary); in anterior interventricular groove
- pulmonary trunk
- left common carotid and subclavian arteries; second and third branches of aorta

JB REVISION PROGRAMME



- left coronary artery
- right coronary artery
- cusps of aortic valve; closed during diastole

JB REVISION PROGRAMME