

PRACTICAL OF NEUROANATOMY

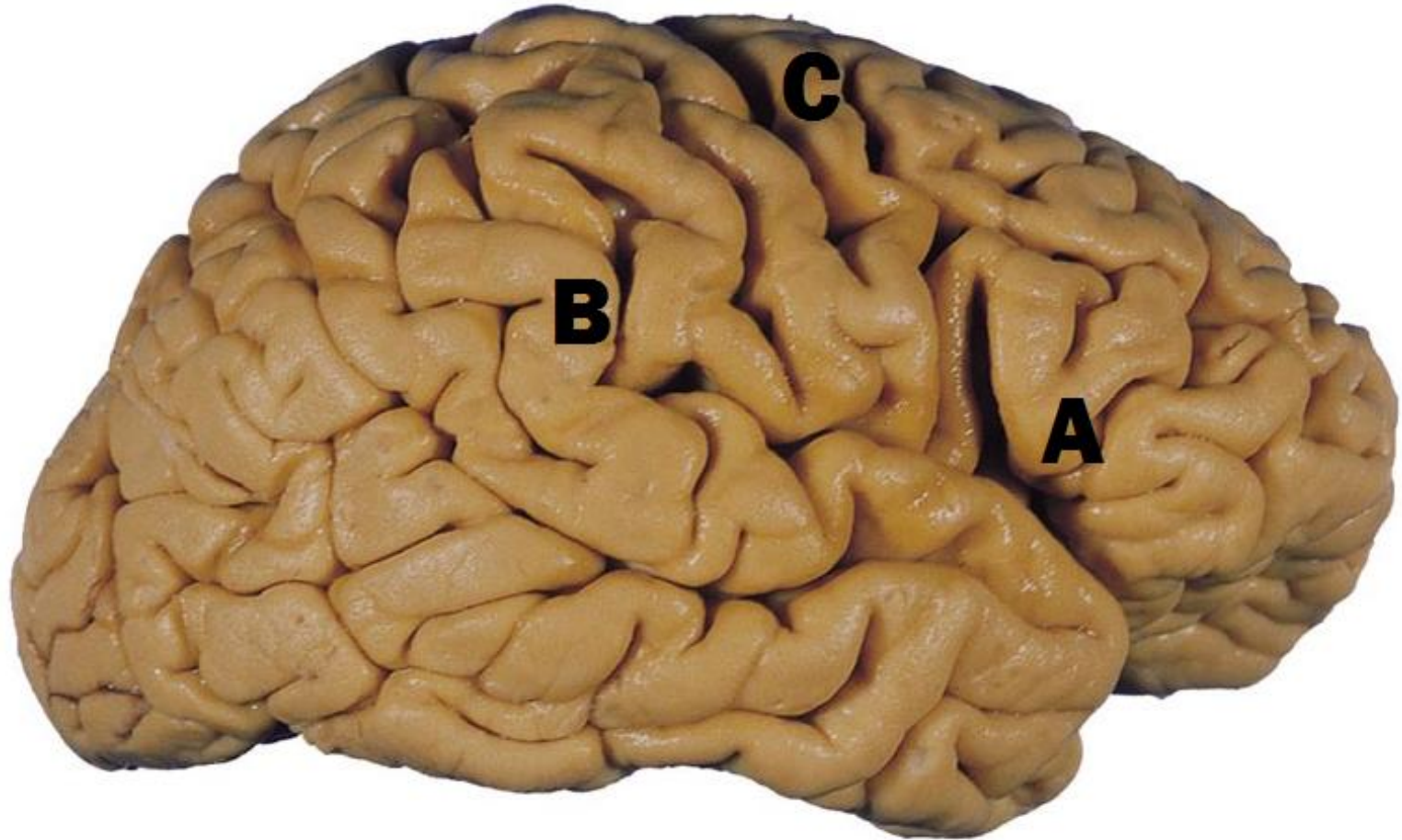
DR. BEDA OLABU

BSc Anat (Hons), MBChB

DEPARTMENT OF HUMAN ANATOMY

UNIVERSITY OF NAIROBI

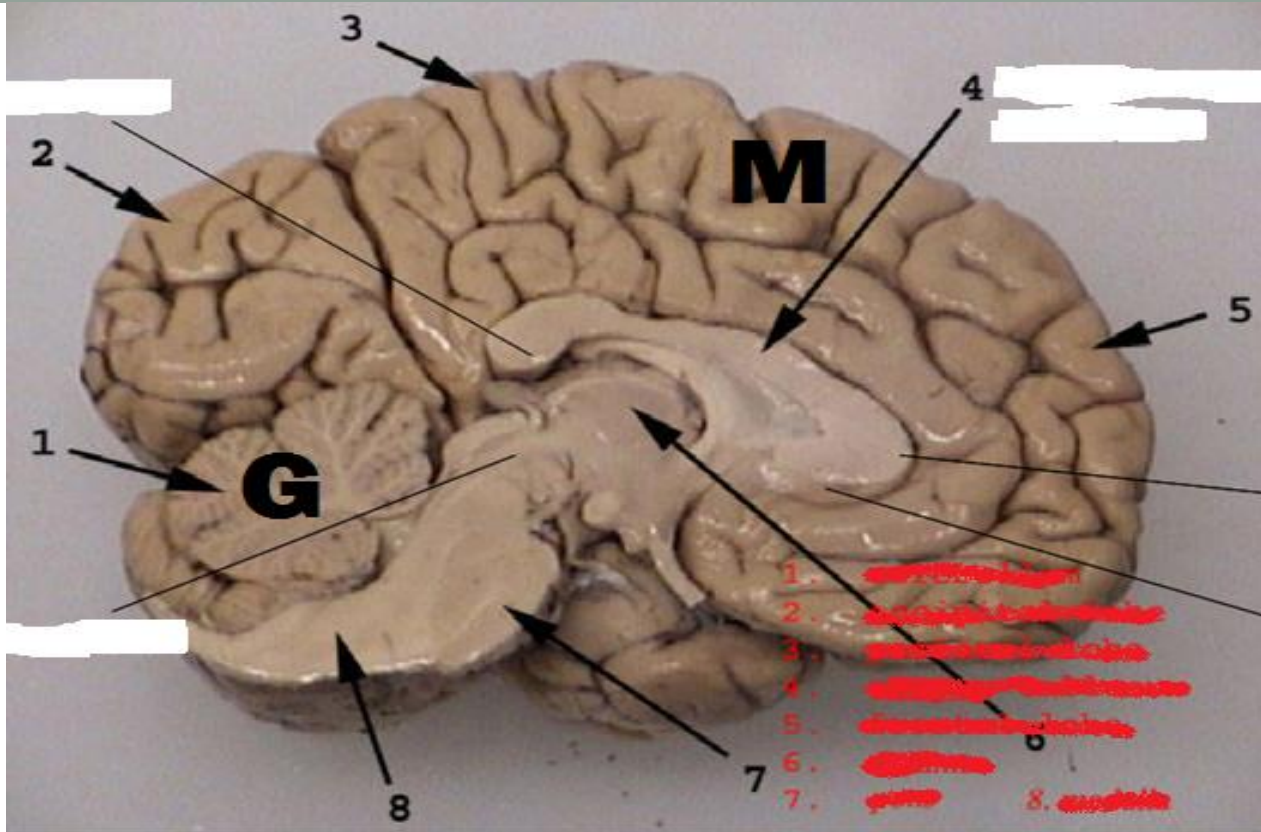
1



(a) Identify the functional areas A-C

(b) State the blood supply of C

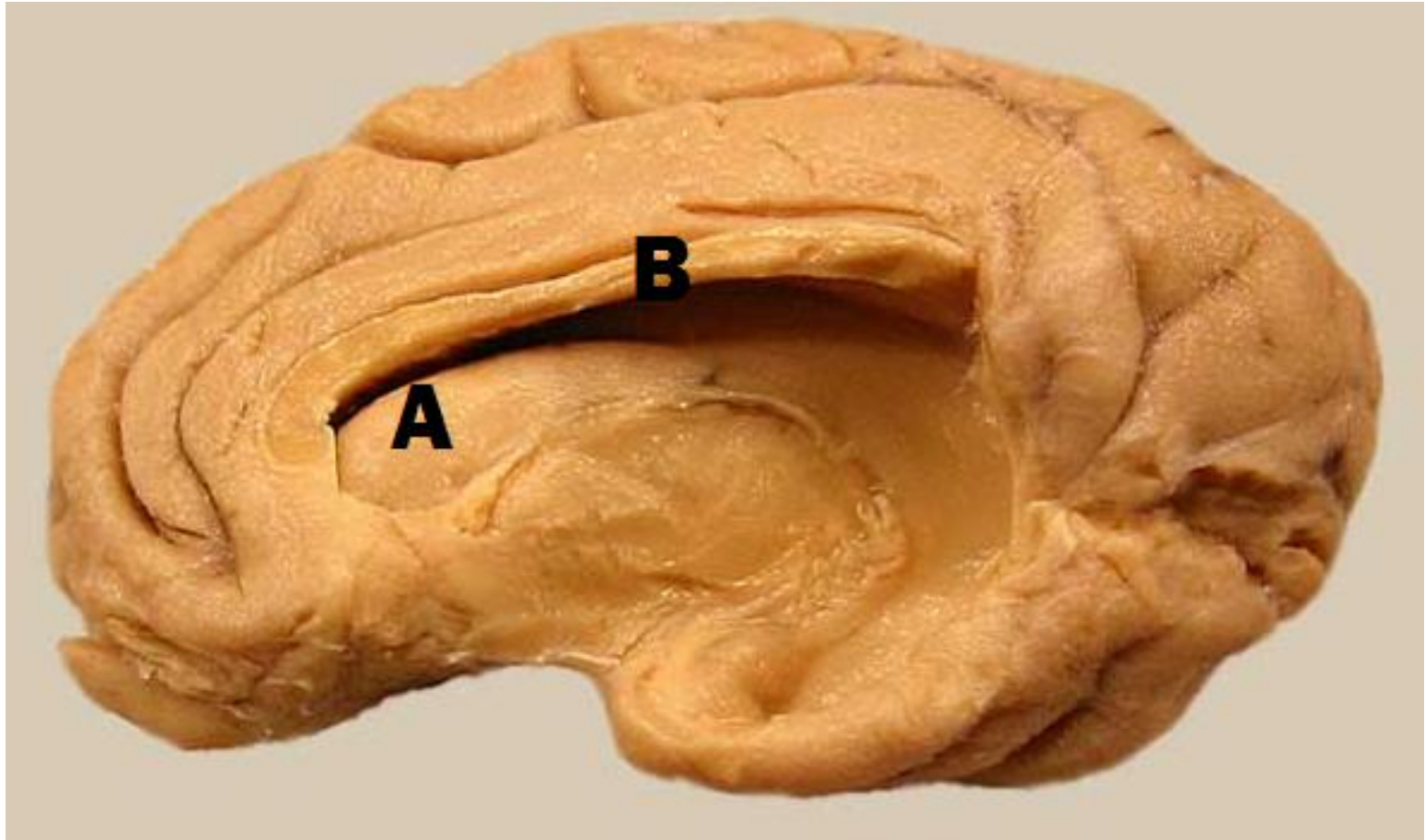
2



(a) Identify the parts labelled G and M

(b) List the clinical features associated with lesions of each

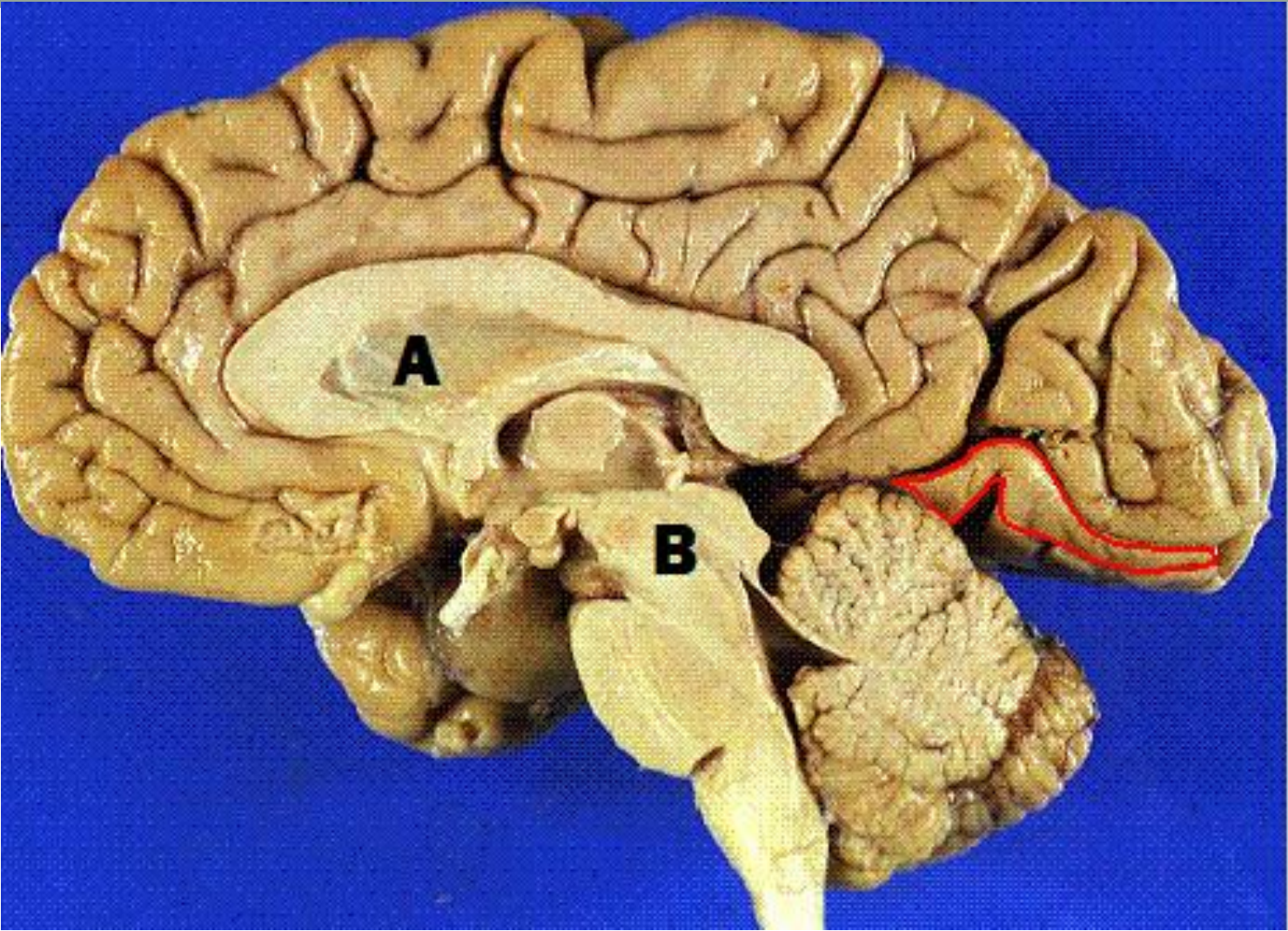
3



(a) Name the MAIN afferents to A

(b) Name and classify B

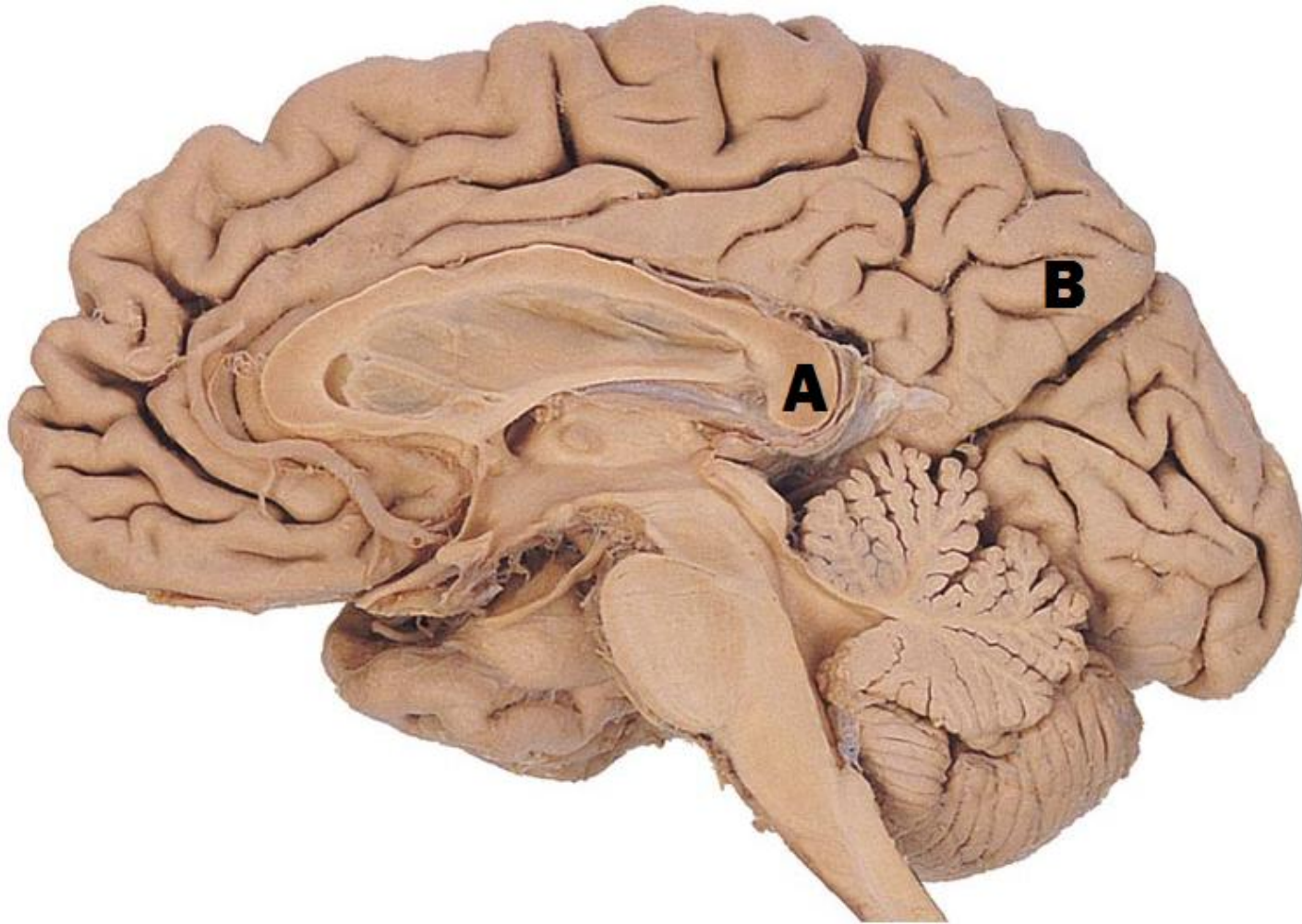
4



(a) Identify A and B

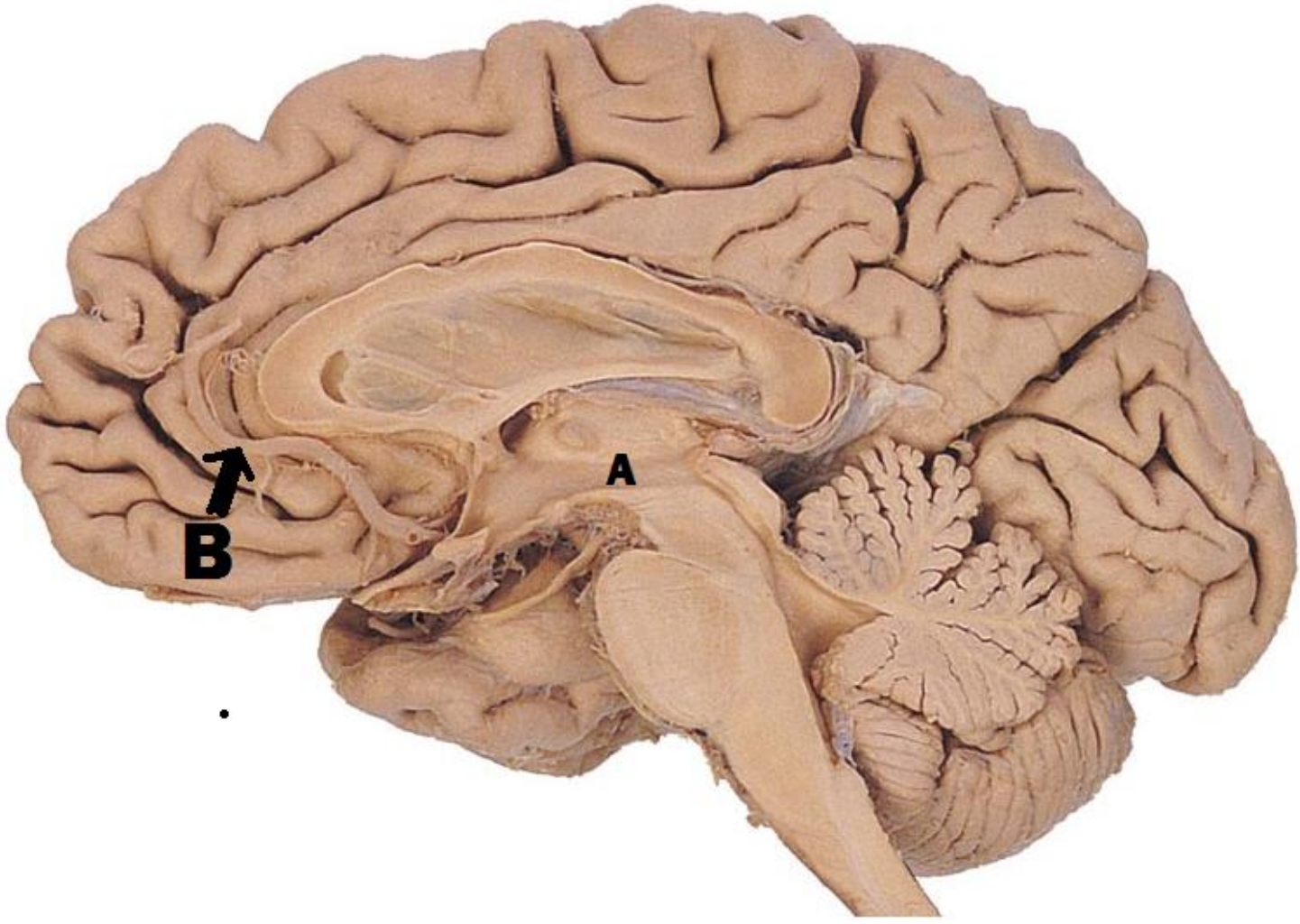
(b) Name the four motor nuclei in B

5



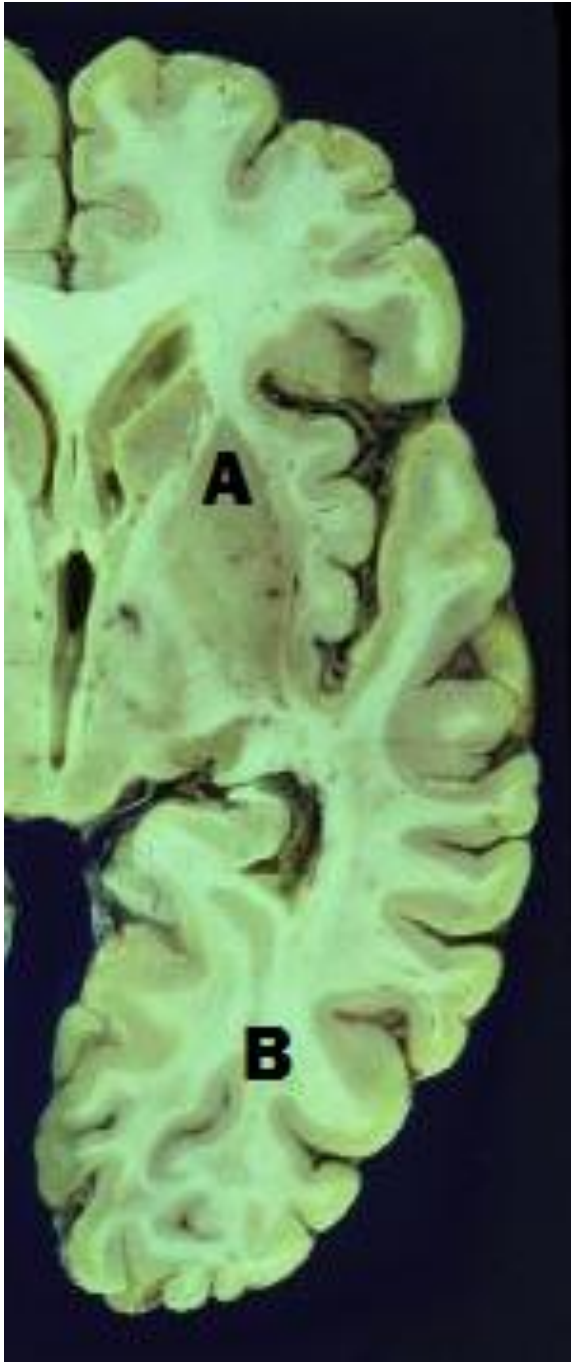
- (a) Identify the parts labeled A and B
- (b) Name any three sensory relay nuclei of the thalamus

6



- (a) Identify A and state its extent
- (b) Name the terminal branches of B

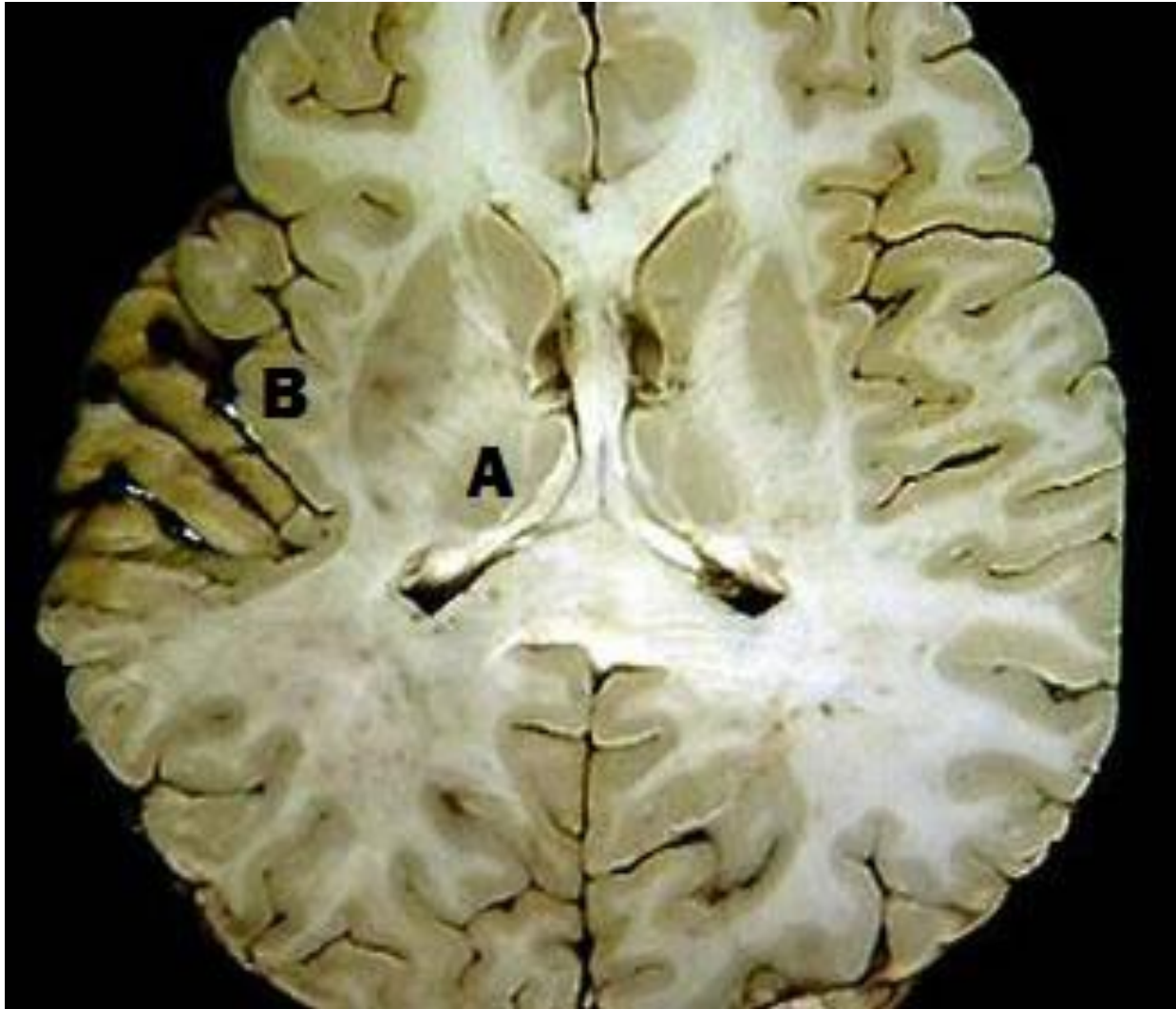
7



(a) Name the parts labeled A and B

(b) Name the structures which lie on the flow of the body of lateral ventricle

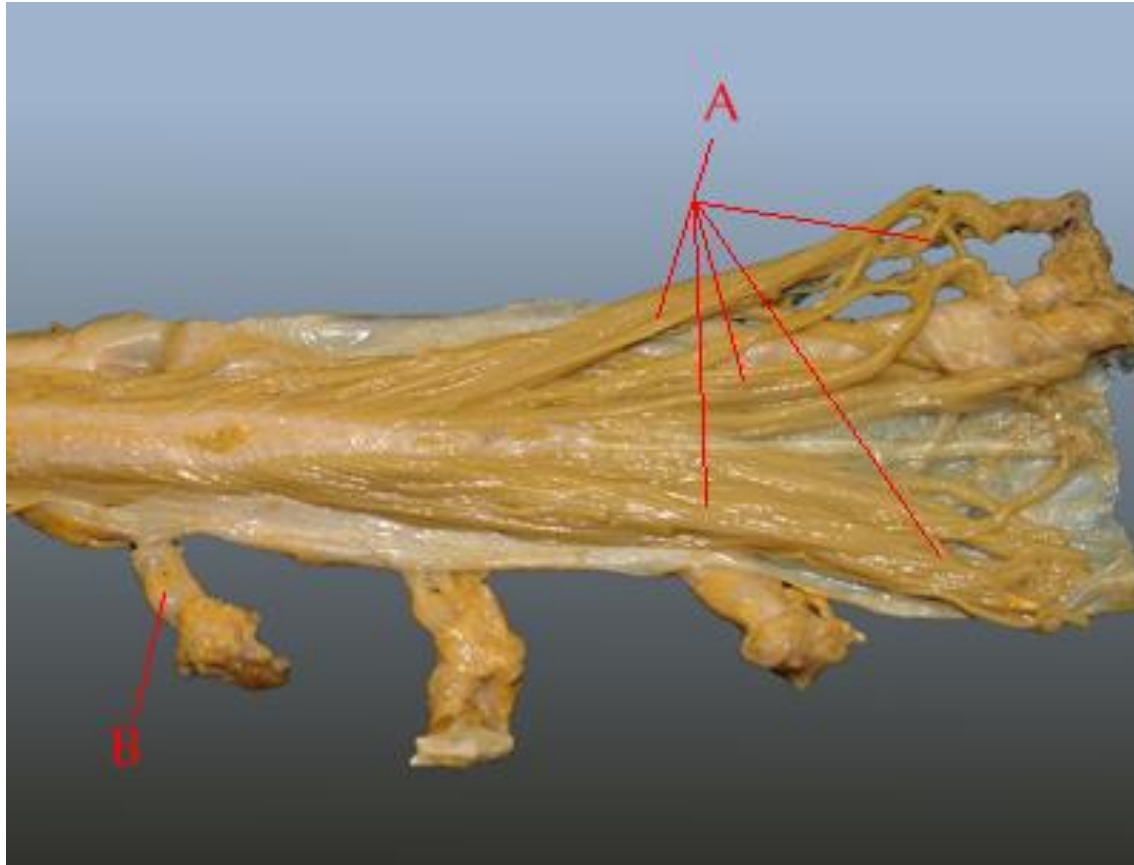
8



(a) Identify A and B

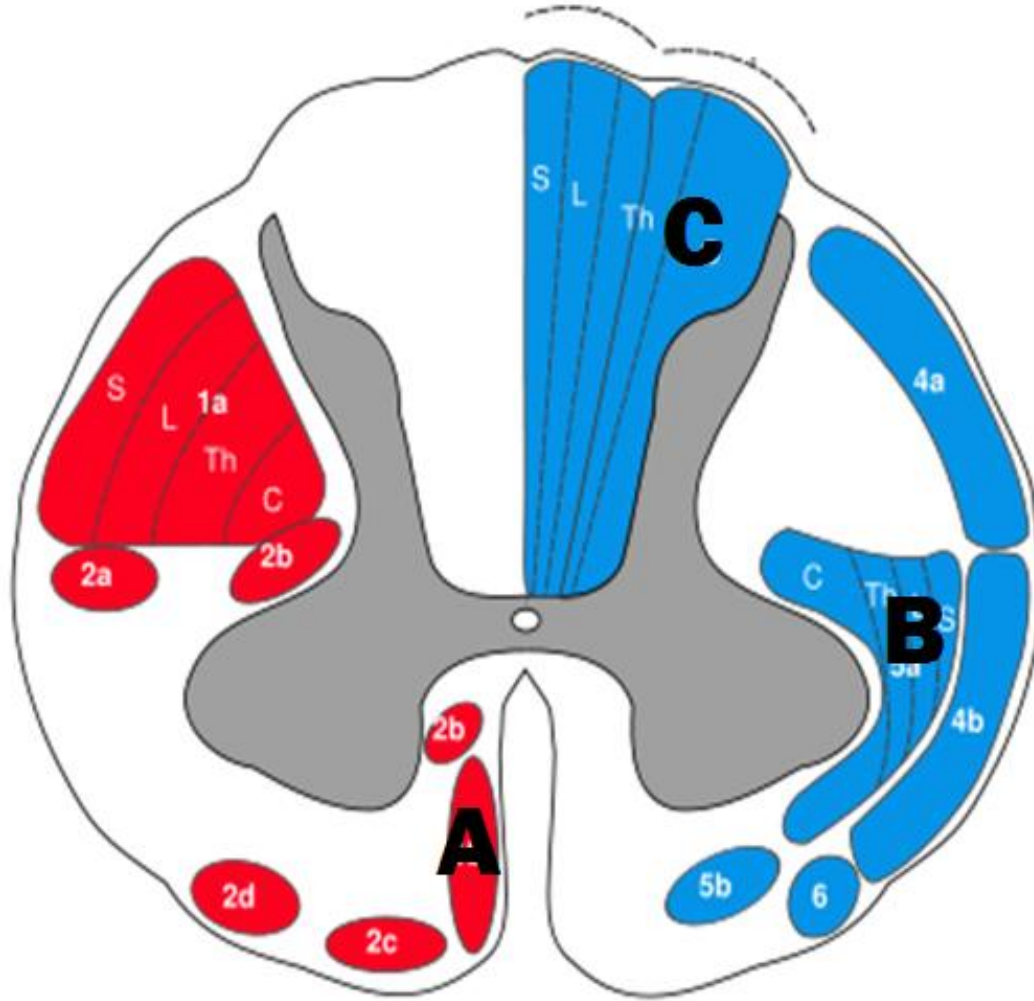
(b) List three functions of A

9



- (a) Identify the part of the nervous system labeled A and B
- (b) State the usual cord termination in three different stages of development

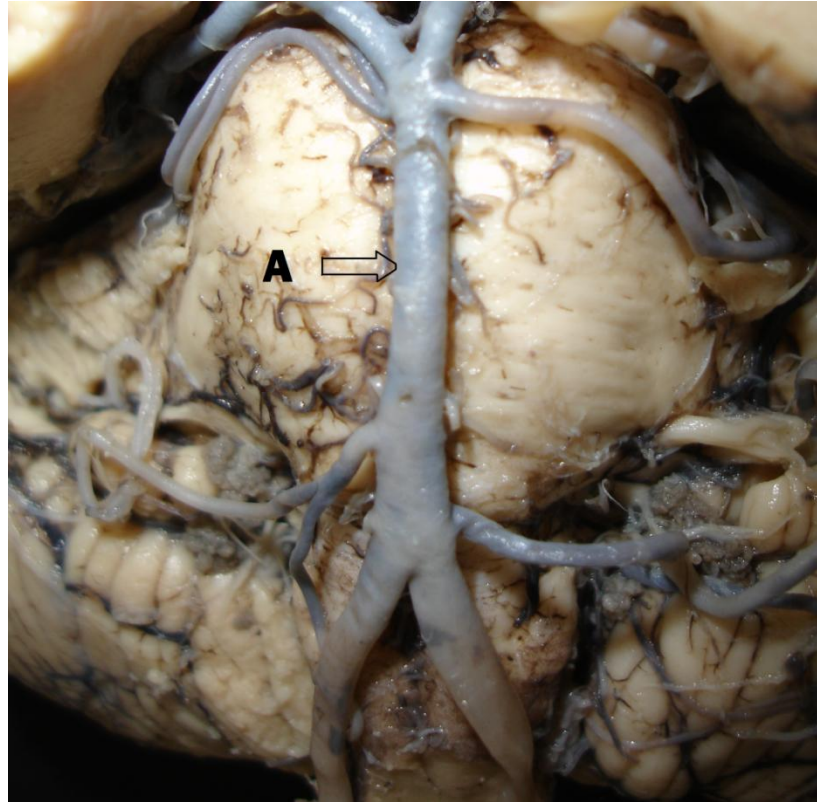
10



(a) Identify the fibre tracts A-C

(b) List three differences between B and C

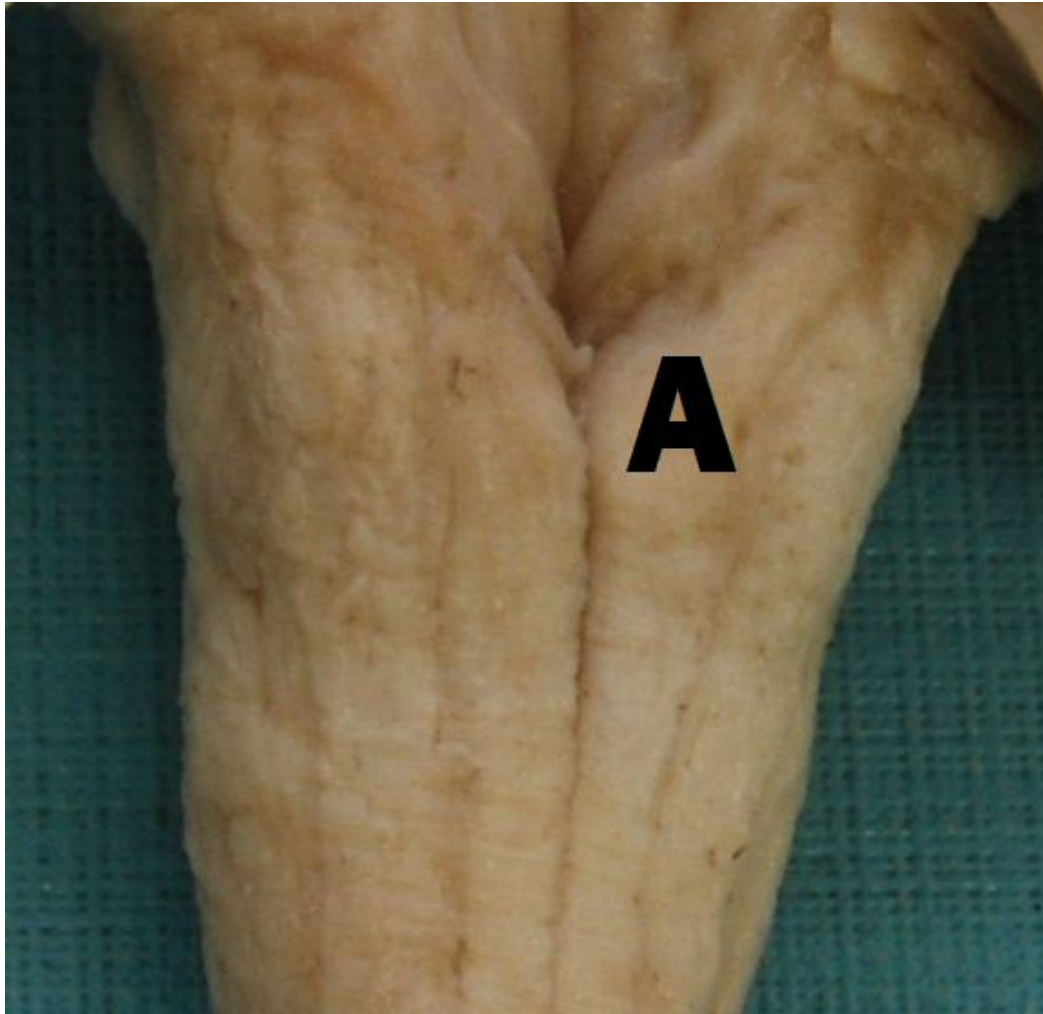
11



(a) List the branches of A

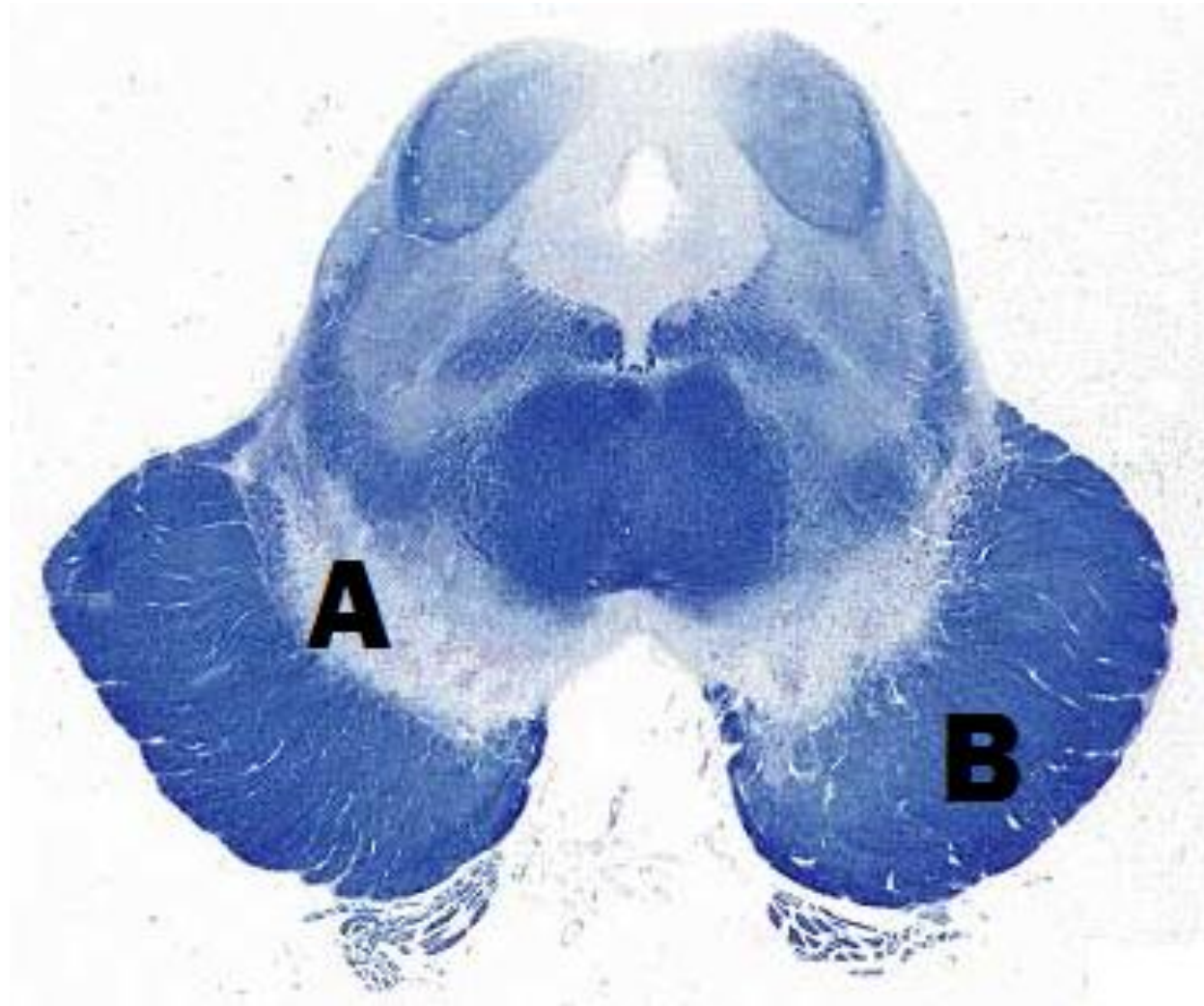
(b) Name the MAIN structures affected in medial medullary syndrome

12



- (a) Identify A and name the tract from it
- (b) Name two parts of the midbrain

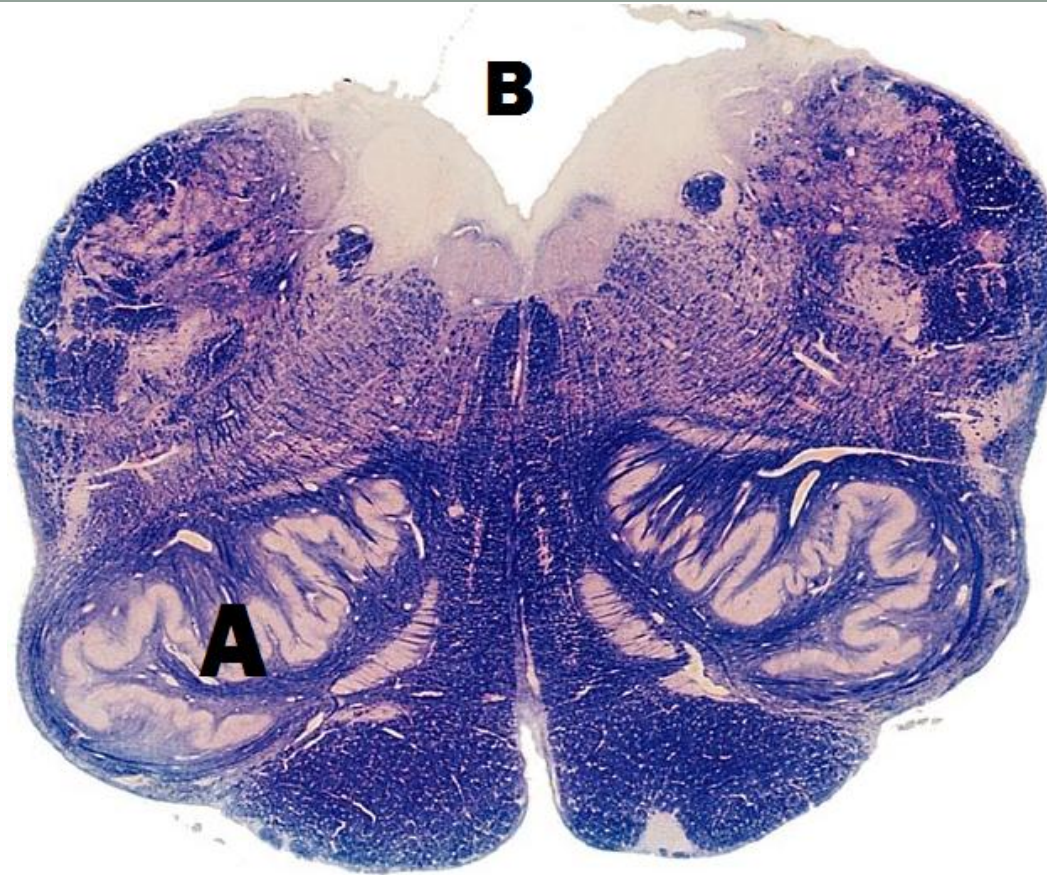
13



(a) Name the components of A and B

(b) Name one clinical significance of A

14

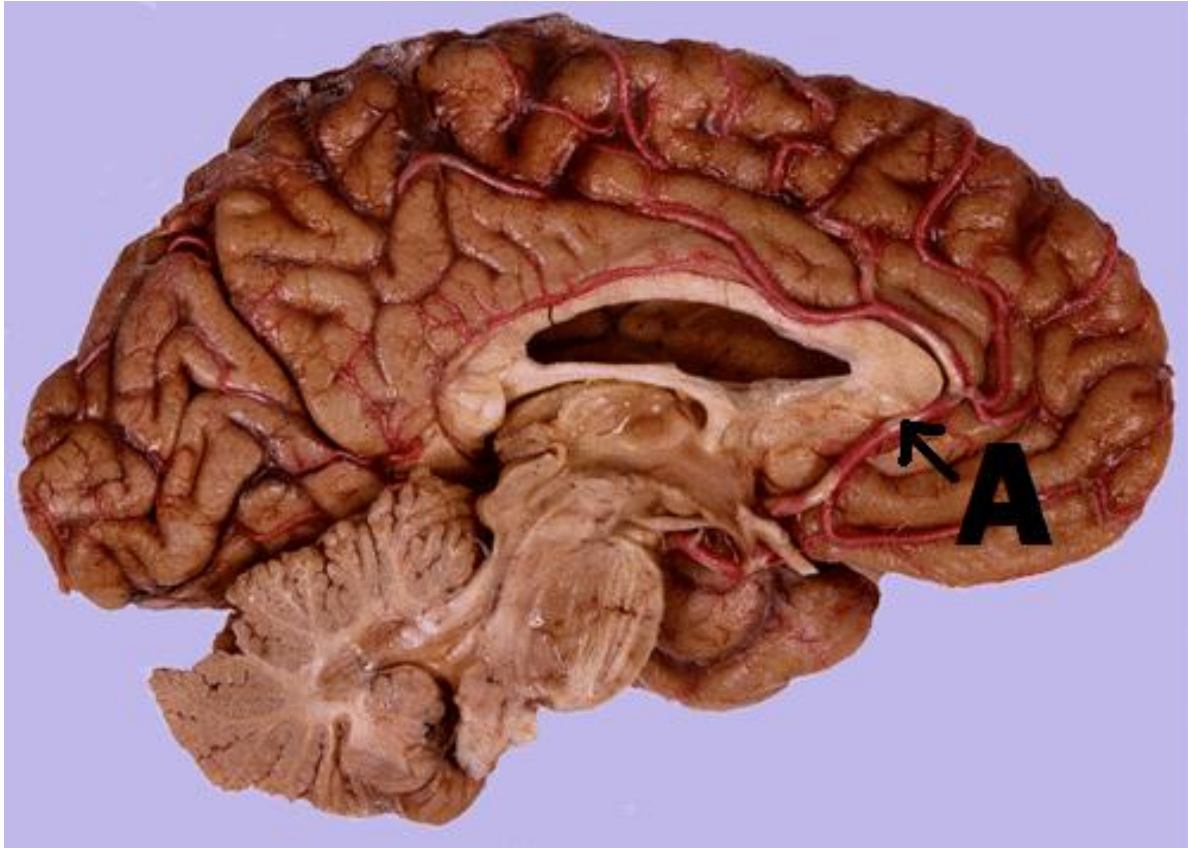


(a) Identify the parts of the nervous system shown

(b) State the function of A

(c) Identify B

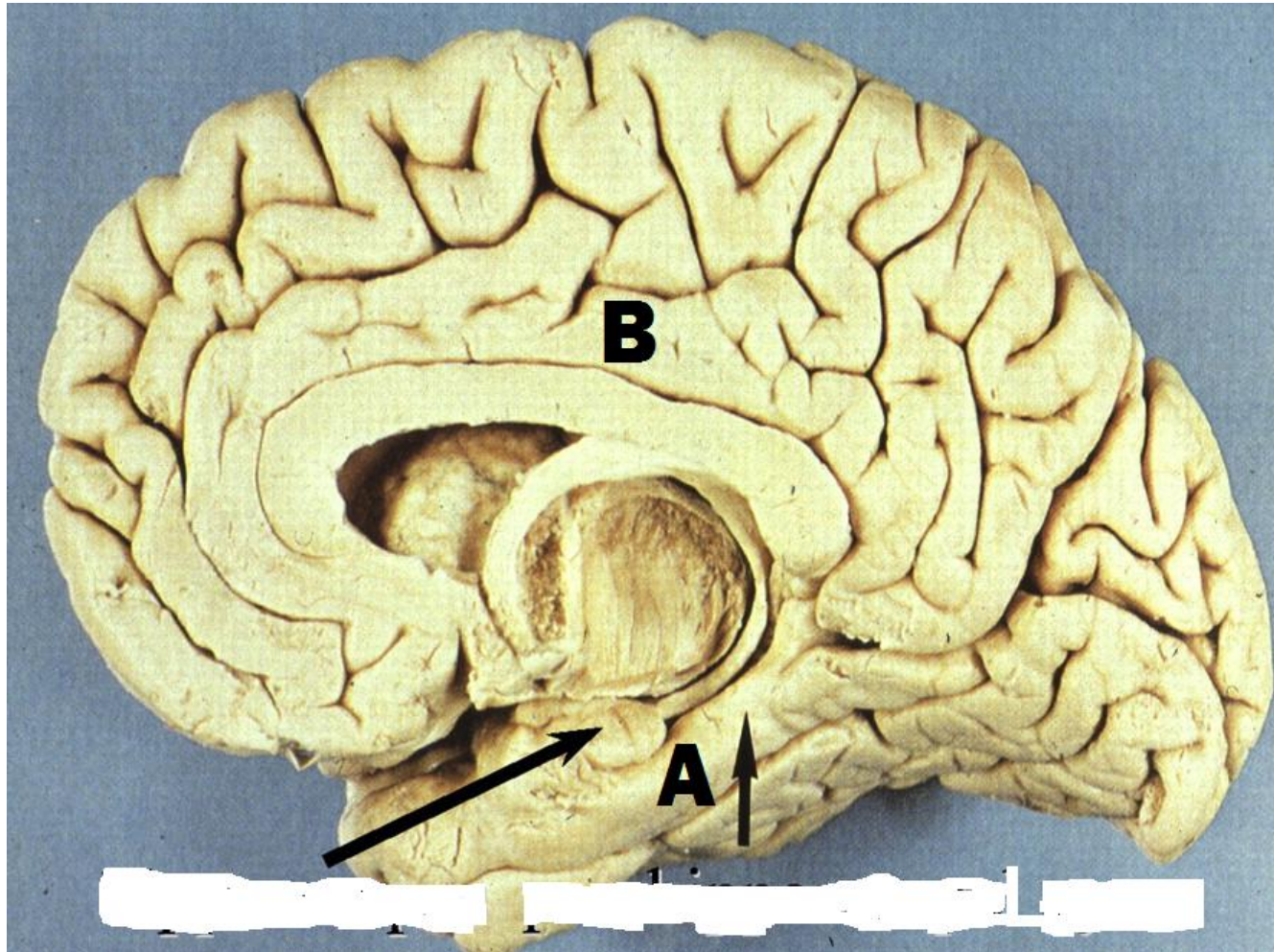
15



(a) Give four clinical features associated with occlusion of A at the position pointed

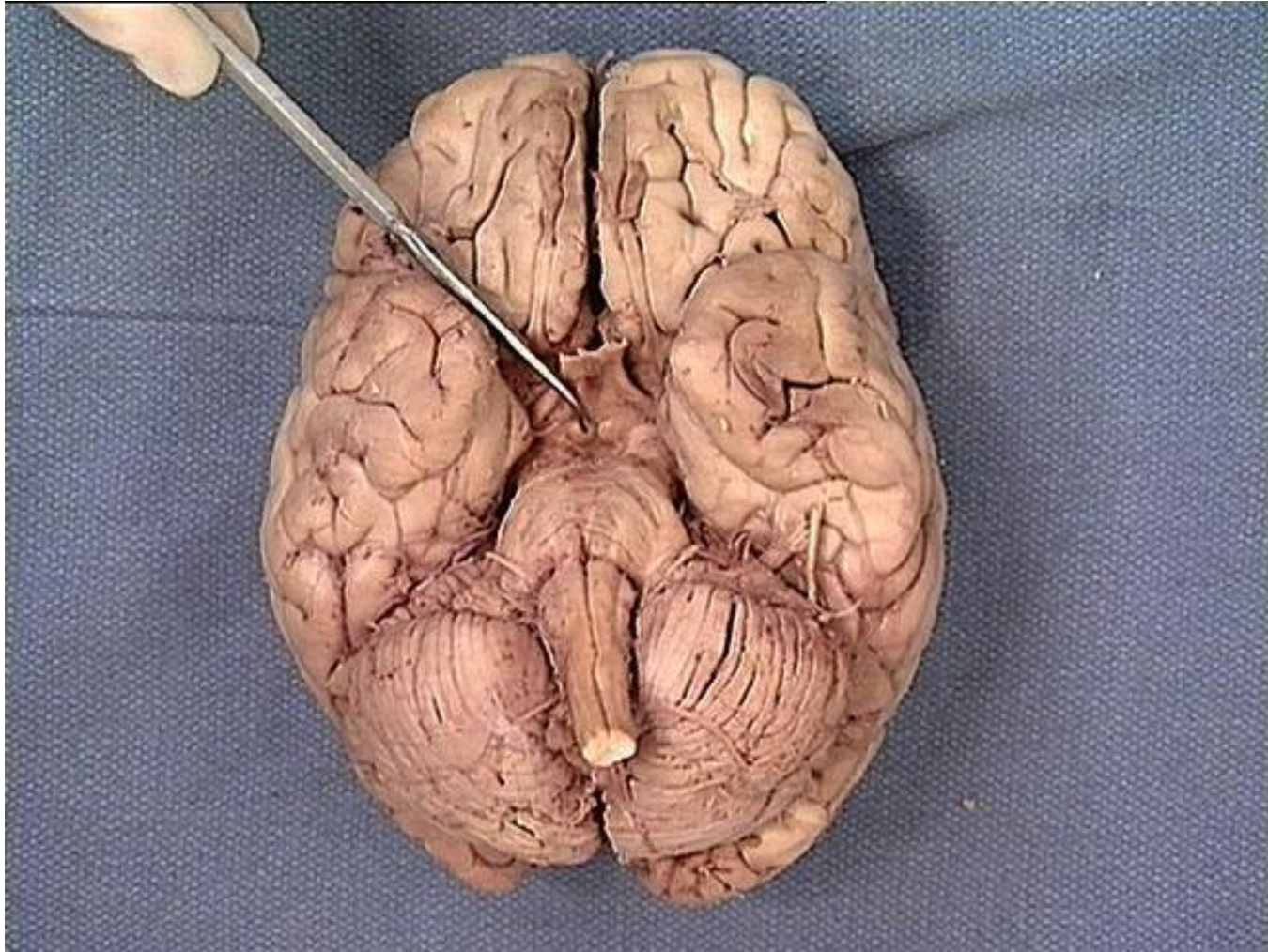
(b) Name the nuclei of vagus nerve

16



- (a) Identify the parts labeled A and B
- (b) Name the components of hippocampal formation

17



(a) Name two efferents from the part pointed

(b) State the functions of the brain stem reticular formation

THE END