

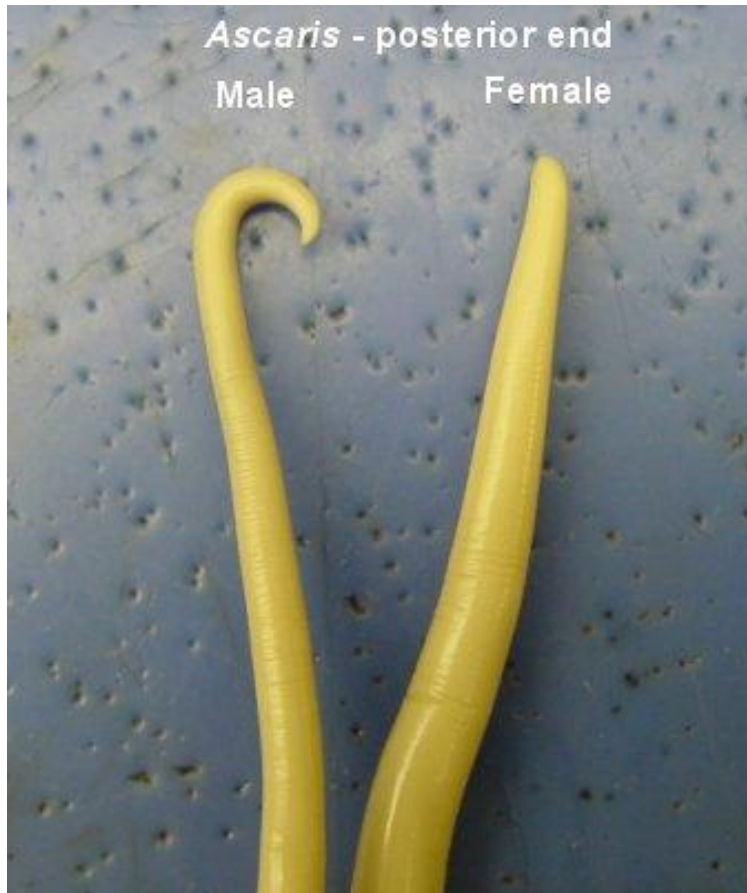
Parasitology Spots

Round Worms

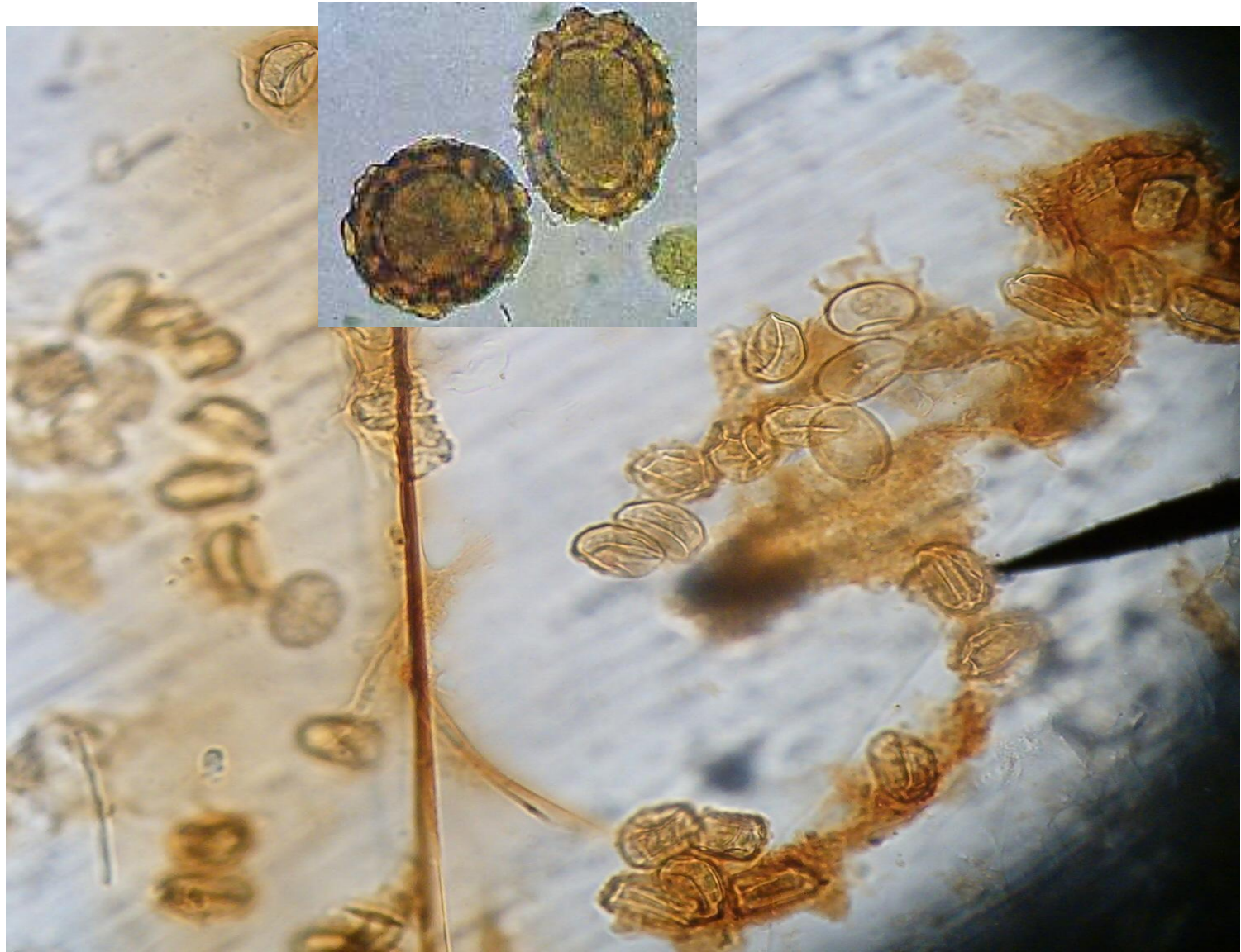
Phylum: Nematelminthes

Class: Nematoda

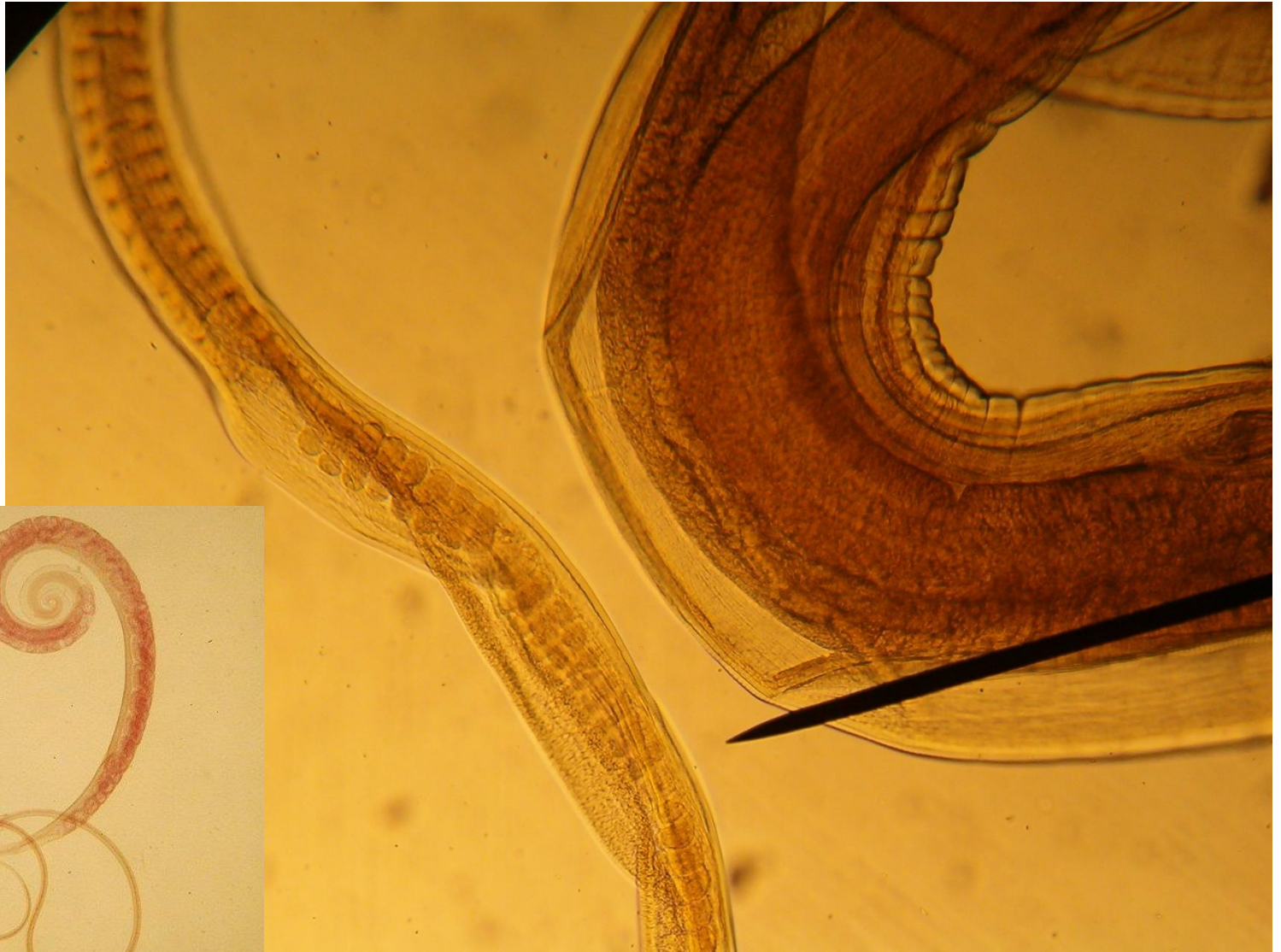
Ascaris lumbricoides Adult worm



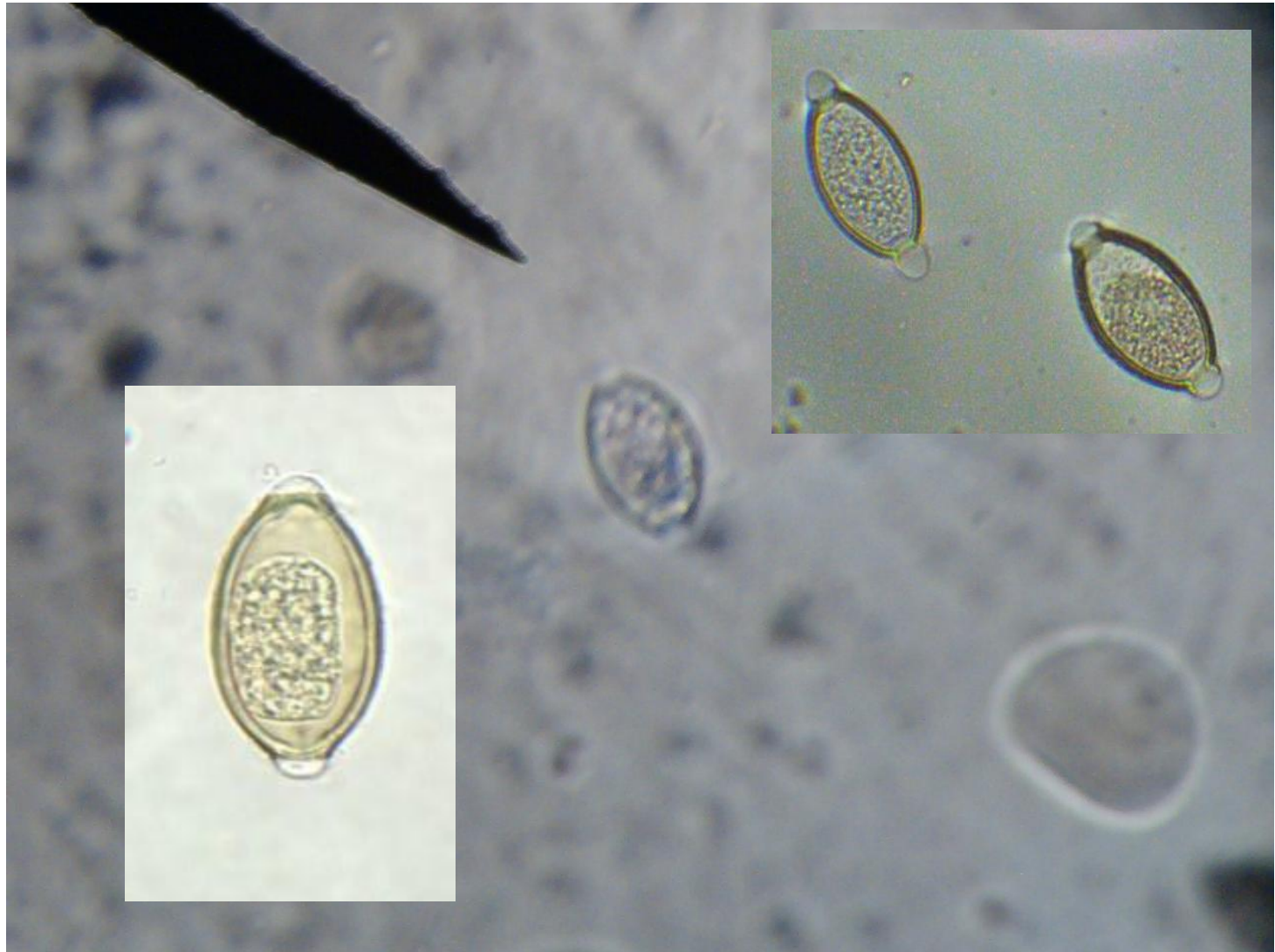
Egg of *Ascaris lumbricoides*



Trichuris trichiura Adult worm



Egg of *Trichuris trichiura*



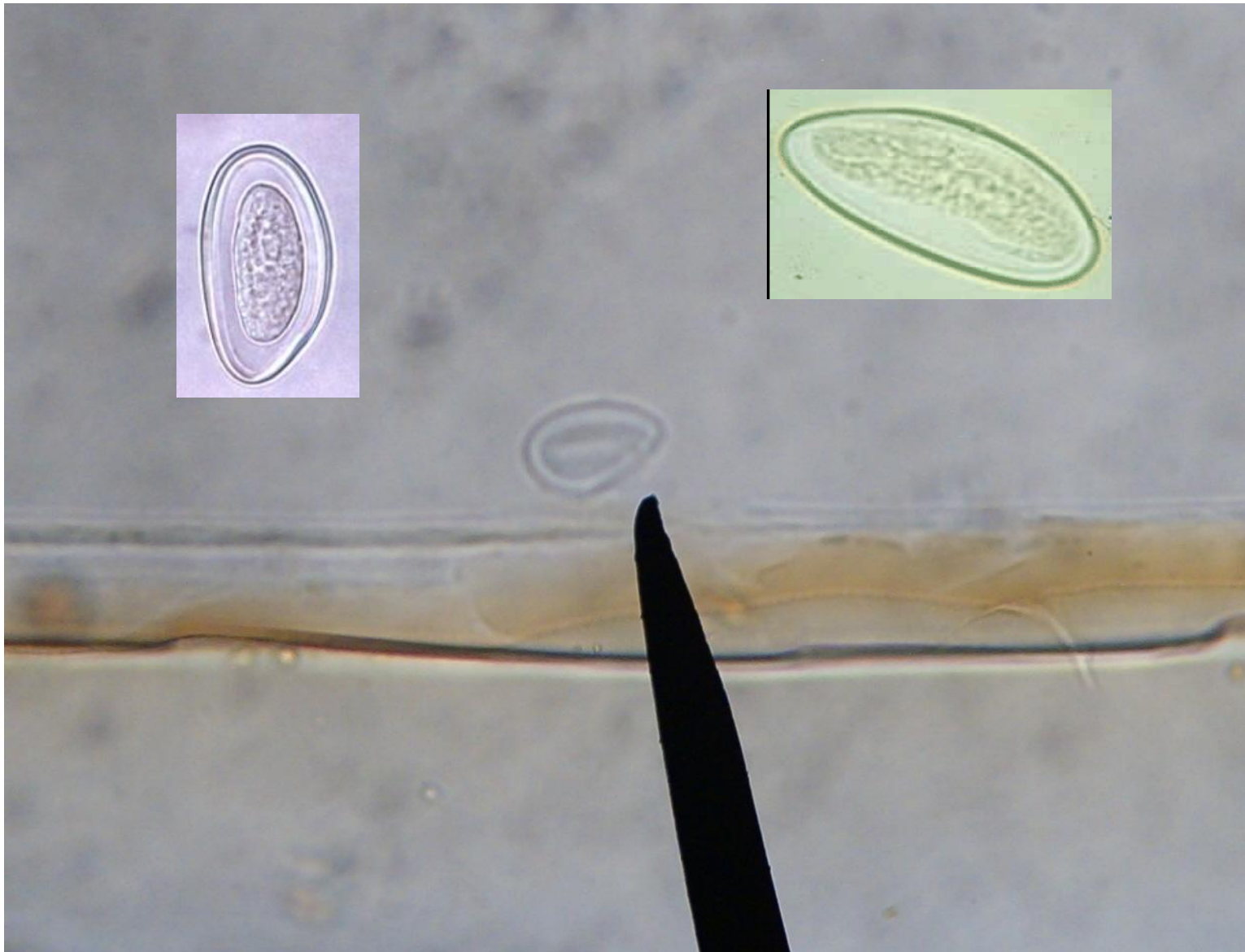
Male worm of Enterobius Vermicularis



Female worm of Enterobius Vermicularis



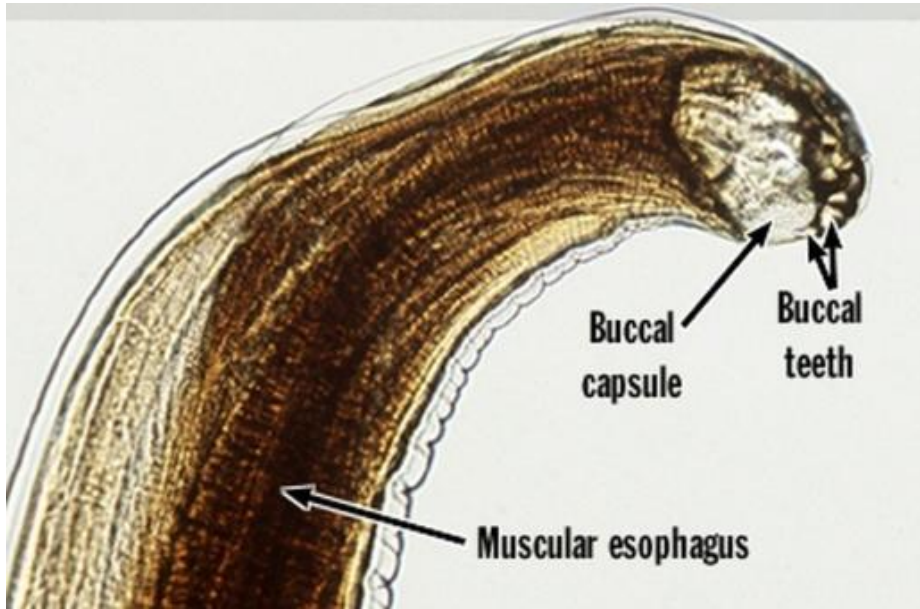
Egg of Enterobius Vermicularis



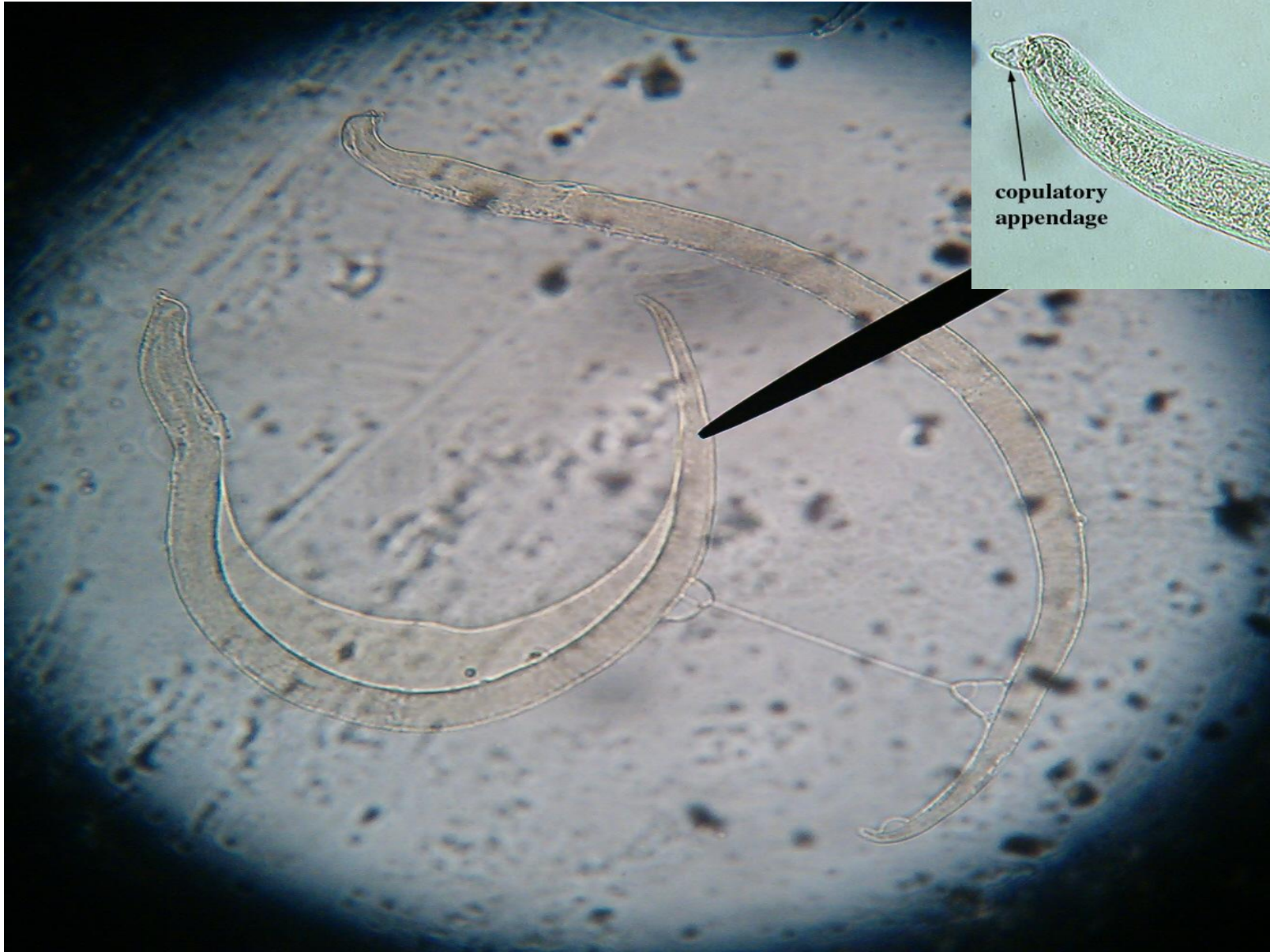
Male copulatory bursa of Ancylostoma duodenale



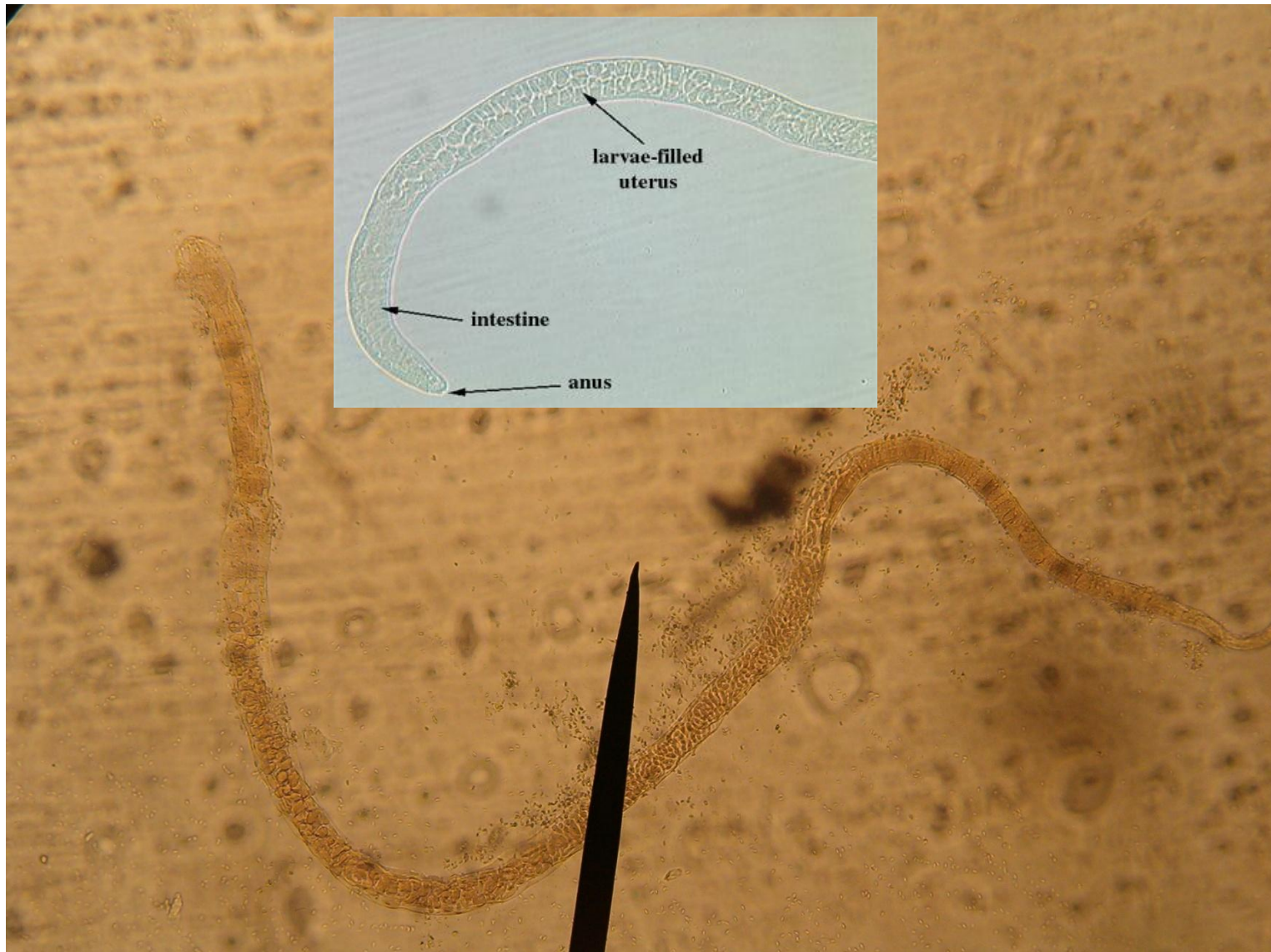
Female worm of *Ancylostoma duodenale*



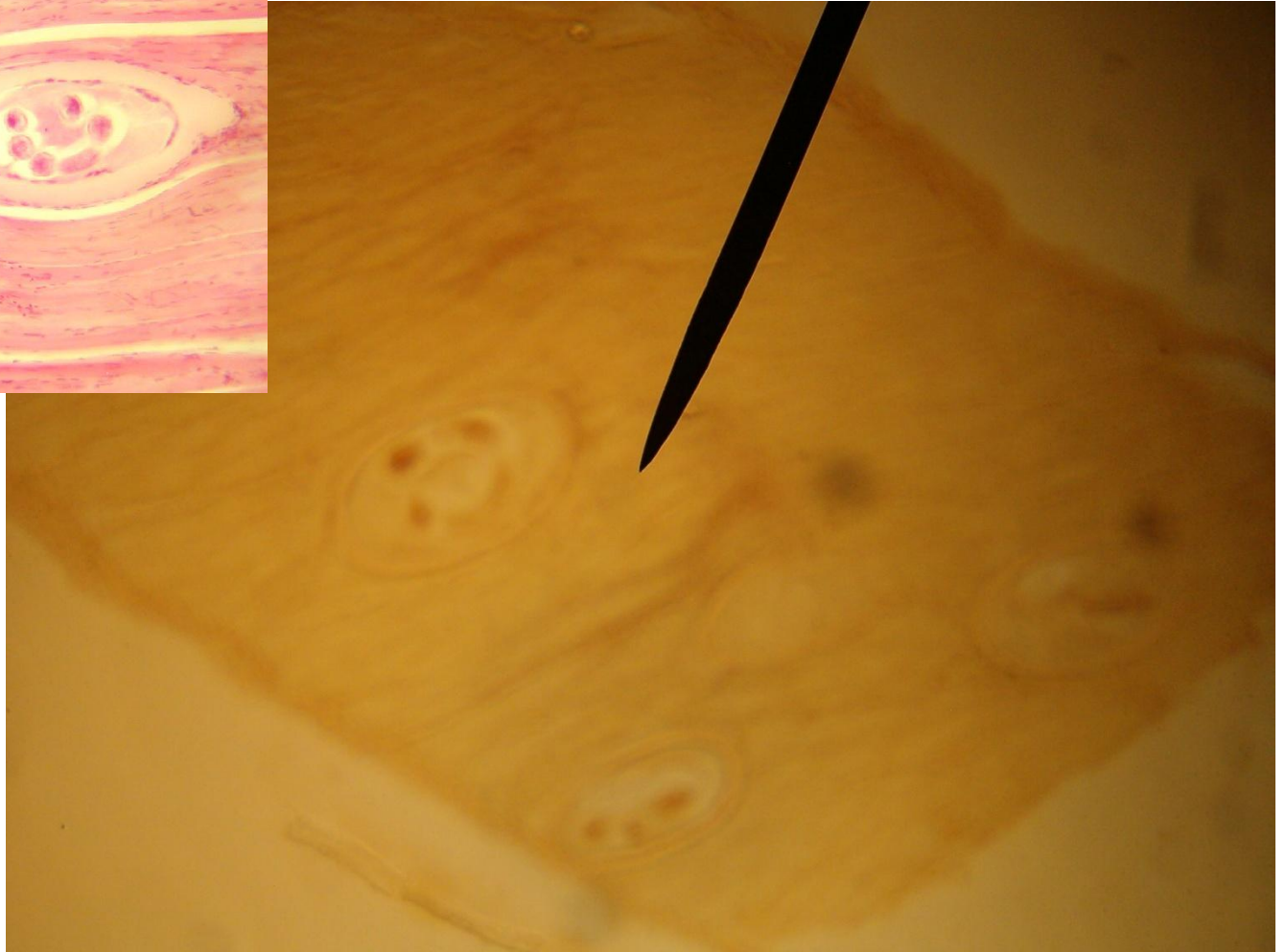
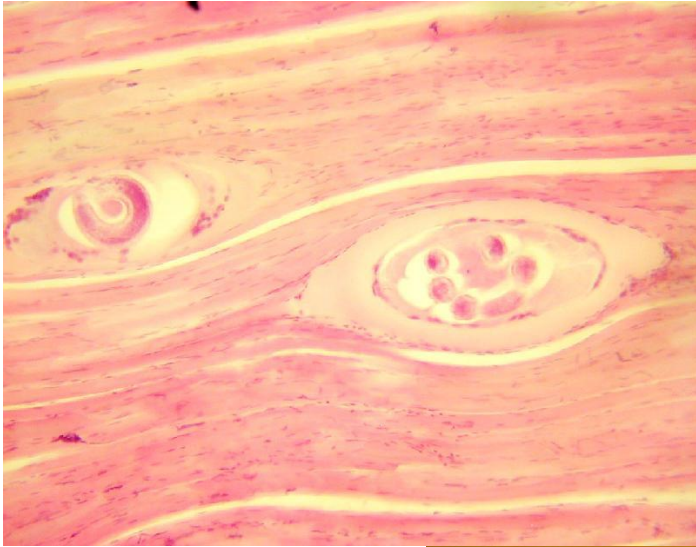
Male worm of *Trichinella spiralis*



Female worm of Trichinella spiralis



Encysted Larvae of Trichinella spiralis



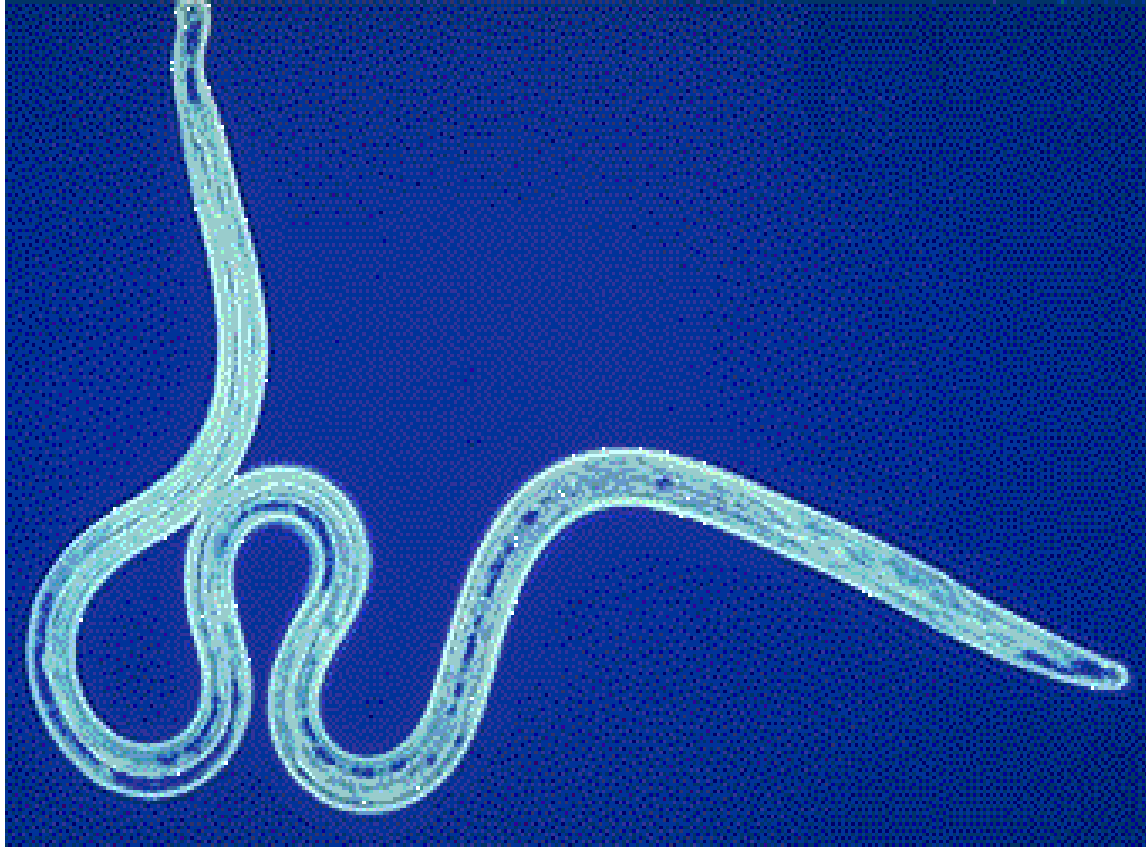
Adult worm of Wuchereria bancrofti



Microfilaria of Wuchereria bancrofti



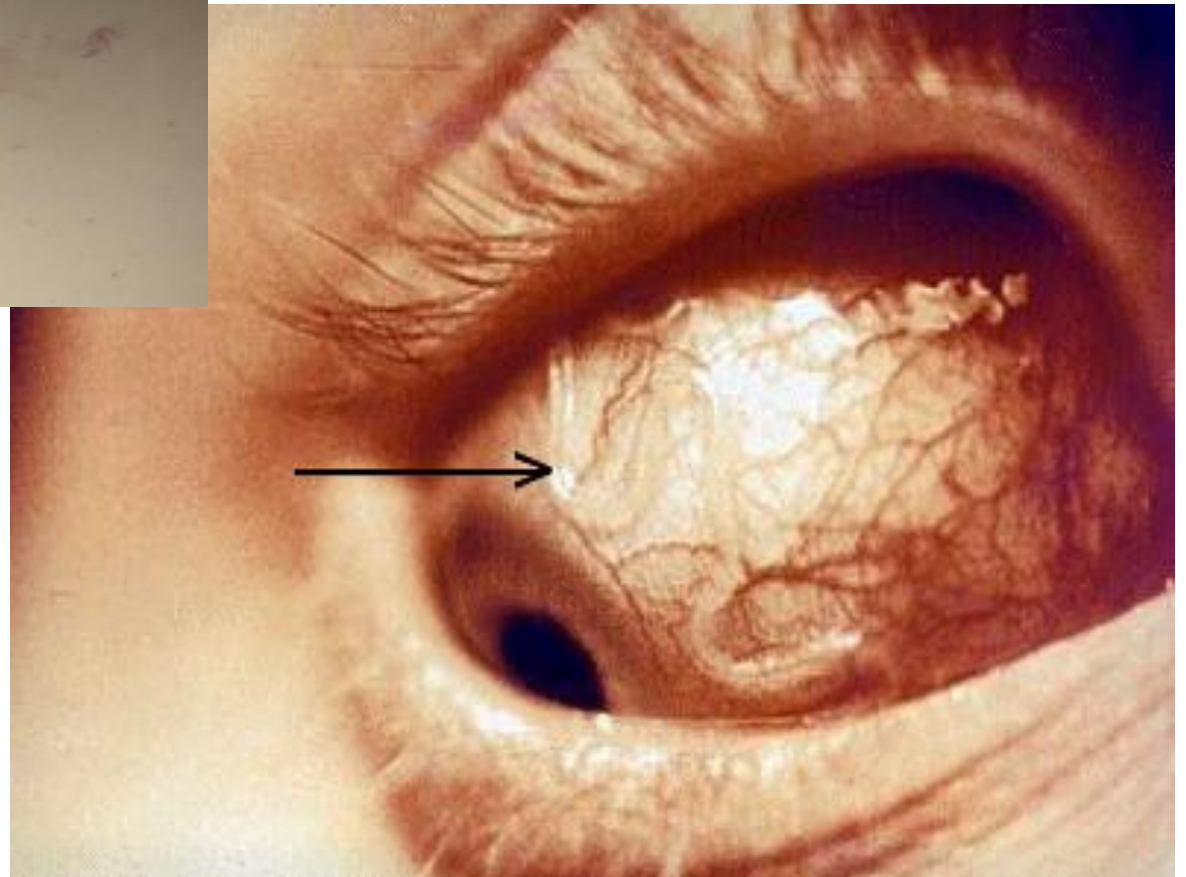
Adult worm of Brugia malayi



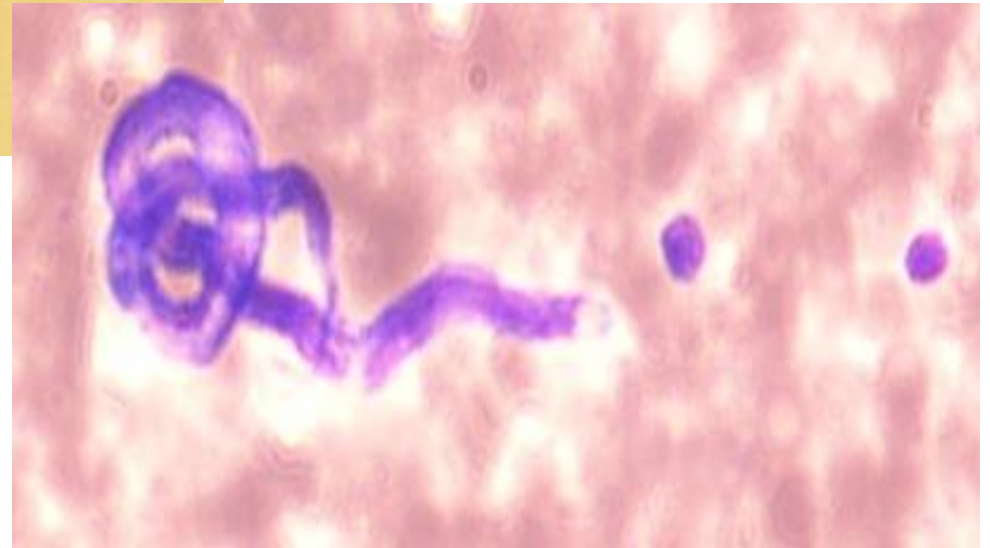
Microfilaria of Brugia malayi



Adult worm of Loa loa



Microfilaria of Loa loa



Adult worm of Onchocerca volvulus



Microfilaria of Onchocerca volvulus



Adult worm of Dracunculus medinensis



Tape Worms

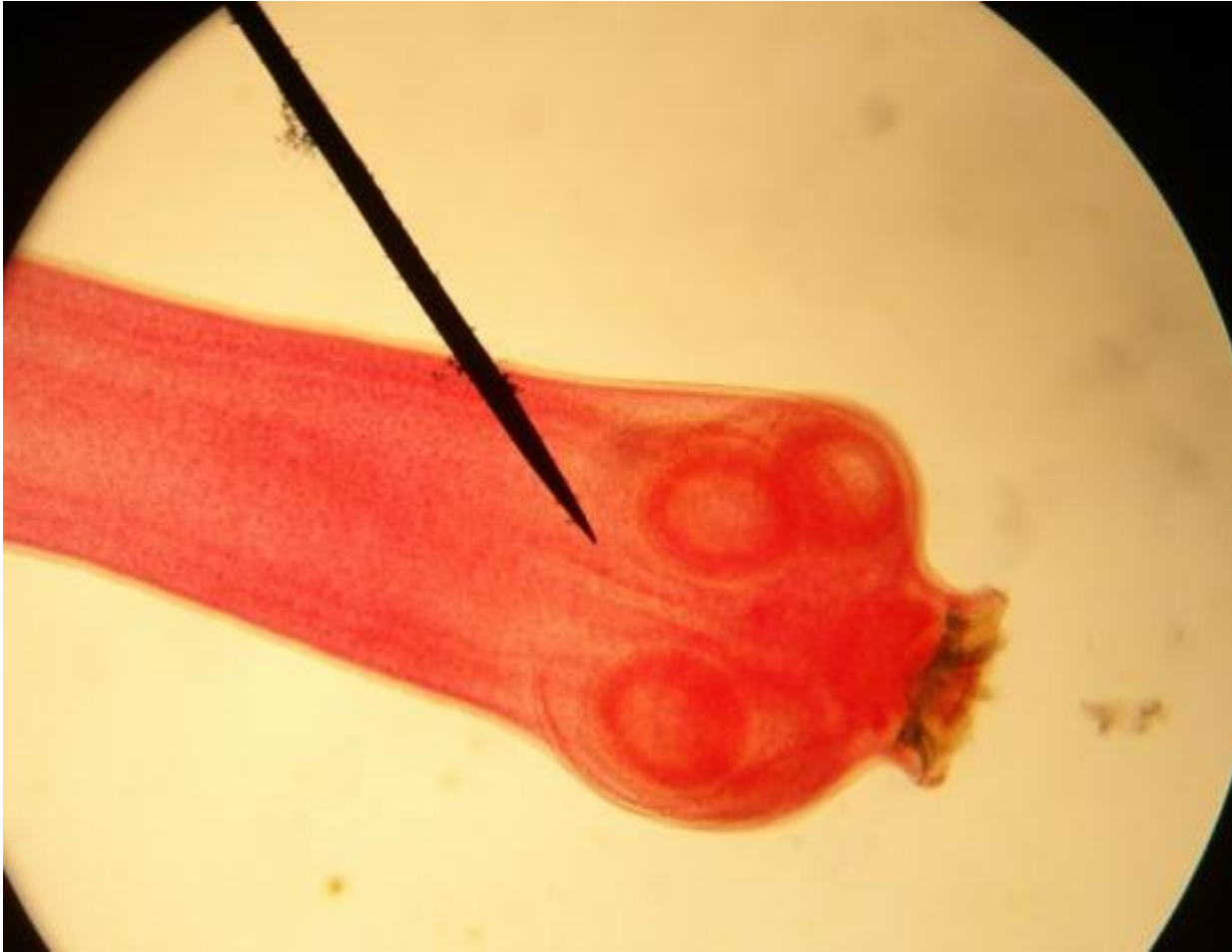
Phylum: Platyhelminthes

Class: Cestoda

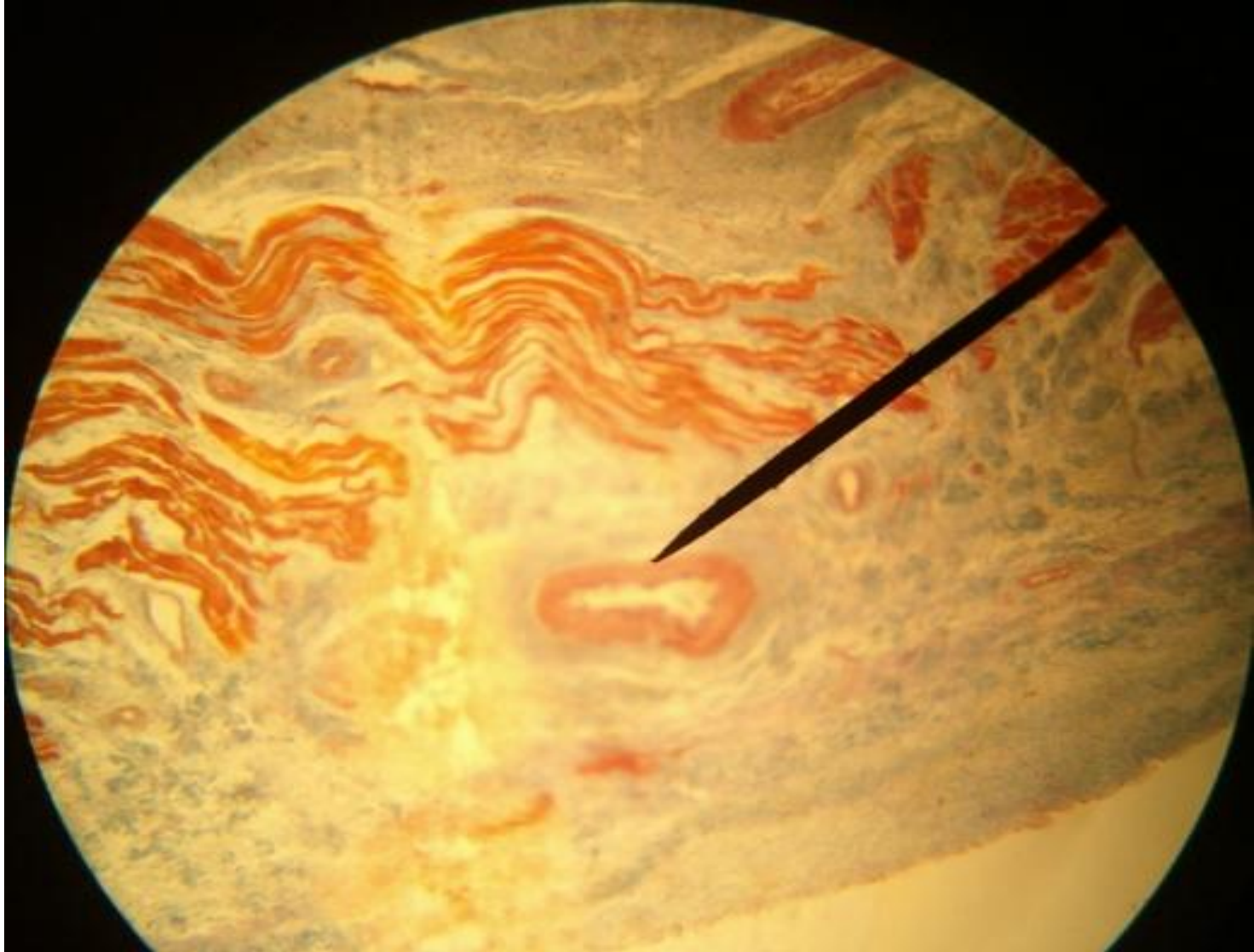
Worm of Taenia saginata and T.solium



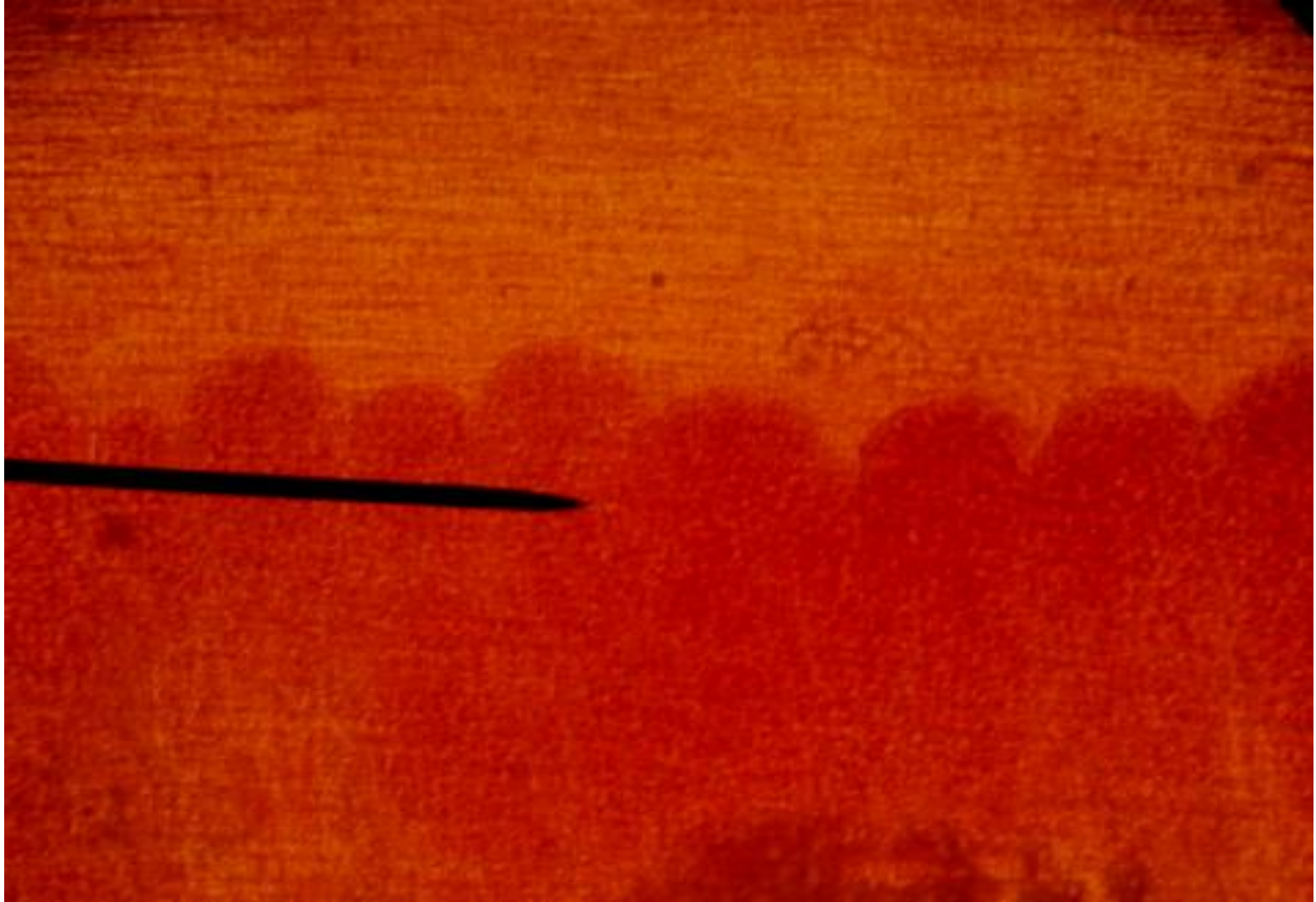
Scolex of T.solium



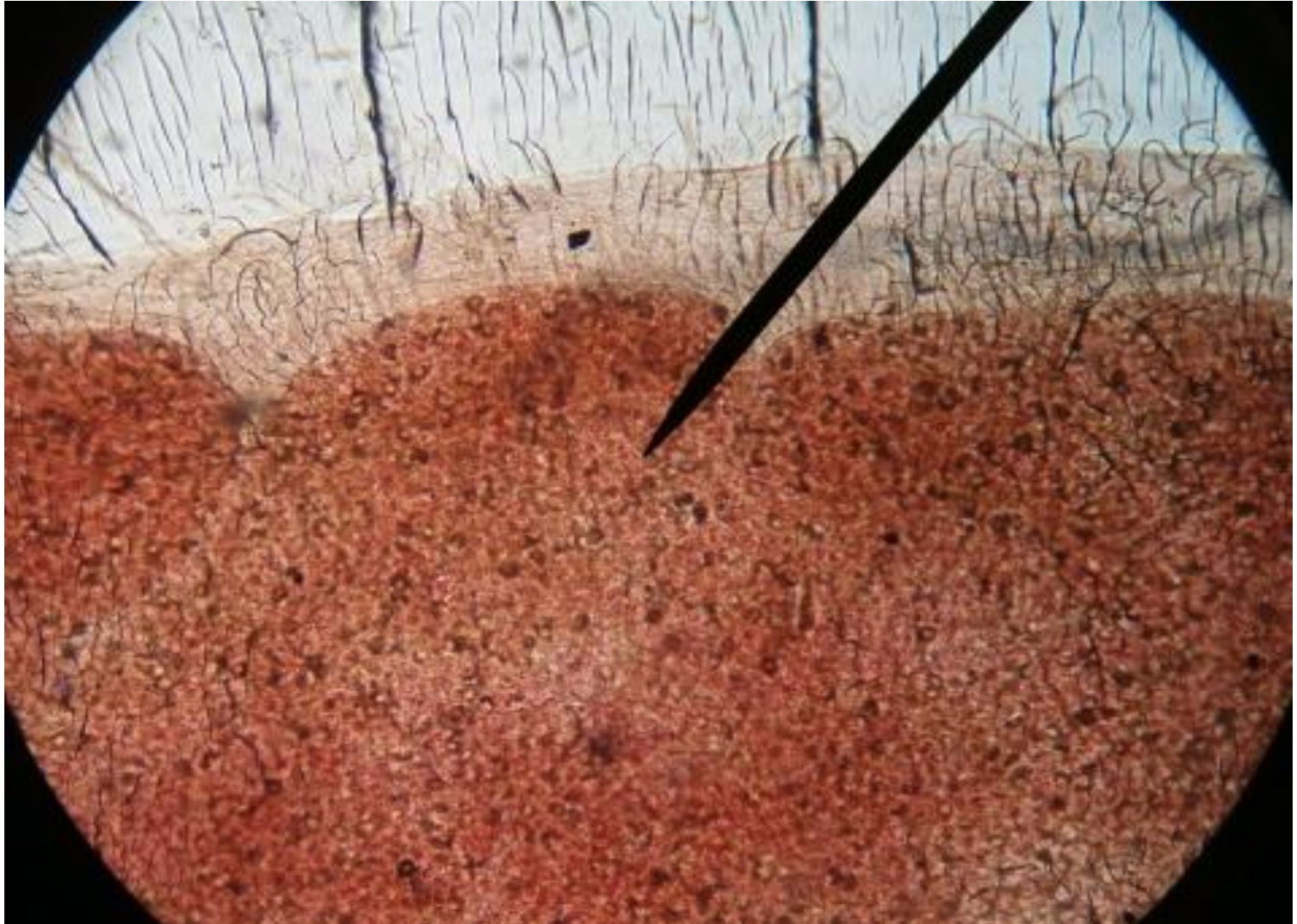
Cysticercus bovis of *T. saginata*



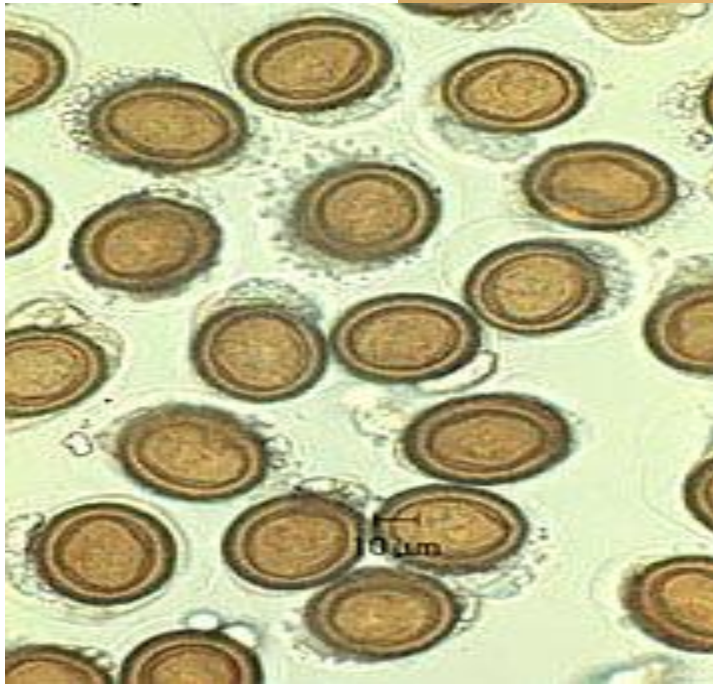
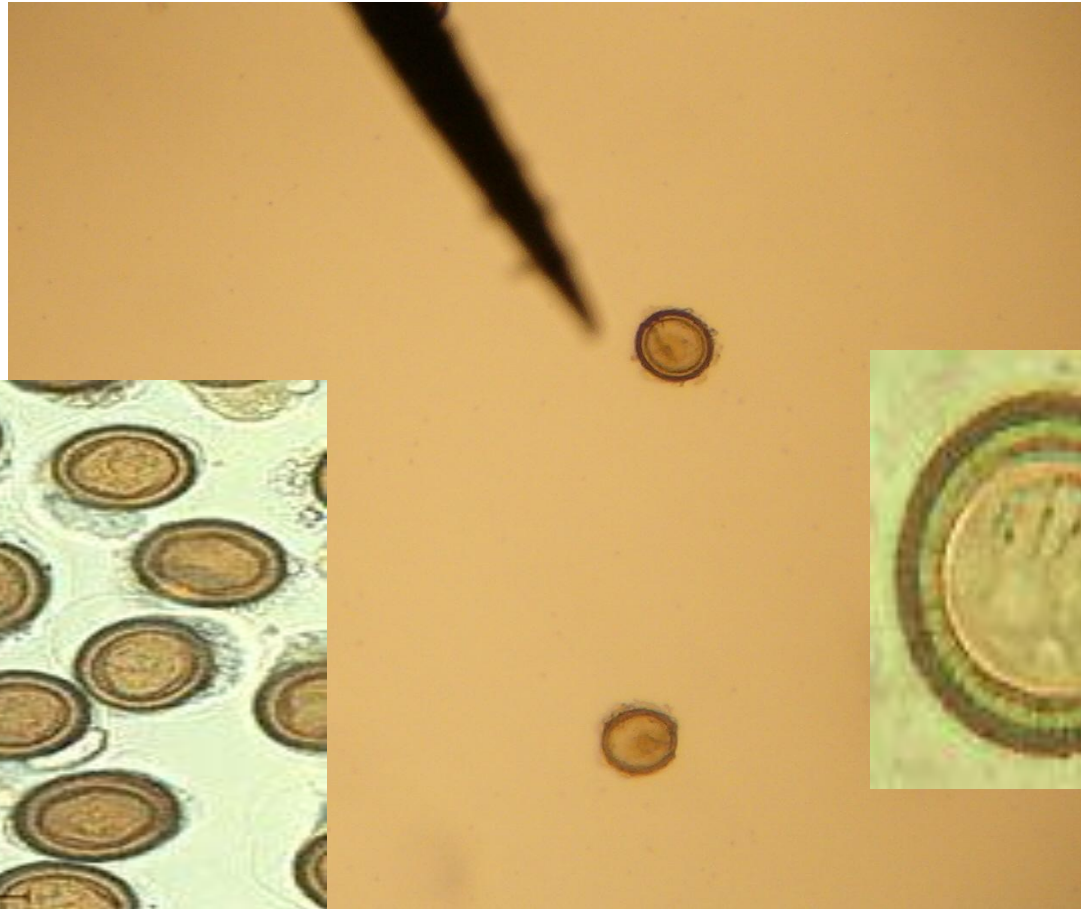
Gravid segment of *T. saginata*



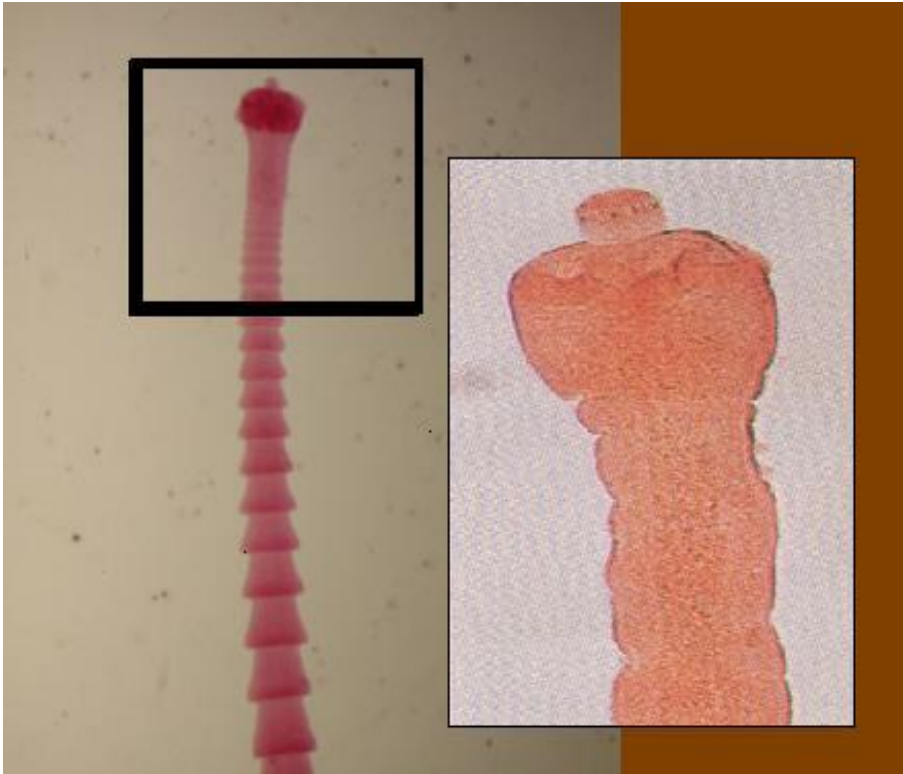
Gravid segment of *T. solium*



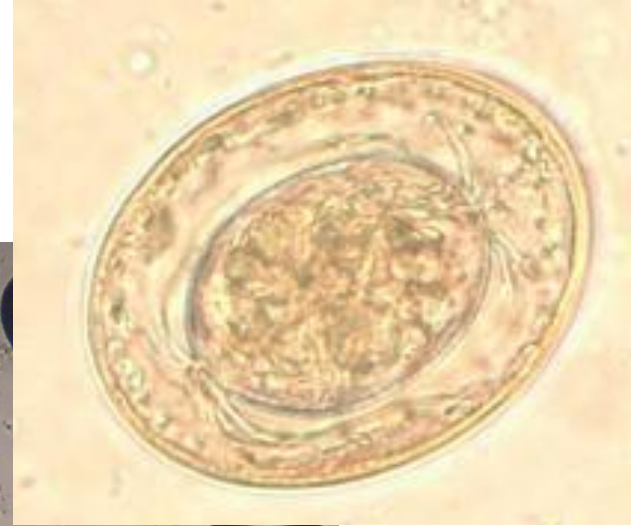
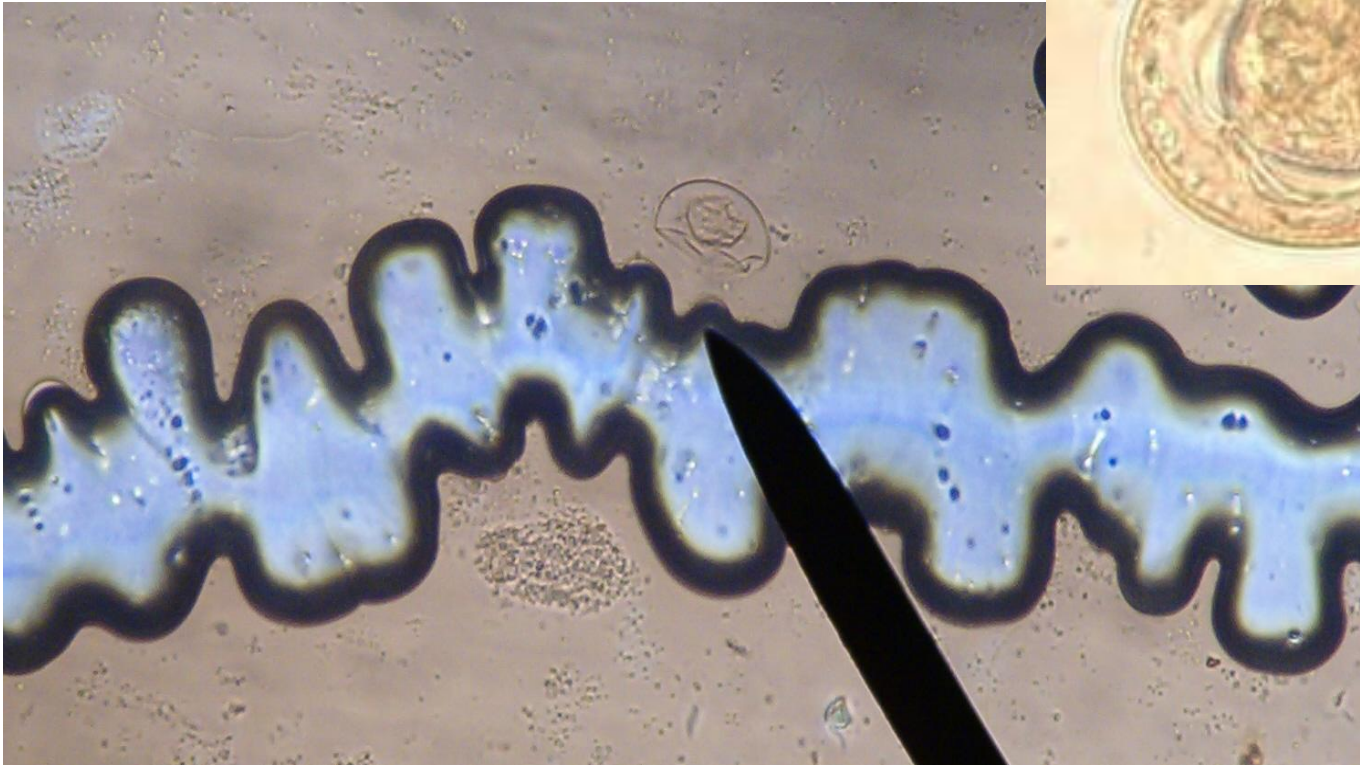
Egg of *Taenia*



Worm of *Hypmenolepis nana*



Egg of Hypmenolepis nana



Worm of Hymenolepis diminuta



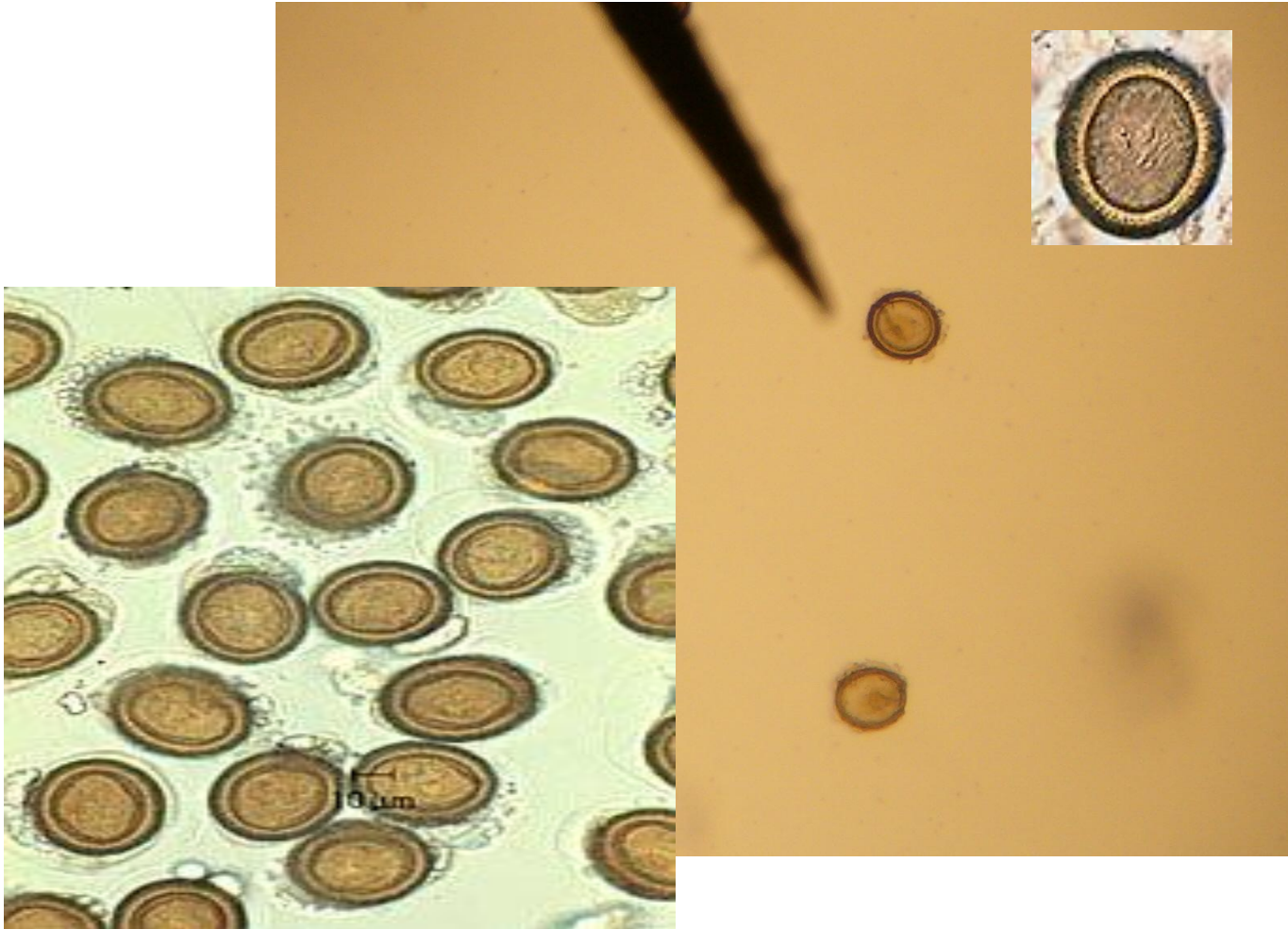
Egg of Hymenolepis diminuta



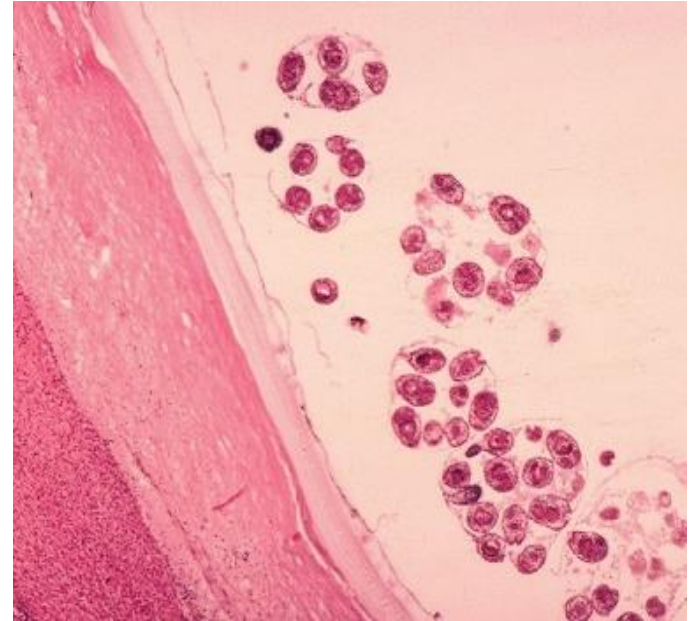
Worm of *Echinococcus granulosus*



Egg of *Echinococcus granulosus*



Hydatid cyst of *Echinococcus granulosus*

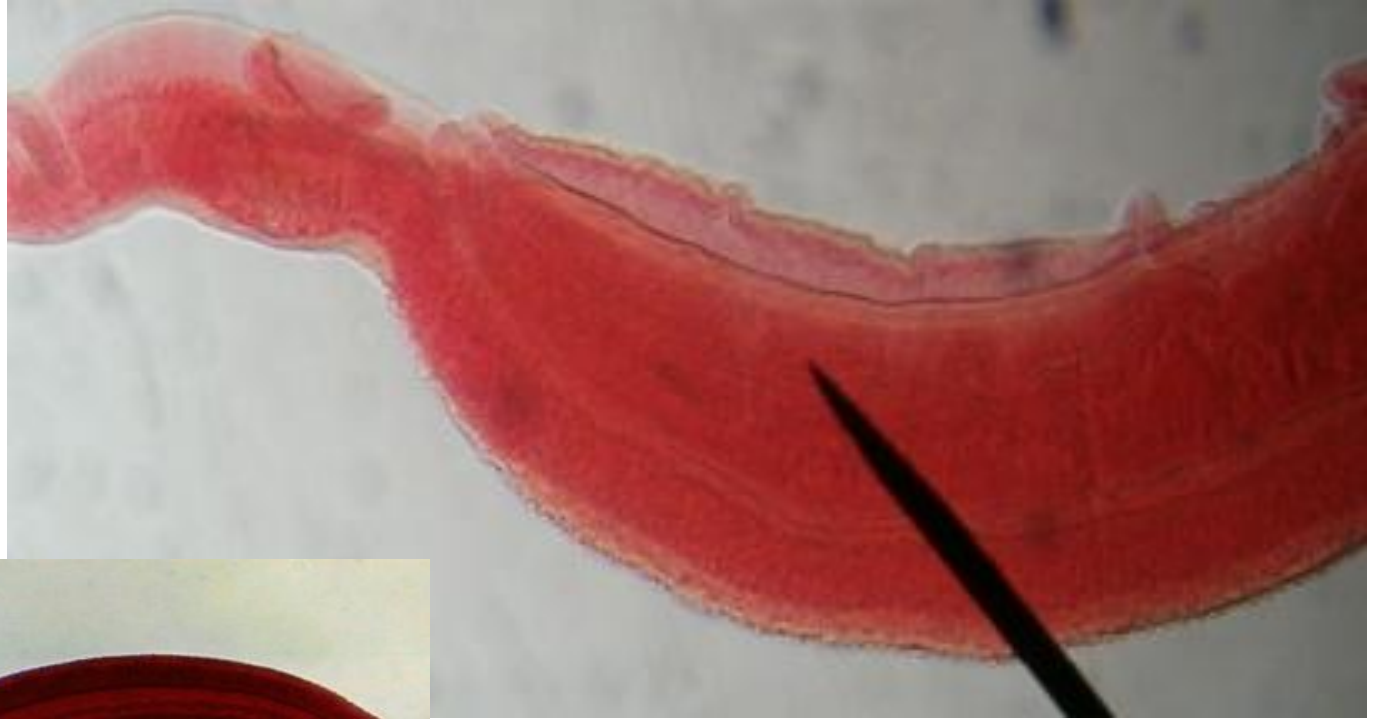


Tape Worms

Phylum: Platyhelminthes

Class: Trematoda

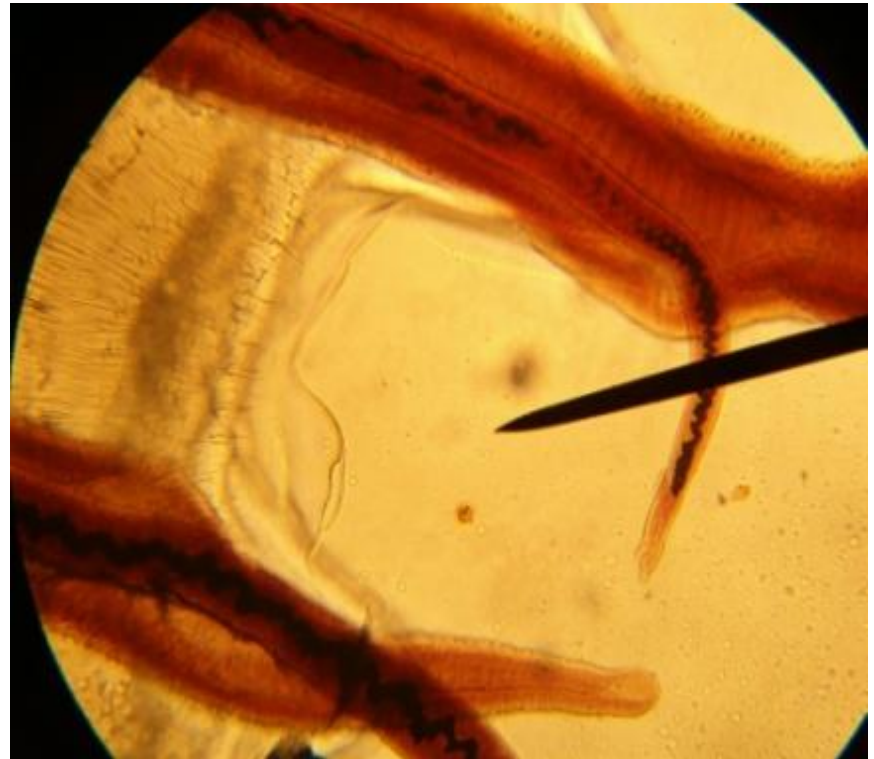
*Male worm of Schistosoma haematobium ,
Sch. Mansoni*



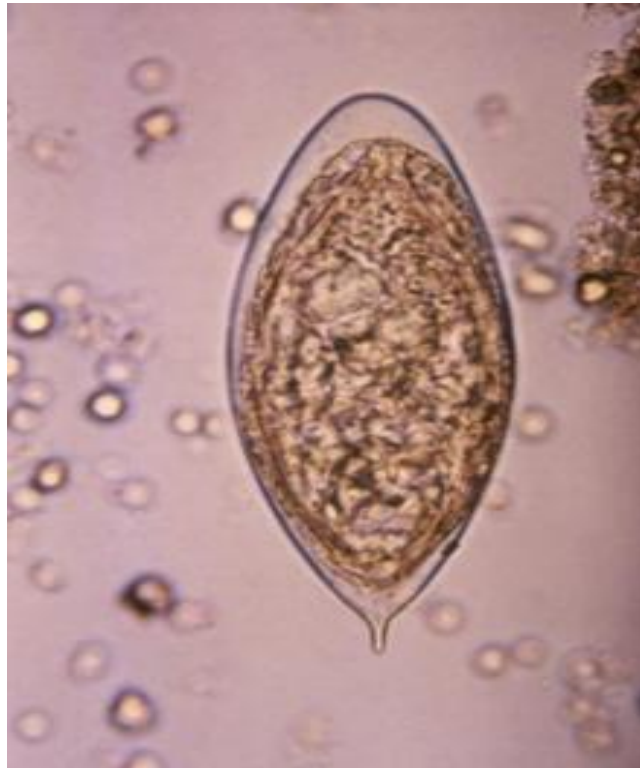
*Female worm of Schistosoma haematobium ,
Sch. Mansoni*



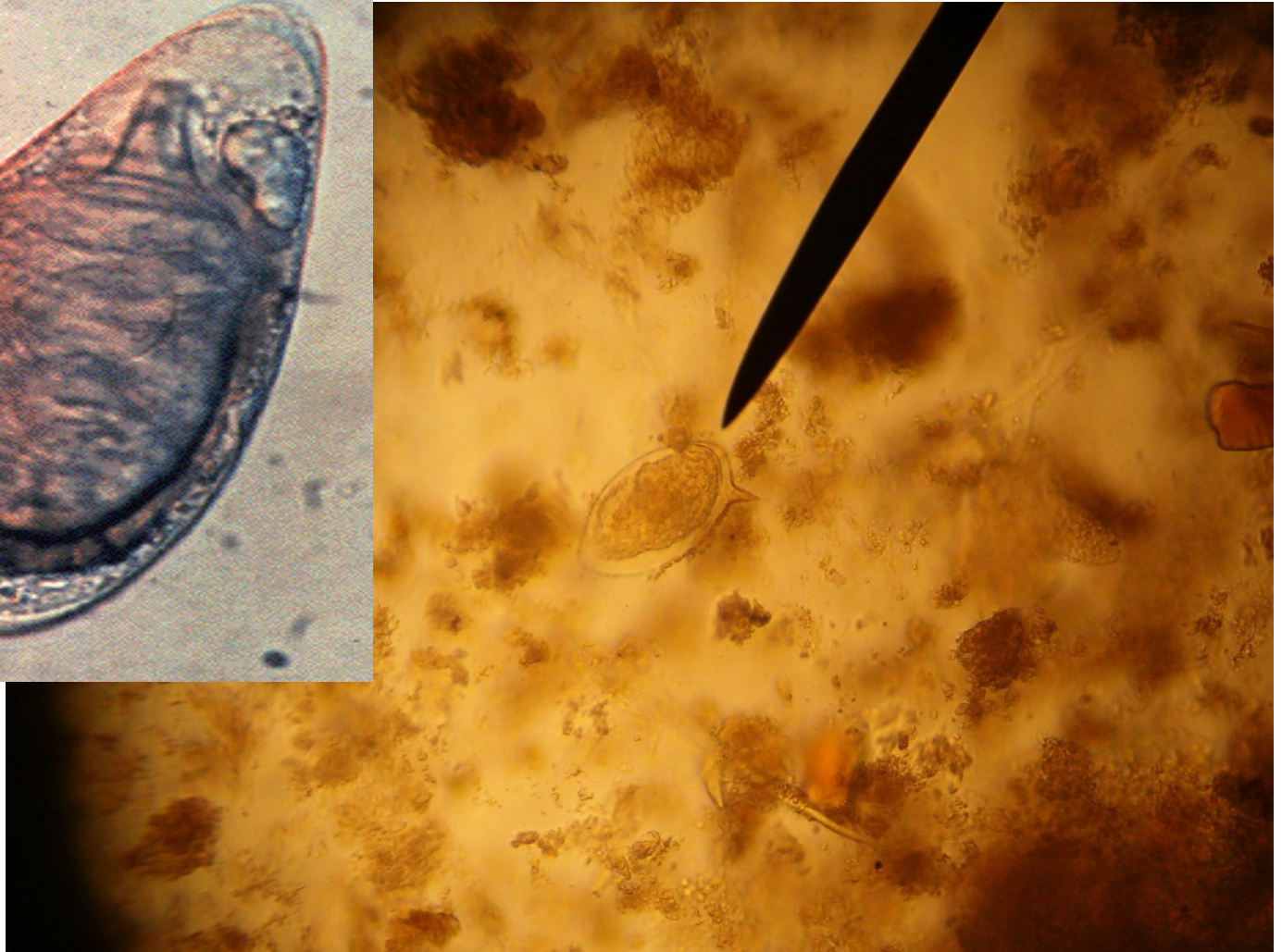
Male and female worms of Schistosoma haematobium , Sch. Mansoni



Egg of Schistosoma haematobium



Egg of *Schistosoma mansoni*



Egg of Schistosoma japonicum



Cercaria of Schistosoma



Meracidium of Schistosoma



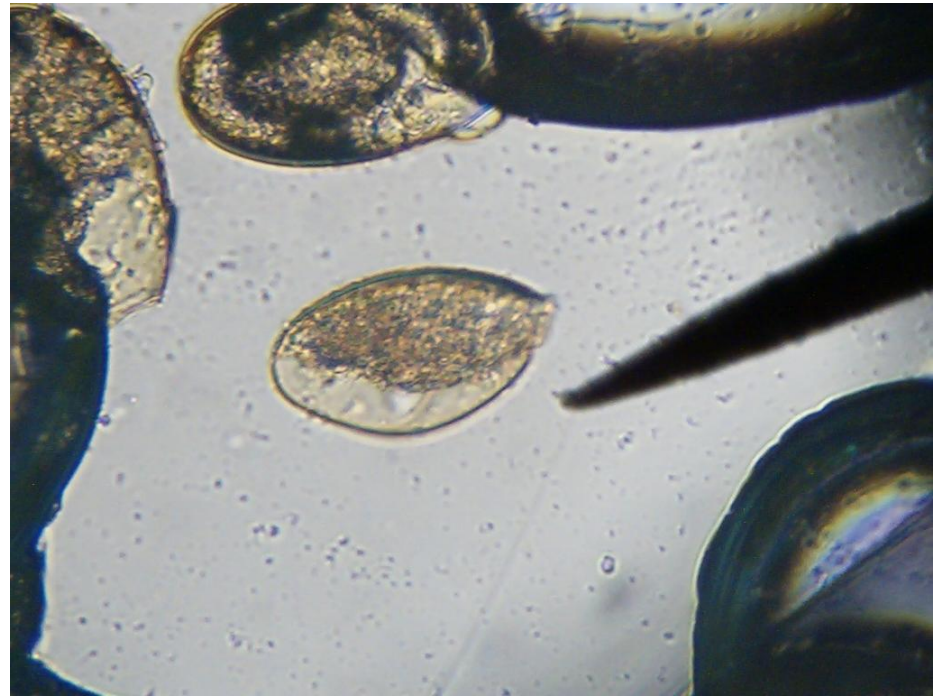
Worm of *Fasciola hepatica* and *F. gigantica*



Cercaria of Fasciola hepatica and F. gigantica



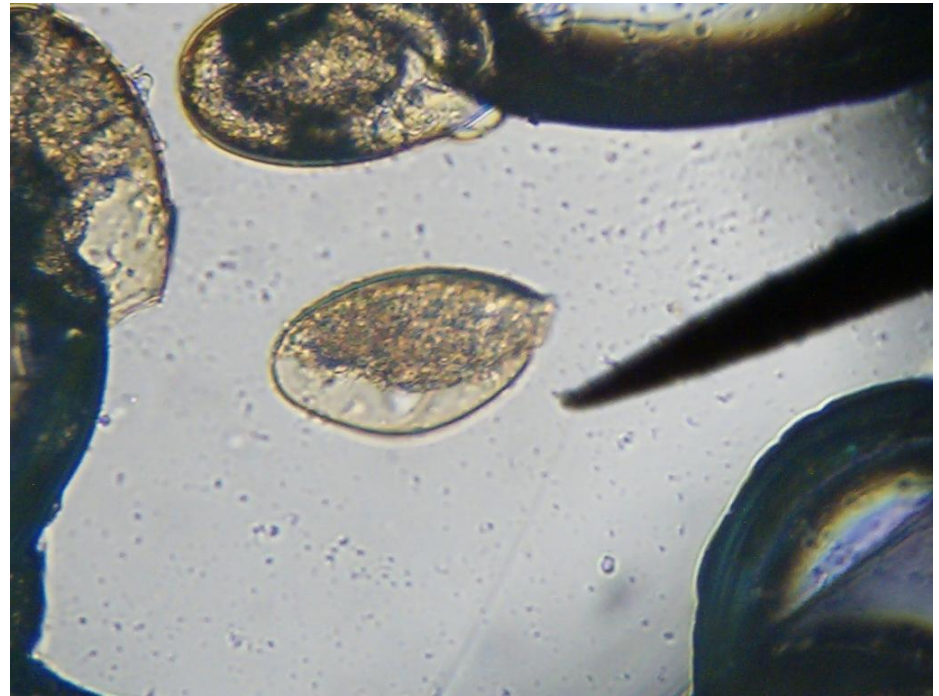
Egg of Fasciola



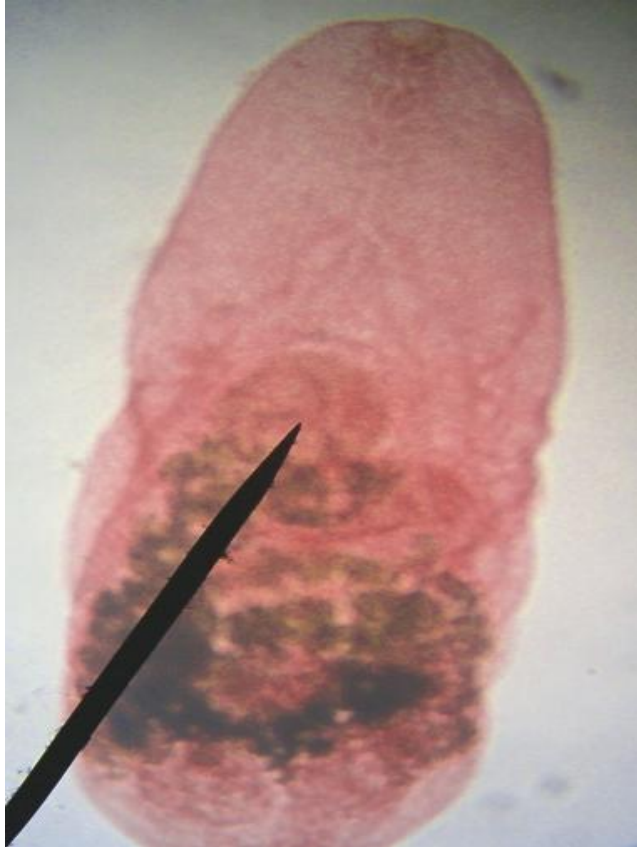
Worm of Fasciolopsis buski



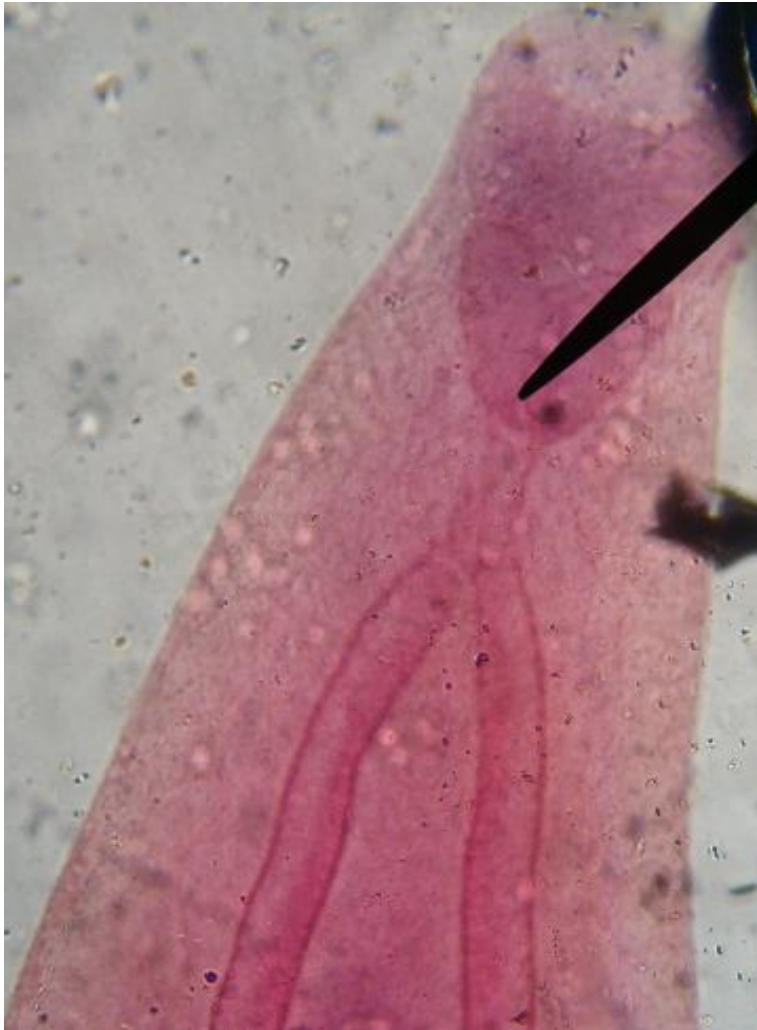
Egg of Fasciolopsis buski



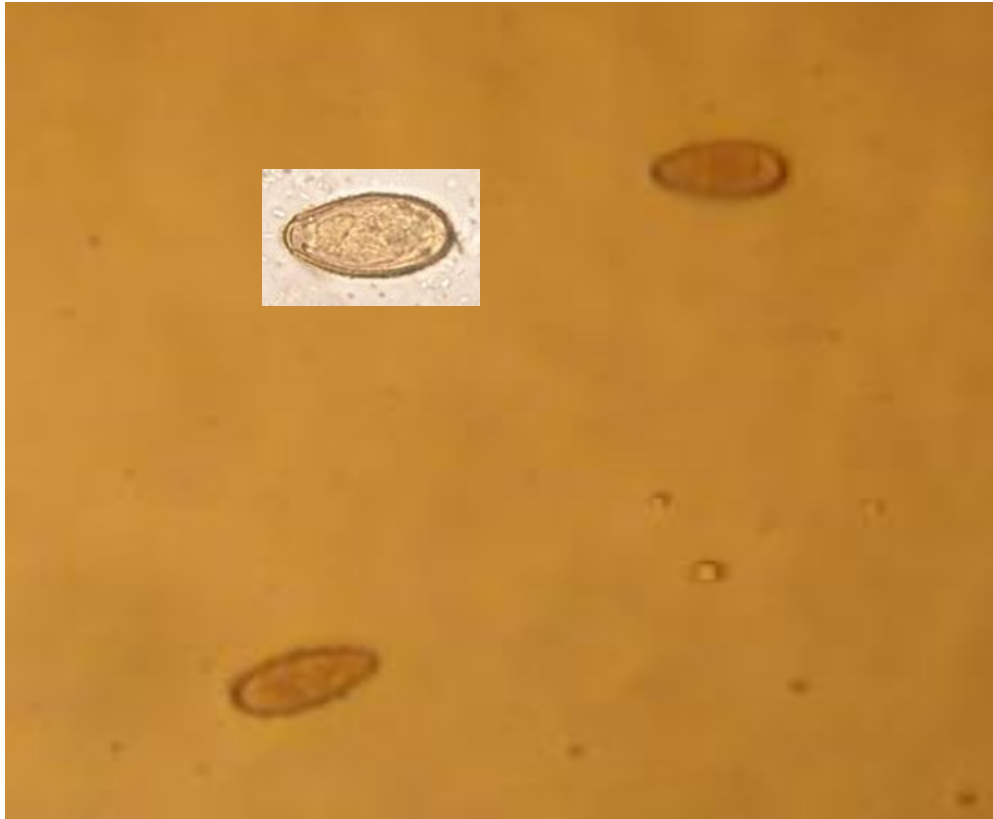
Worm of Heterophyes heterophyes



Worm of *Clonorchis sinensis*

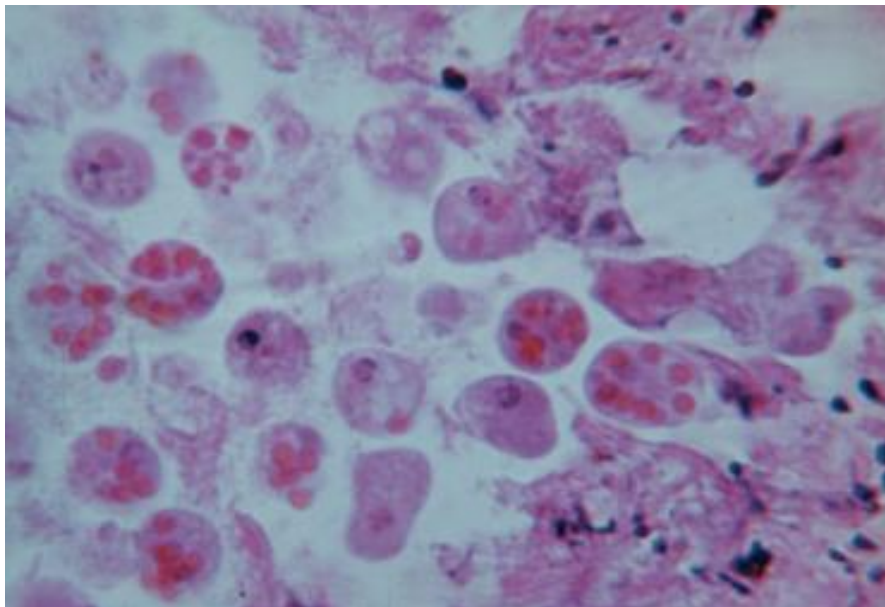
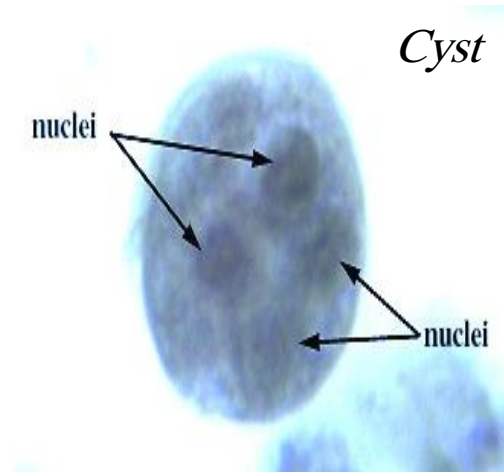
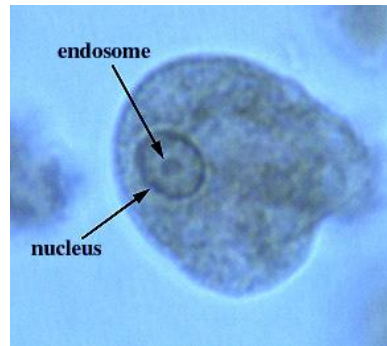


Egg of Clonorchis sinensis

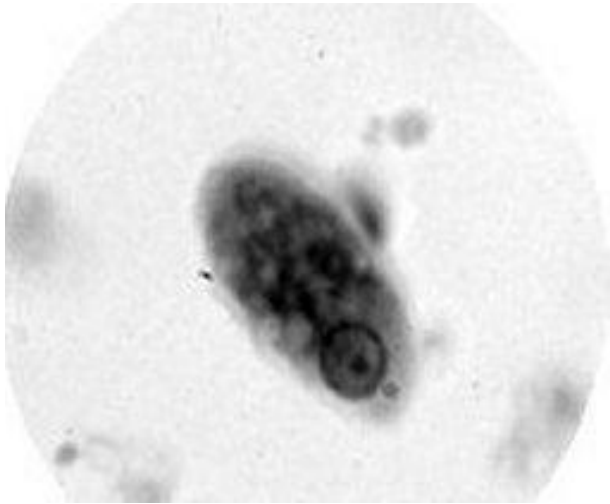


Protozoa

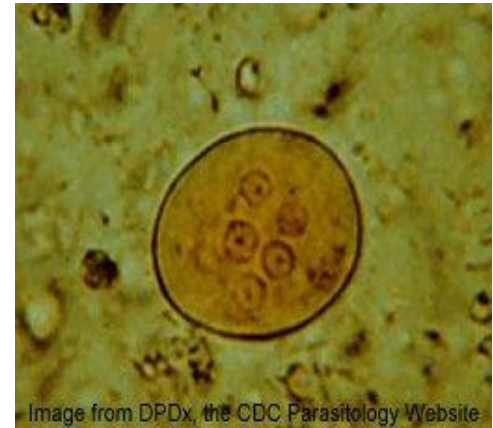
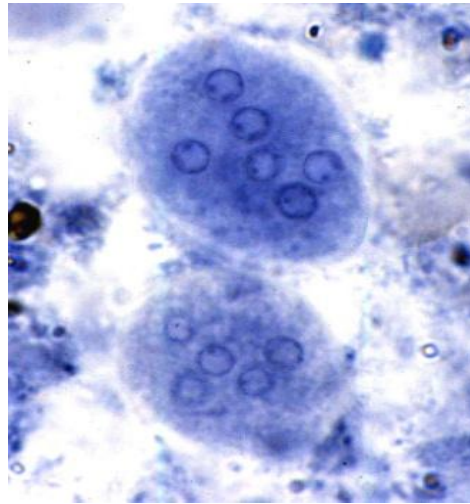
Entamoeba histolytica



Entamoeba coli

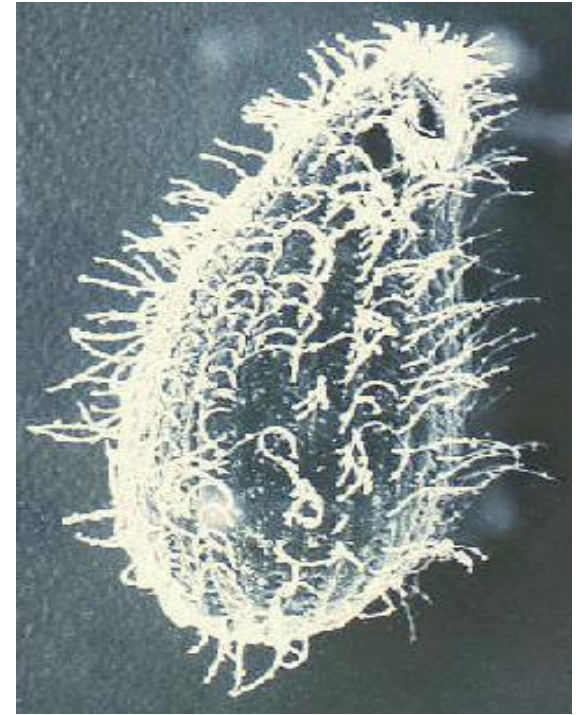
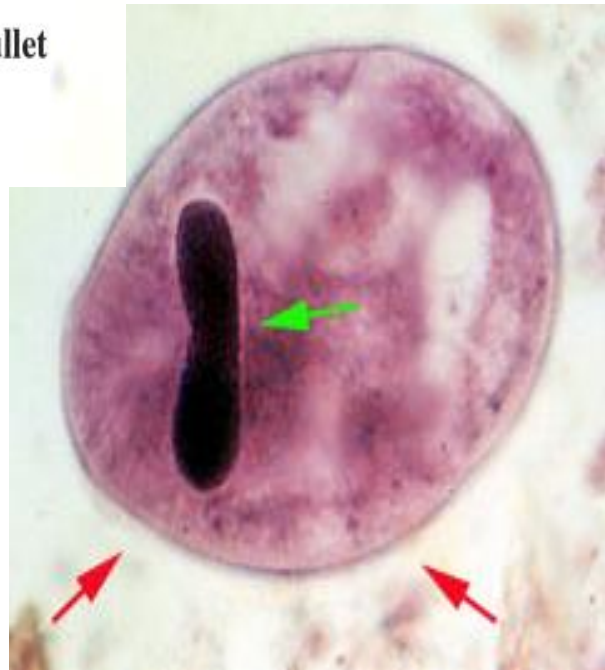
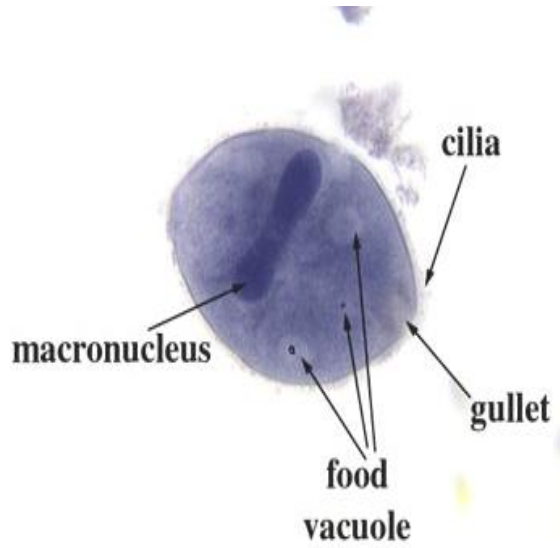


Trophozoite

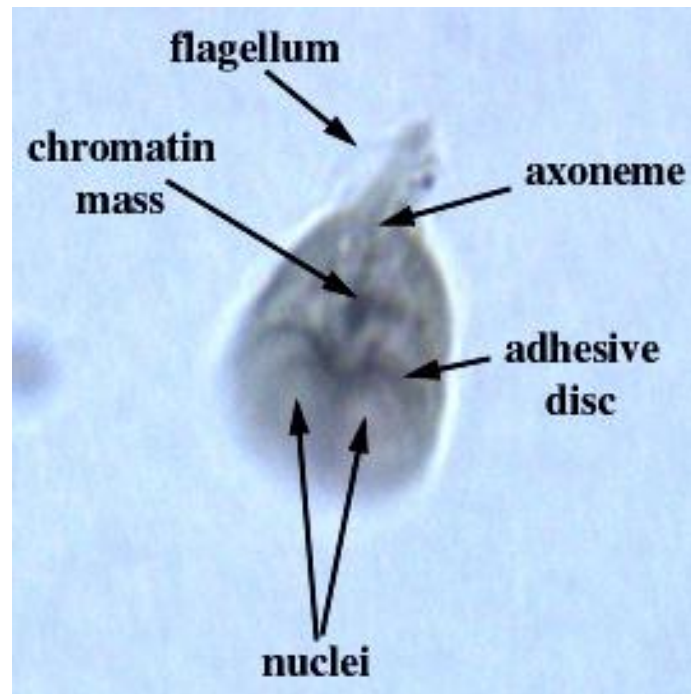
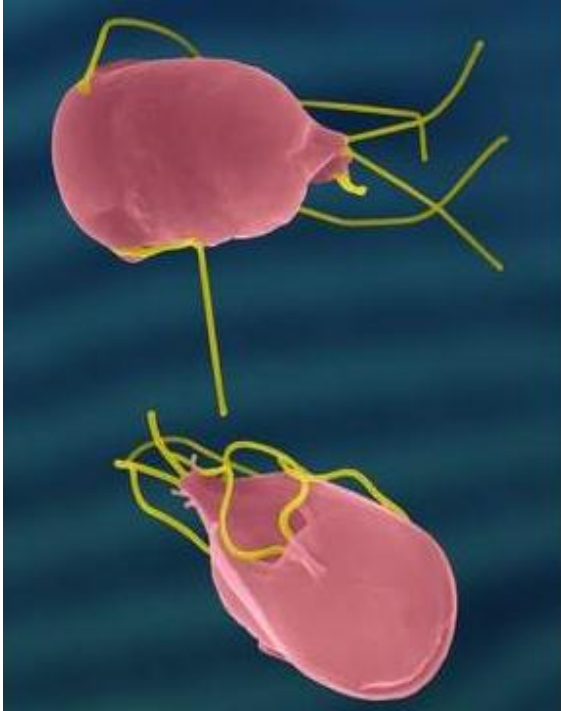


Cyst

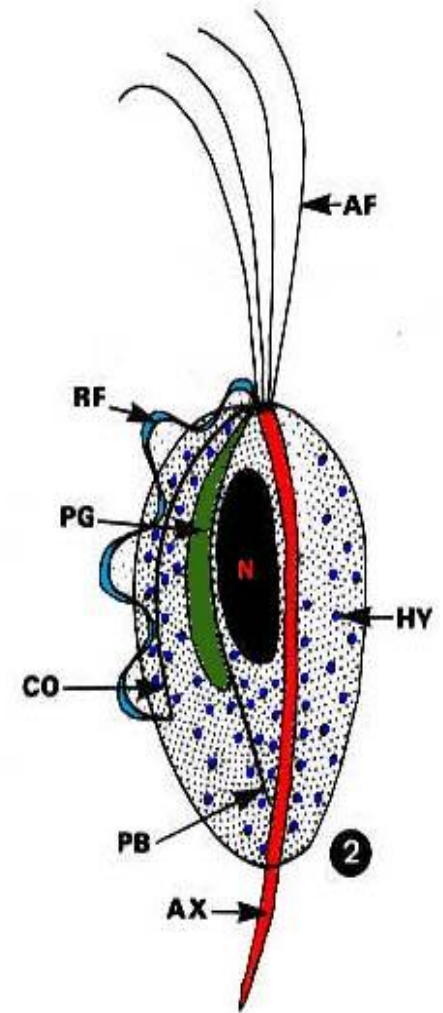
Balantidium coli



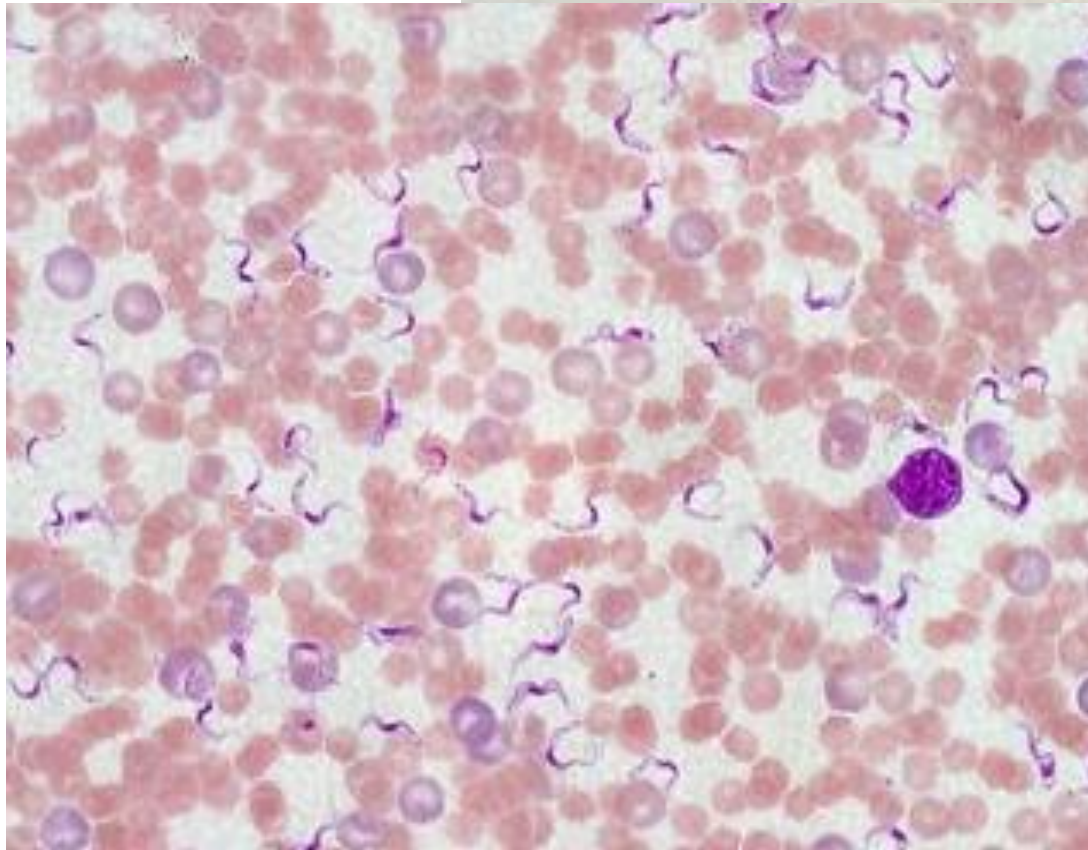
Giardia lamblia



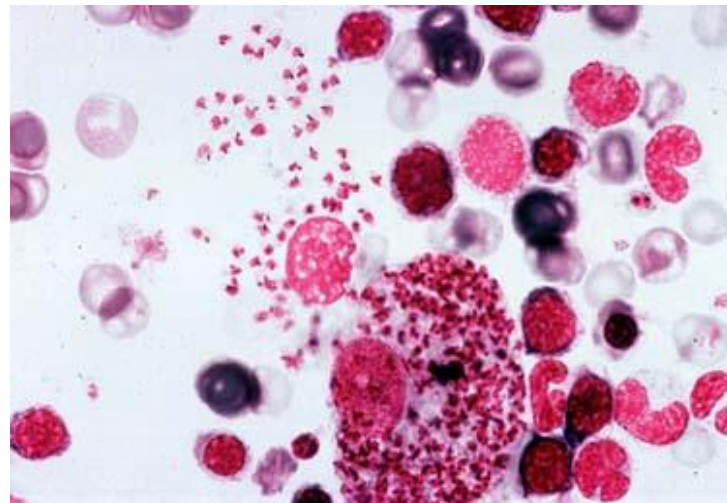
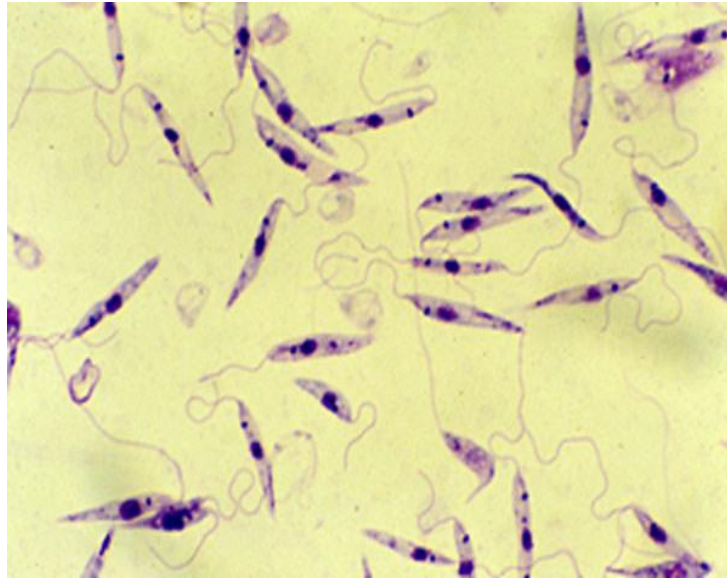
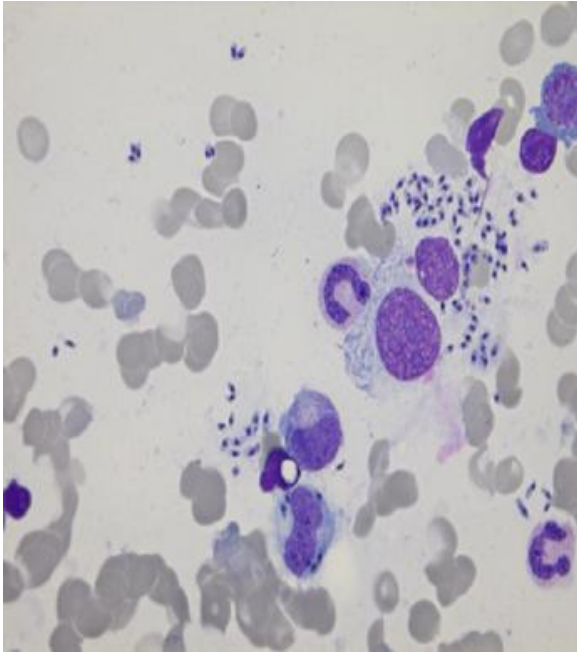
Trichomonas vaginalis



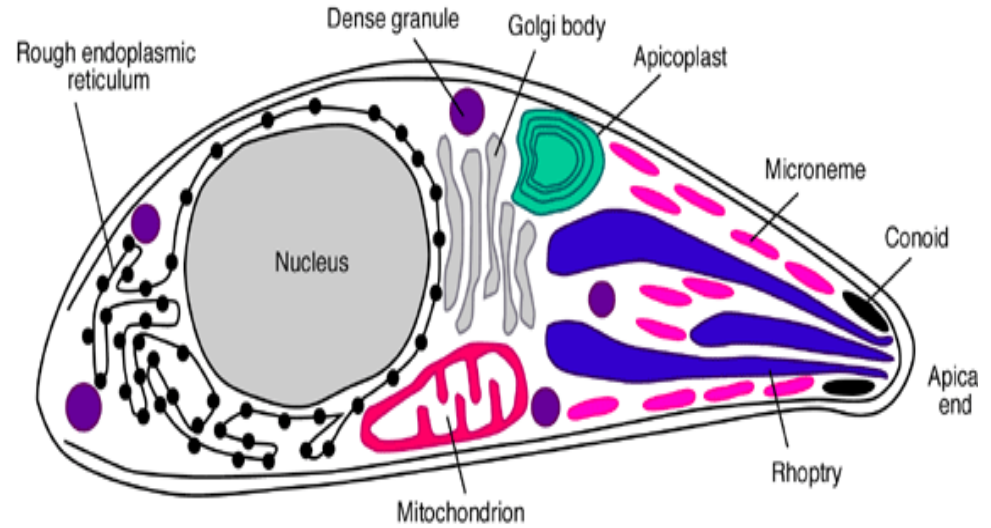
Trypanosoma gambiense,



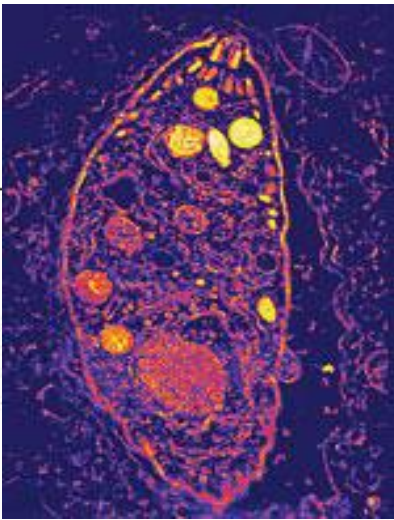
Leishmania sp.



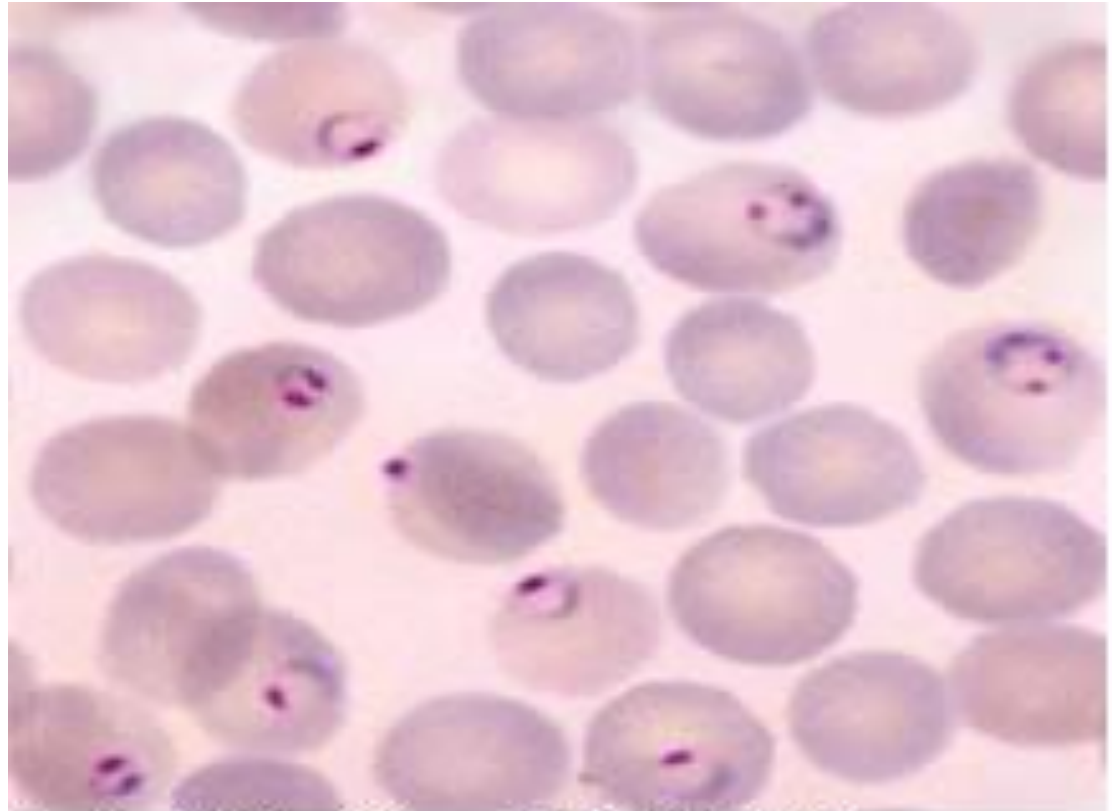
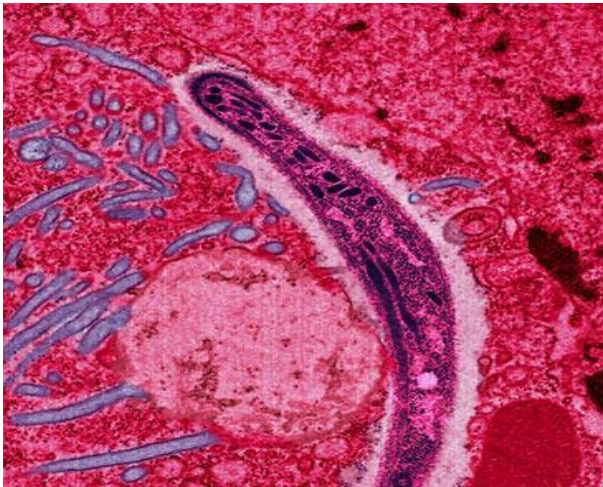
Toxoplasma gondii



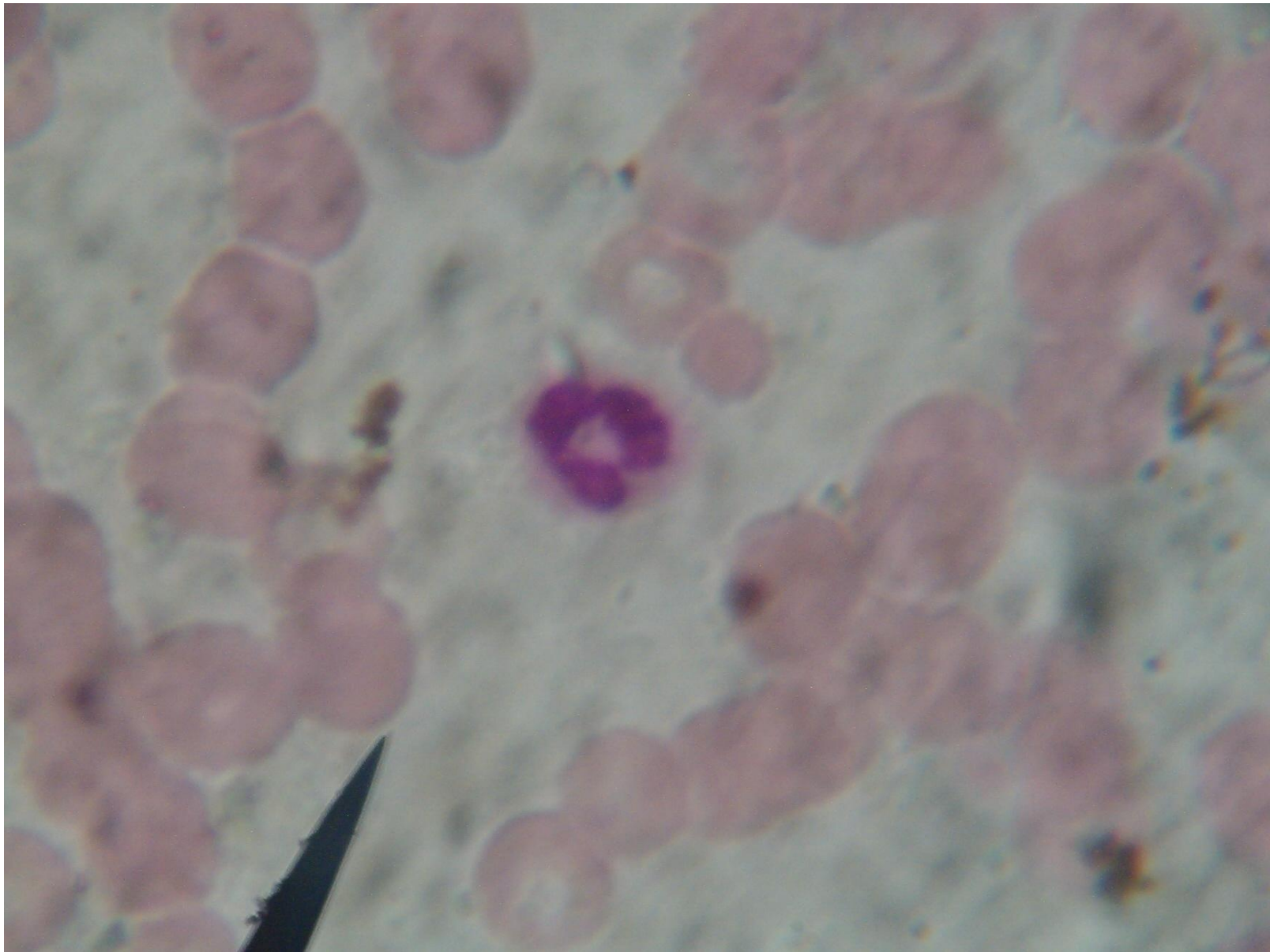
Ultrastructure of a *Toxoplasma gondii* tachyzoite



Plasmodium vivax and *P. falciparum*



— Parasitised red blood cells;
P. Falciparum trophozoites

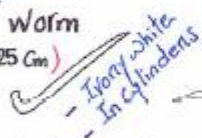


Round worms
Phylum: Nemathelminthes

Class: Nematoda

① Ascaris lumbricoides:

a) ♂ worm (15-25 cm)



Ivory white
In cylinders

b) ♀ worm (30 cm)



c) Egg



* oval
* dark brown
* striated wall

② Ancylostoma duodenale:

a) ♀ worm (10-13 cm)



b) ♂ Copulatory bursa



Overlapping fingers

③ Trichuris trichuria:

a) worm (whipworm, 3.5 cm)



b) Egg



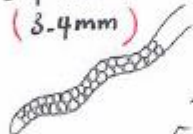
* Barrel-shaped
* 2 transparent poles

④ Trichinella spiralis:

a) ♂ worm (1.5 mm)



b) ♀ worm (3-4 mm)



c) Encysted Trichinella spiralis



* lemon-shaped
* Butt

⑤ Enterobius vermicularis:

a) ♂ worm (8-13 mm)



b) ♀ worm (8-13 mm)



c) Egg



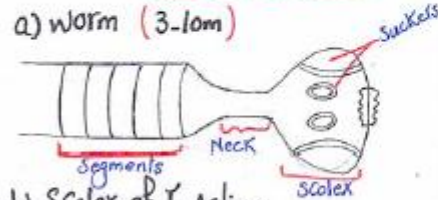
* Planoconvex
* D-shaped
* Transparent

Tape worms
Phylum: Platyhelminthes

Class: Cestoda

* Taenia saginata (Cows) & T. solium (Pigs)

a) worm (3-10 m)



b) Scolex of T. solium (Rhomboid shape)
Hook
Rostellum
Suckers



c) Cysticercus bovis of T. saginata



d) Gravid segment of T. saginata



e) Gravid segment of T. solium



A) Taenia egg
- Double shell
- Rounded



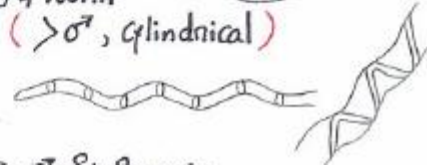
Class: Trematoda

* Schistosoma mansoni & S. hematobium

a) ♂ worm (flat, leaf-like)



b) ♀ worm (> ♂, cylindrical)



c) ♂ & ♀ worm



d) Egg of S. mansoni



e) Cercaria (forked bitid tail) "Infective Stage"



f) Metacercidium



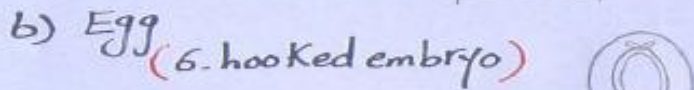
(stage w enters snail)

Tape worms

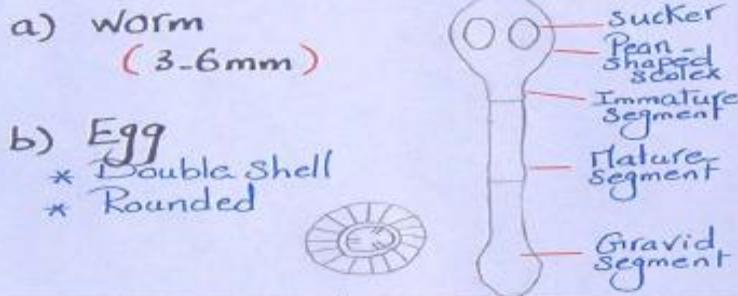
Phylum = Platyhelminthes

Class = Cestoda

① Hymenolepis nana (Dwarf worm)



② Echinococcus granulosus:

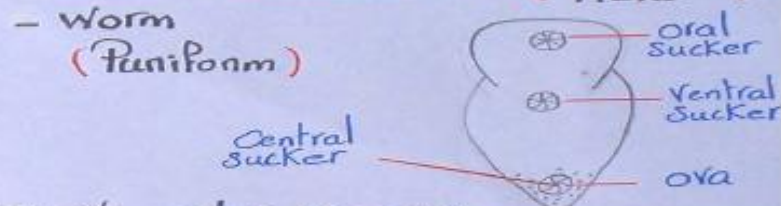


b) Egg

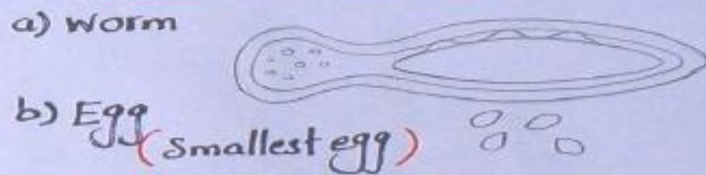
- * Double shell
- * Rounded

Class = Trematoda

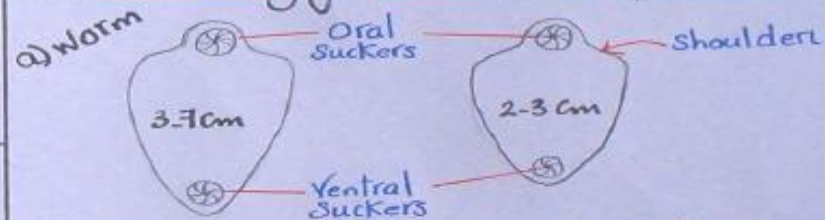
① Heterophyes heterophyes (Intestinal Fluke)



② Clonorchis sinensis:

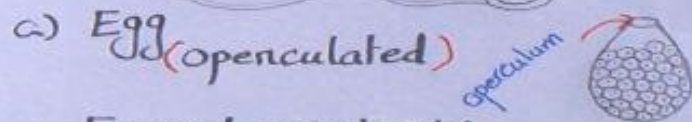


③ Fasciola gigantica & F. hepatica



b) Cercaria "Infective stage"

No Forked tail (3mm)

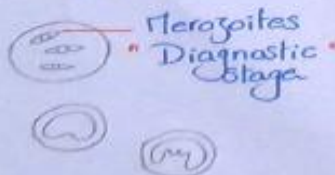


Protozoa

Class: Sporozoa

Plasmodium vivax
& P. falciparum

Causes Malignant
Chronic Malaria



Class: Mastigophora

Trypanosoma gambiense

