

Introduction to principles of  
pathology MB CH B 3 and BDS 3  
Introduction to General Pathology

Dr E Rogena,

22 -9-2014

# Objectives

- General introduction
- To discuss expectations on Lectures, Tutorials, Demonstrations
- To discuss clerkship requirements – bench demonstrations-tools, tests, etc
- To present recommended reading materials, references
- Continuous assessments, Exams and exam rules

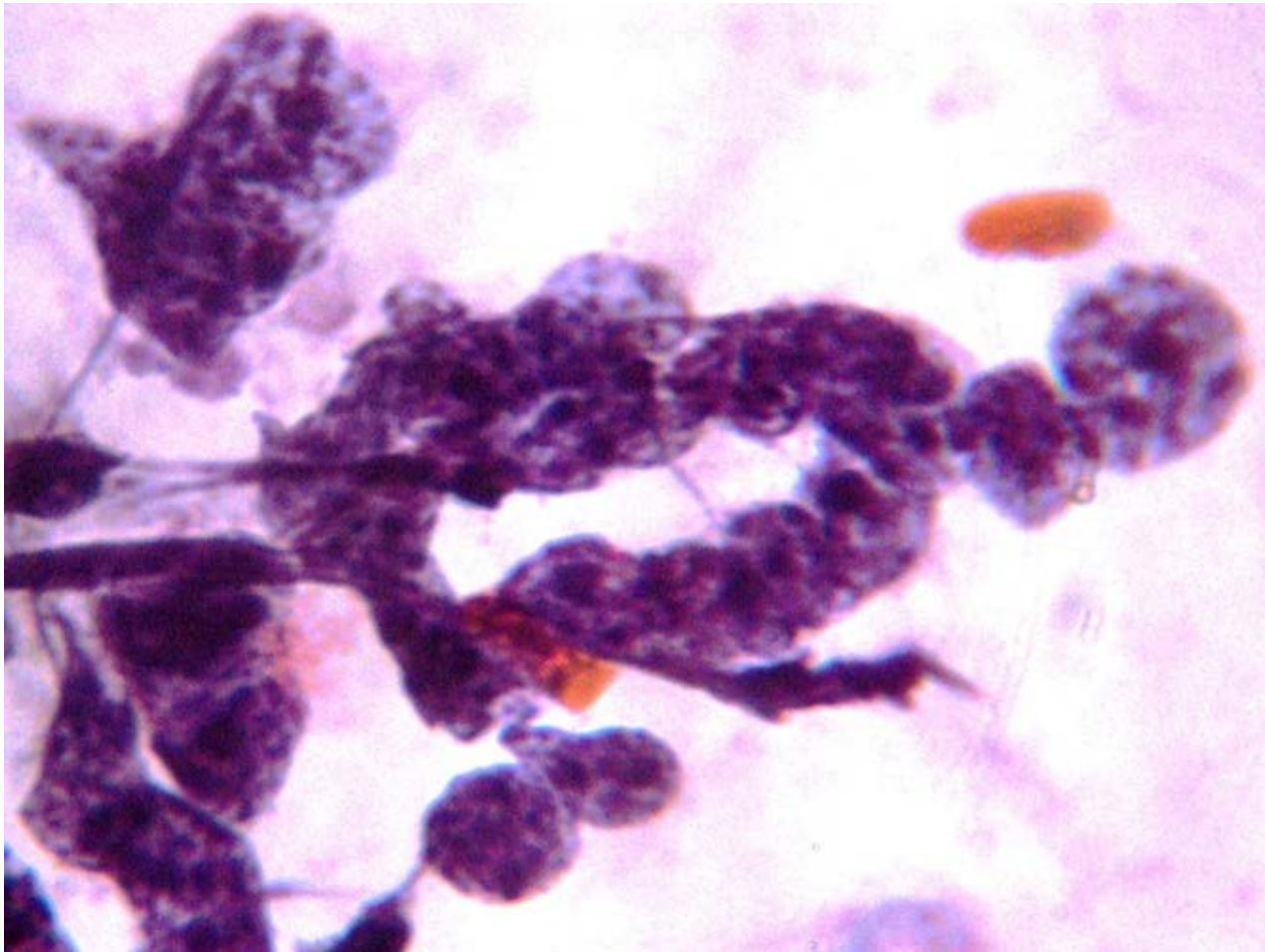
# Pathology

- **This is the study of disease**

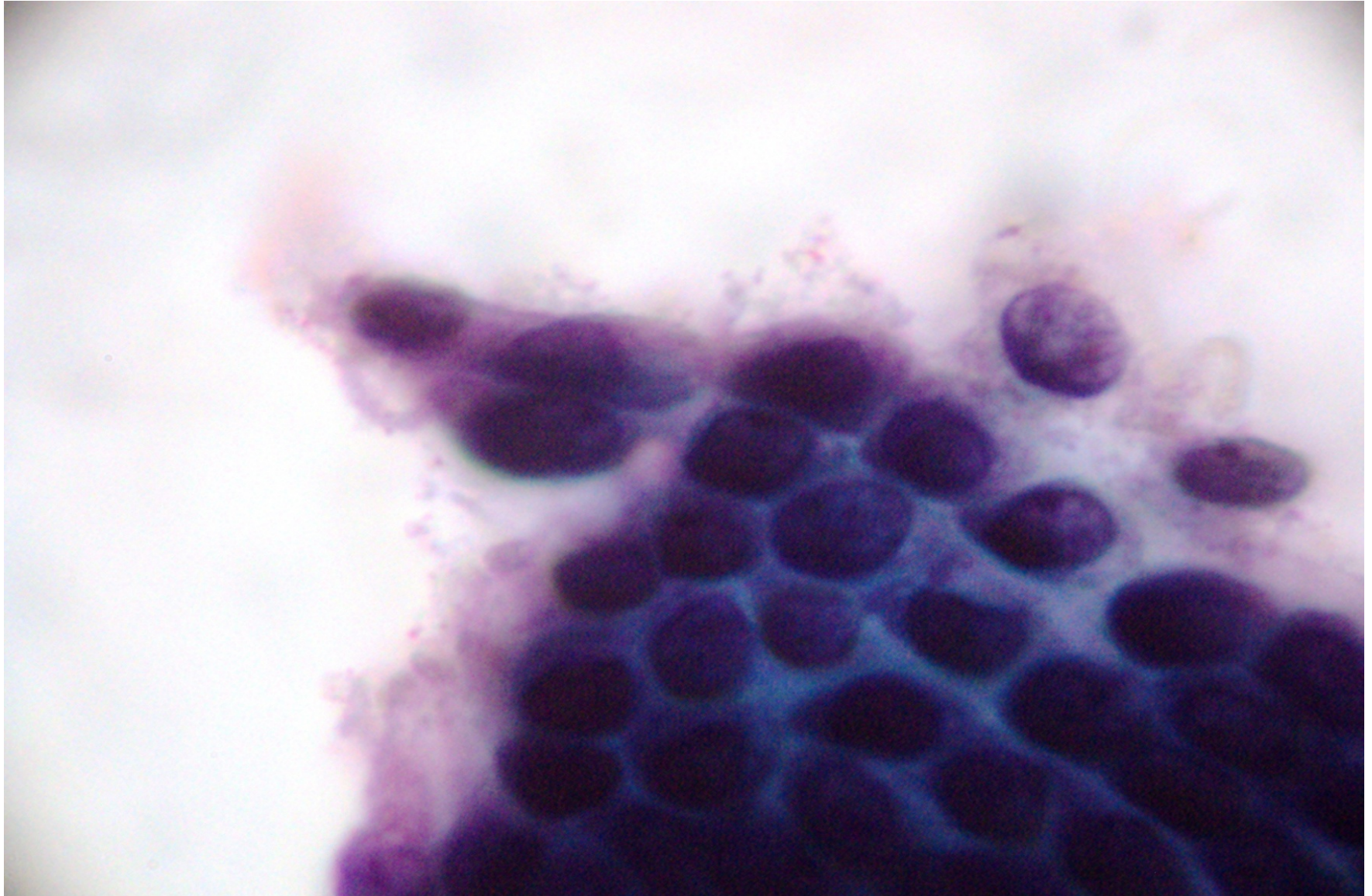
**Latin=** pathos (disease)      logos (study)

- General Pathology
- **Anatomic Pathology: physical (Gross),  
Microscopy (Histology/Cytology=  
histopathology ; cytopathology)  
manifestations of disease.**
- Other aspects, haematology, blood transfusion, clinical chemistry, immunology.

# Cytopathology= cells



# Cytopathology=cells



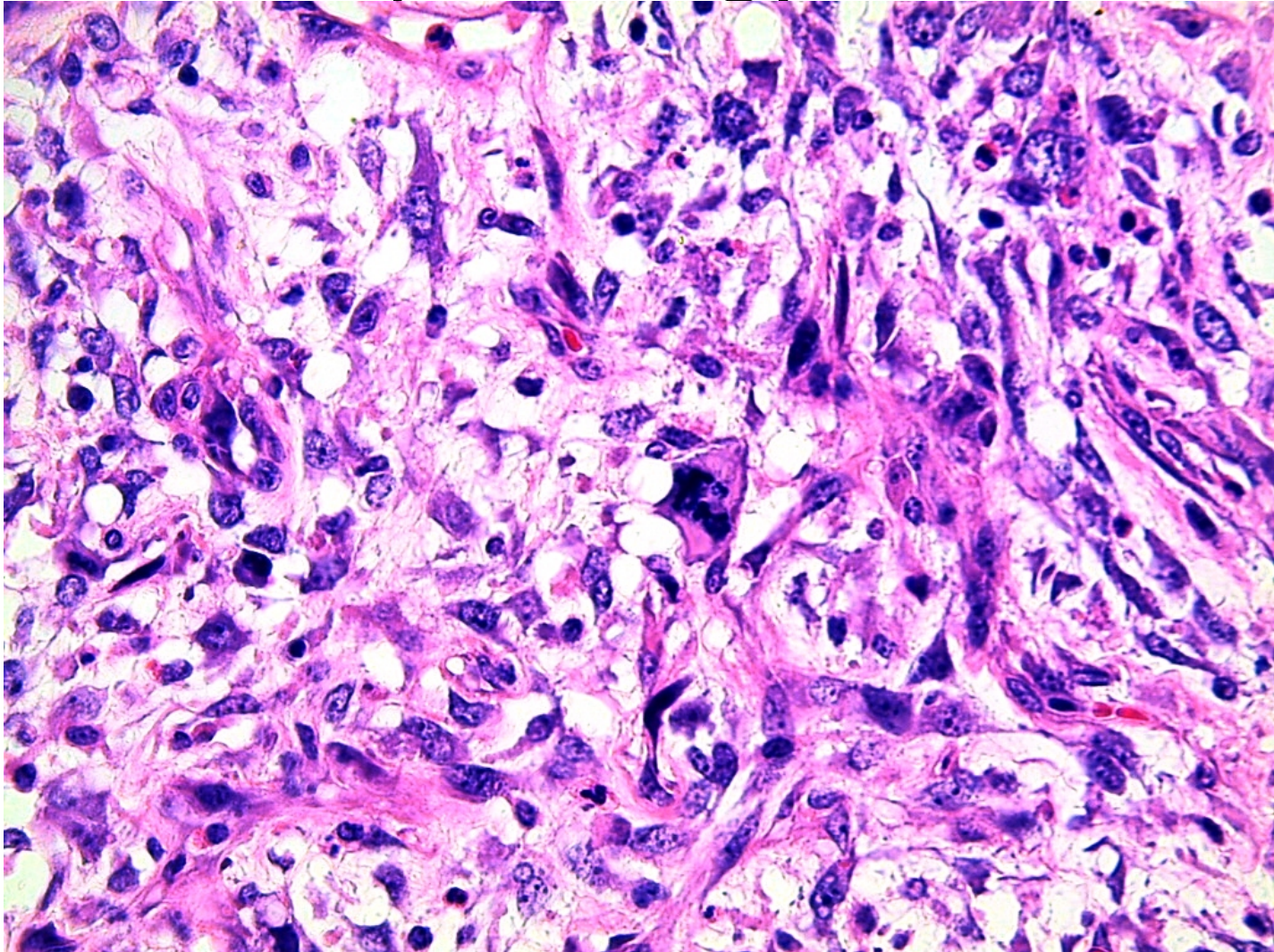
# Histopathology

- Histos- tissue
- Core biopsy
- Incisional biopsy
- Excisional biopsy
- Depends on access of the organ and the indication for the biopsy

# Gross



# Histopathology=tissue





# immunohistochemistry

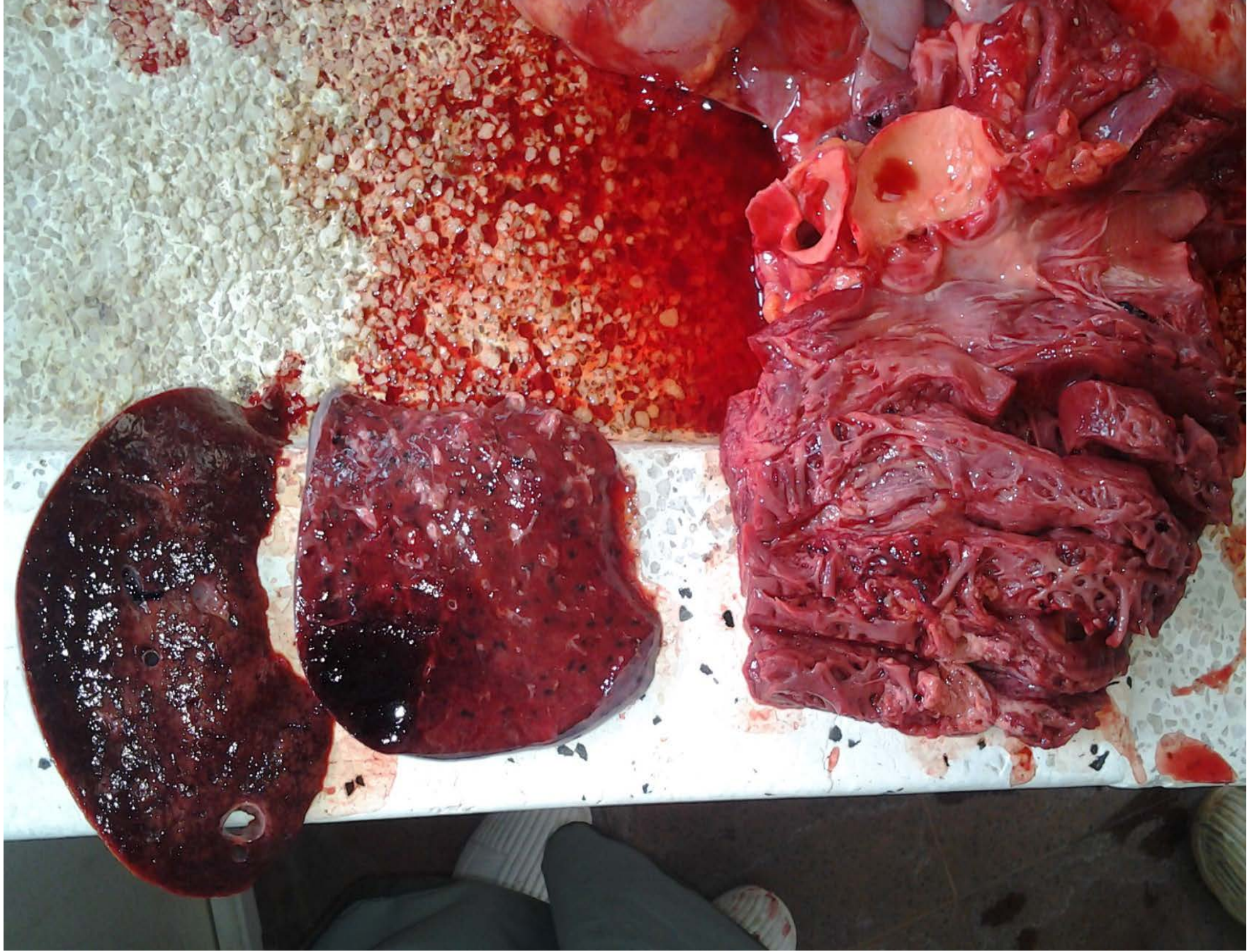
- Cell markers based on lineage- lymphoid, epithelial, neuroendocrine, soft tissue, etc
- Supports typing
- Treatment- e.g breast and lymphomas
- prognosis

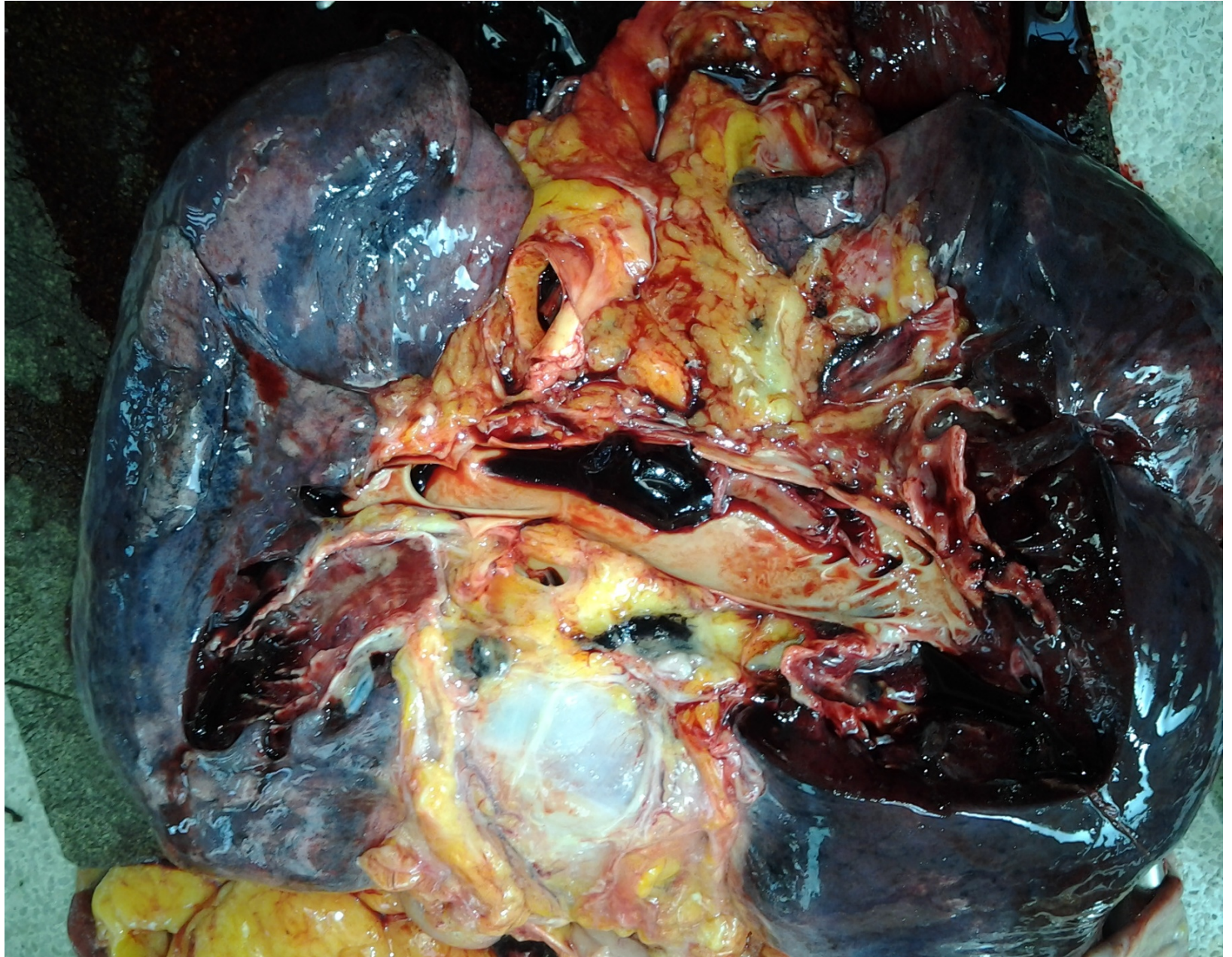
# Molecular markers

- Cytogenetics- identify genetic abberations associated with tumours- E.g- cmyc Burkitt lymphoma
- Philadelphia chromosome ABL - seen in Chronic granulocytic leukaemia

# Autopsy

- Similar to dissections at anatomy
- Differences: aim of dissection is to determine cause of death
- Just like in anatomy, this is your greatest teacher.





# Recommended reading materials

- Robbins Pathologic Basis of Disease
  - Lecture notes,
  - Peer reviewed journals eg Modern Pathology
  - MUSEUM
- 
- **Please, No to 'Okell's Notes'!**

# Assessments

- Continuous assessments
  - CATS –MCQ , ESSAY
- Examinations (**MUST HAVE ATTENDED CLERKSHIP, ALL LECTURES**)
  - MCQ
  - ESSAY
  - SPOT

# Conclusion

- Attend all classes, lecturers, clerkship, tutorials.
- Participate as much as possible
- Read recommended books, at least 4 hours per day of personal reading
- Read in advance of the lecture
- Foster group work.
- [edwin.walong@uonbi.ac.ke](mailto:edwin.walong@uonbi.ac.ke)
- [Rogena\\_emily@uonbi.ac.ke](mailto:Rogena_emily@uonbi.ac.ke)