

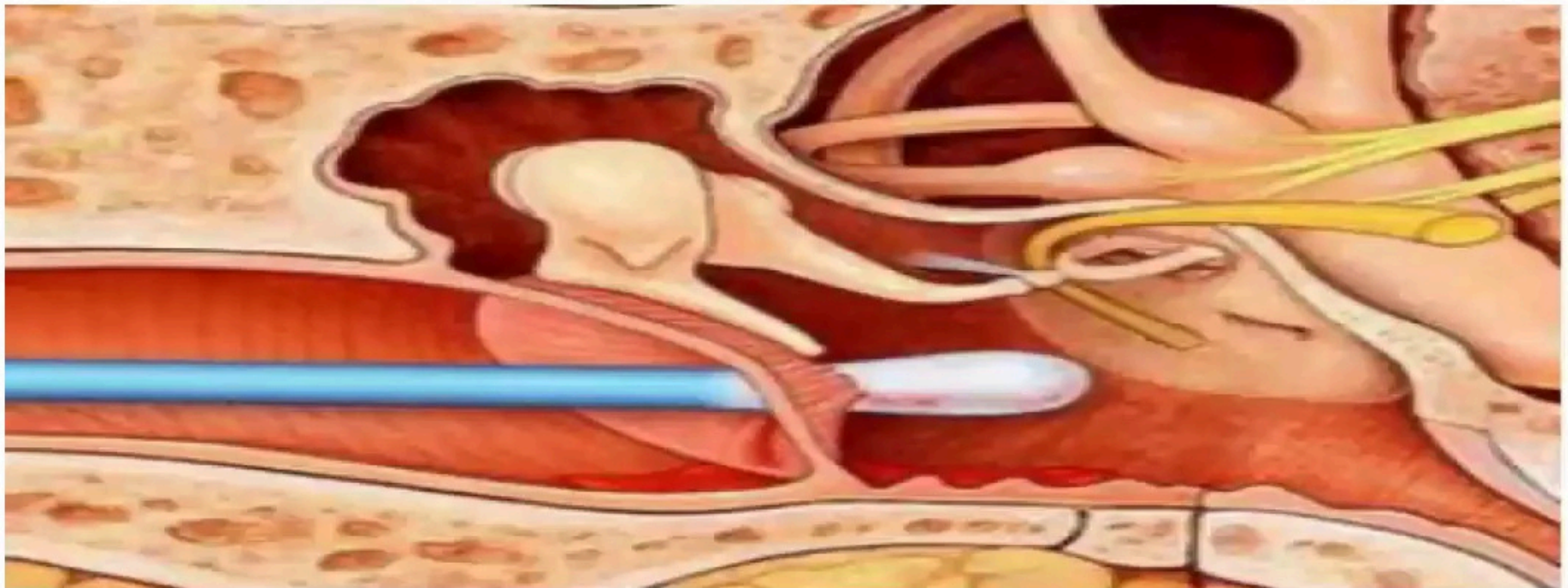
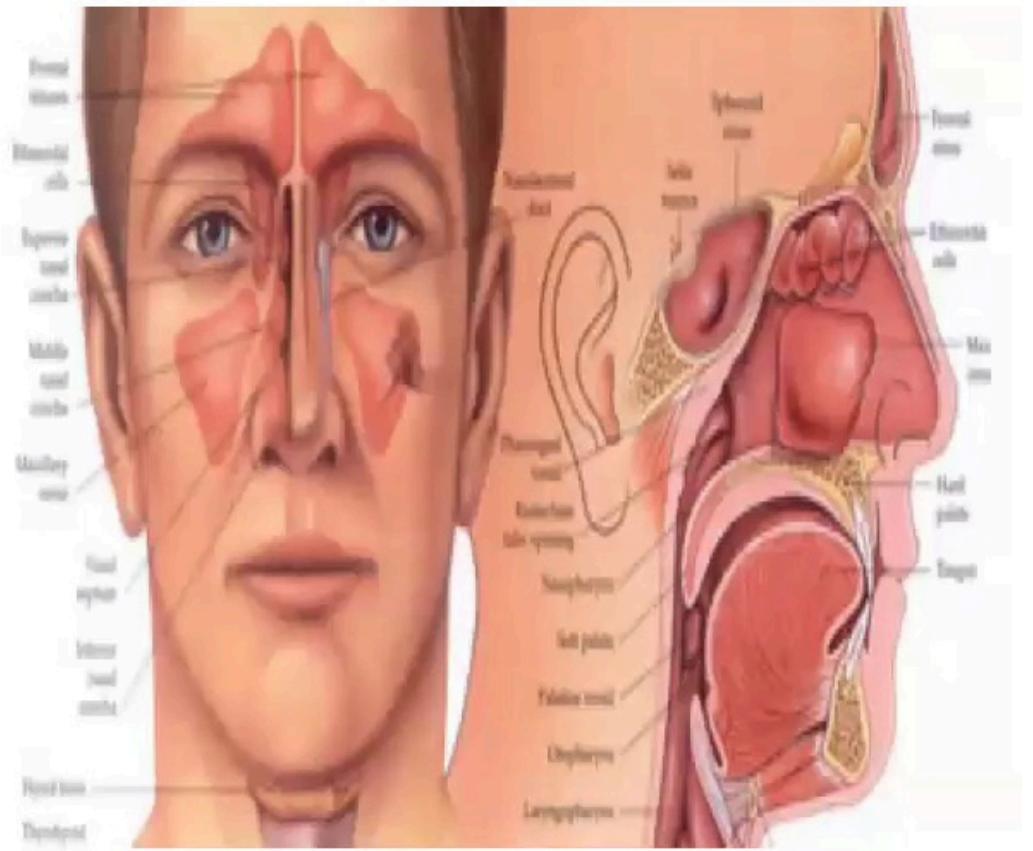
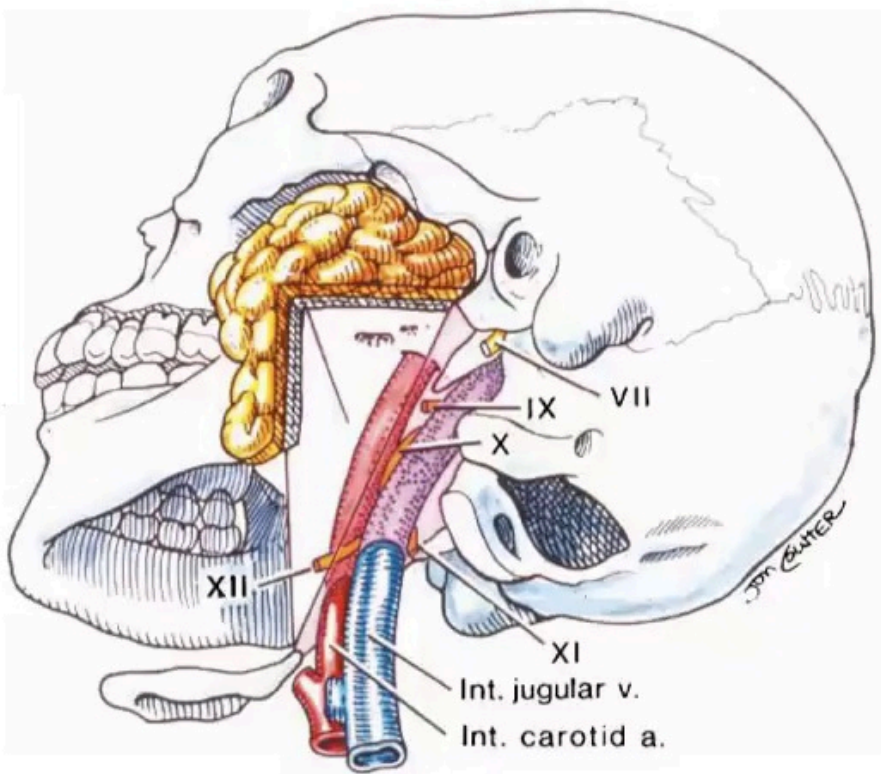
# History taking and Examination in ENT

Prof Muthure Macharia  
MBChB Year VI  
21-01-21



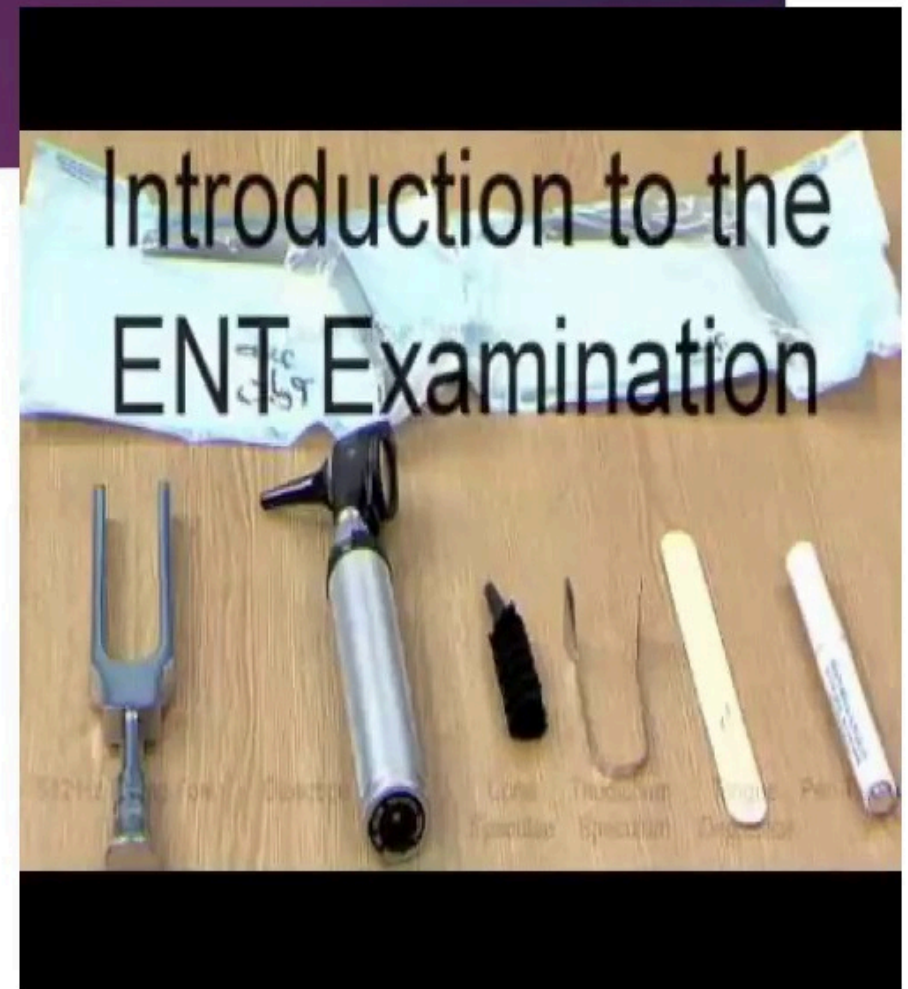
# Introduction

- ▶ History and clinical examination basis of diagnosis
- ▶ Approach whole patient
- ▶ Maintain patient's dignity during history taking and examination
- ▶ Be sensitive to cost effectiveness of investigations- What will be the value of investigations in determining management?

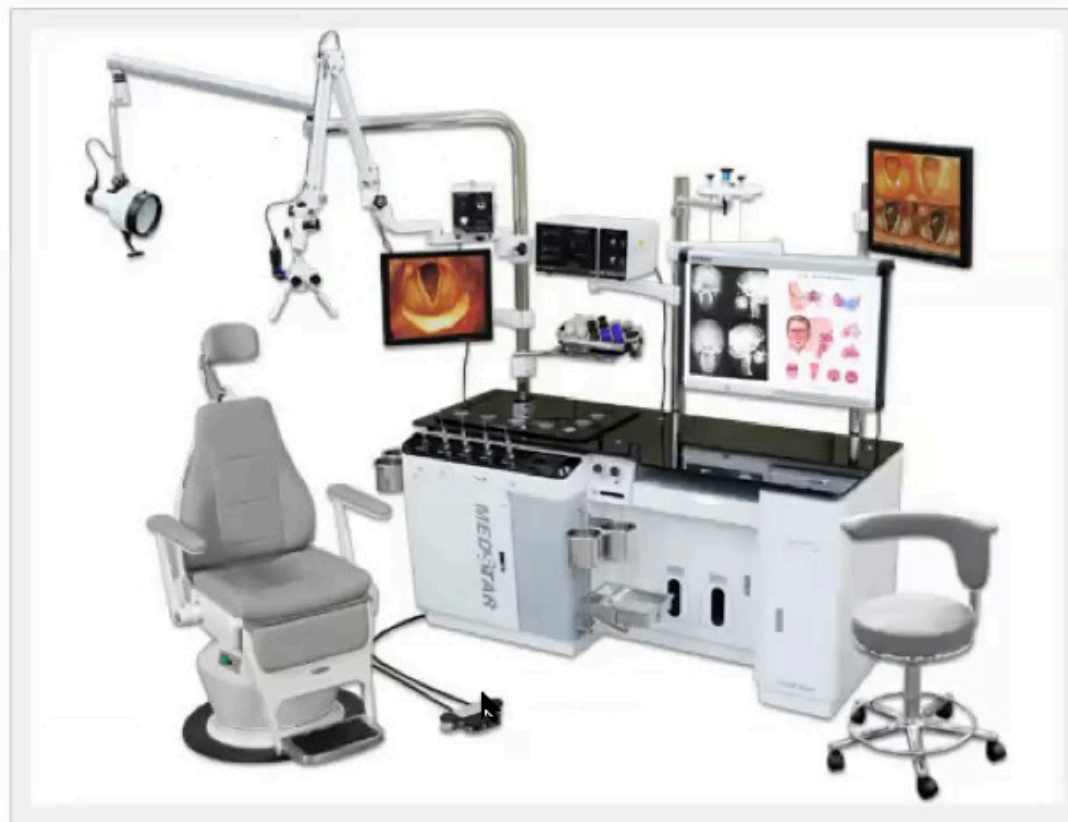


# Basic Equipment

- ▶ Good light
  - ▶ Head mirror
  - ▶ Head light
  - ▶ Torch
- ▶ Patients comfort
- ▶ Aural instruments
- ▶ Nasal instruments
- ▶ Oropharyngeal instruments



# ENT Workstation



# History taking

- ▶ History of present illness
  - ▶ Duration, onset, progression, severity
  - ▶ Accompanying complaints
  - ▶ Systemic diseases
  - ▶ Medications being taken or previously taken for illness
- ▶ History of past illness
- ▶ Personal History
- ▶ Family history

# The Ear

## ▶ Signs and symptoms

- ▶ Hearing
- ▶ Dizziness
- ▶ Pain
- ▶ Blockage
- ▶ Tinnitus
- ▶ Discharge
- ▶ Itching
- ▶ Swelling
- ▶ Deformity



# The Ear

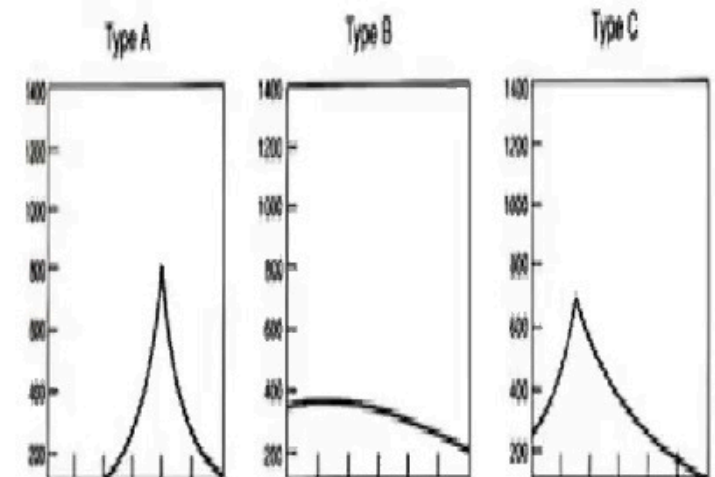
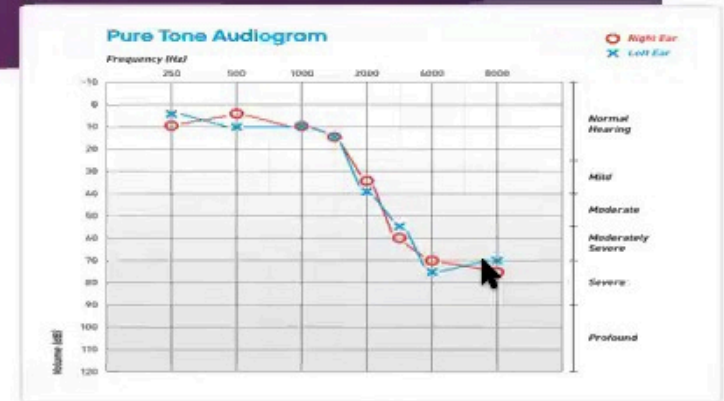
- ✦ Physical examination
  - ▶ External ear
    - ✦ Pinna and surrounding areas
    - ✦ External auditory canal
  - ▶ Tympanic membrane
  - ▶ Middle ear
  - ▶ Mastoid





# The Ear

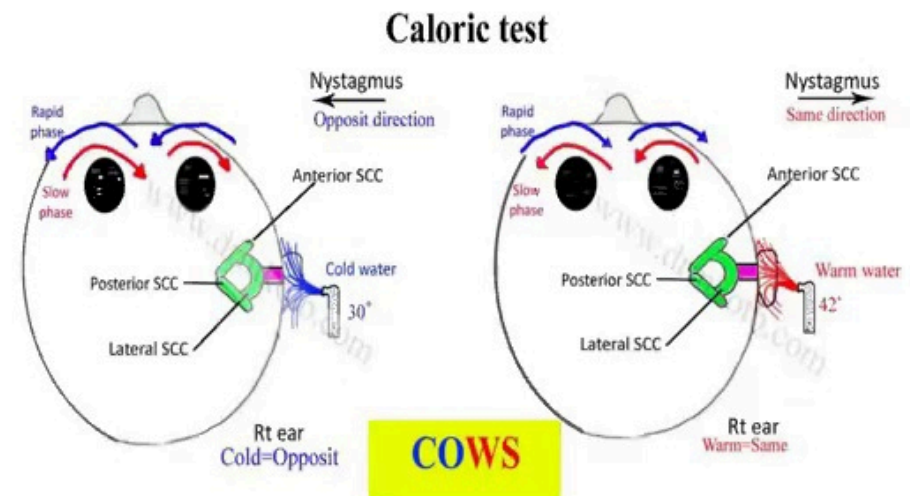
- ✦ Investigations
  - ▶ Audiometric
    - ✦ Pure tone audiometry
    - ✦ Tympanometry
    - ✦ Vestibular tests- Caloric, VNG
  - ▶ Biochemistry
    - ✦ Blood sugar
    - ✦ Urea/electrolytes
  - ▶ Serological/Immunological
  - ▶ Radiological
    - ✦ Plain xrays, CT Scan, MRI, Angiography



# The Ear

## Functional exam

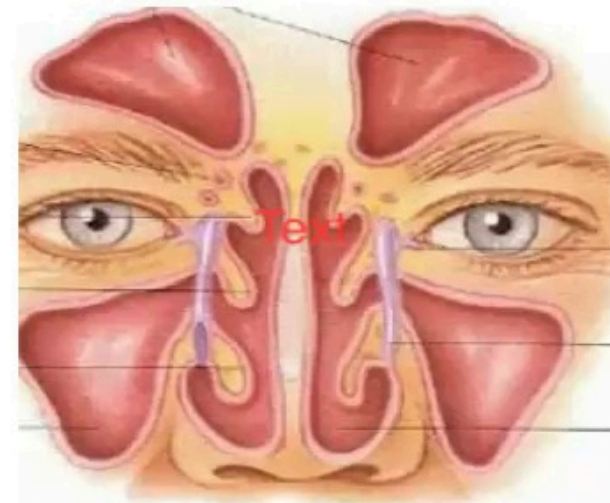
- ✦ Auditory function
  - ▶ Voice tests
  - ▶ Tuning fork tests
- ✦ Vestibular functions
  - ▶ Nystagmus
  - ▶ Positional tests
  - ▶ Fistula tests



# Nose and Sinuses

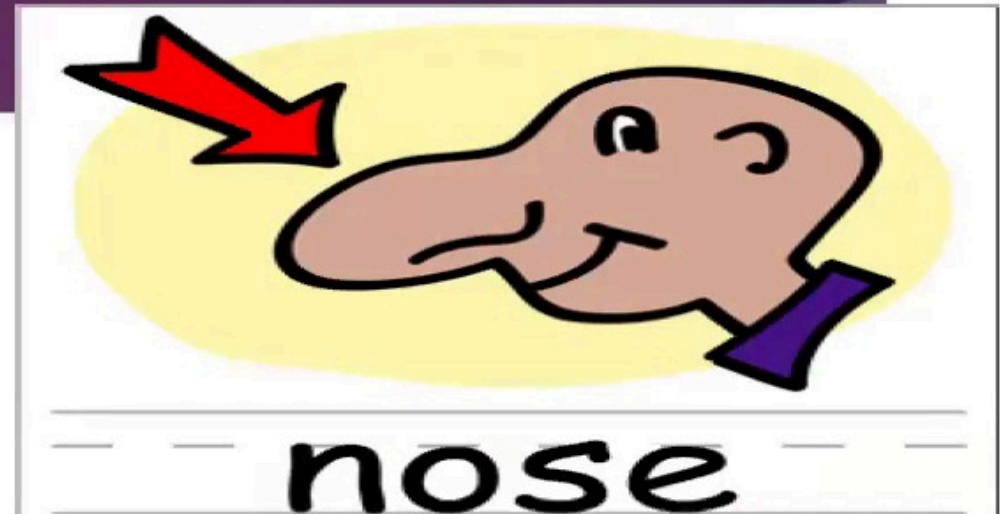
## Symptomatology

- Discharge
- Swelling/deformity
- Obstruction
- Bleeding
- Headache/facial pains
- Pains
- Smell disturbance
- Snoring
- Sneezing
- Postnasal drip



# Nose and Sinuses

- ▶ Physical Examination
  - ▶ External nose
  - ▶ Vestibule
  - ▶ Anterior Rhinoscopy
  - ▶ Posterior Rhinoscopy
  - ▶ Nasal endoscopy
  - ▶ sinuses



# Nose and Sinuses

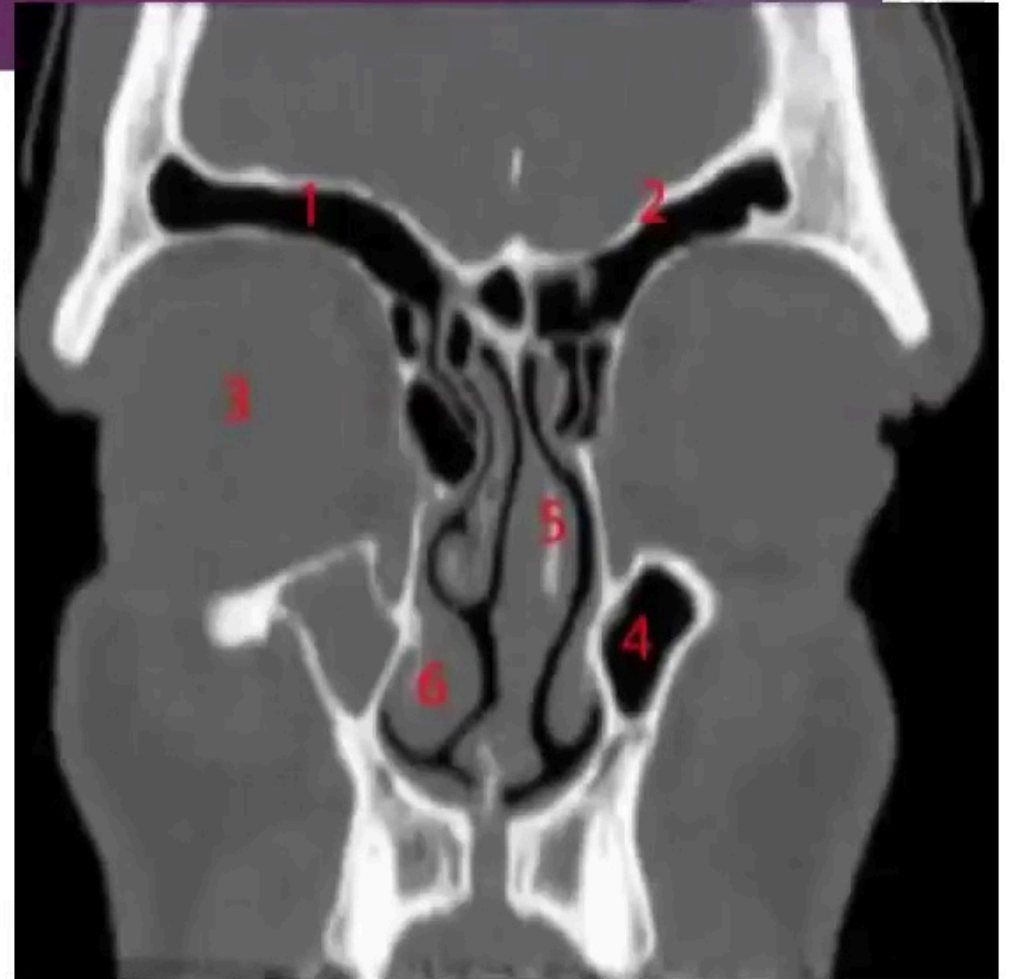
## Functional examination

- ▶ Patency
  - ▶ Mirror/spatula test
  - ▶ Cotton test
  - ▶ Acoustic rhinomanometry
- ▶ Smell test

# Nose and Sinuses

## Investigations

- ▶ Haematological
- ▶ Nasal smear
- ▶ Allergy tests
- ▶ Immunological
- ▶ Radiological
- ▶ Plain xrays, CTscans, MRI
- ▶ Renal function tests



# The Throat

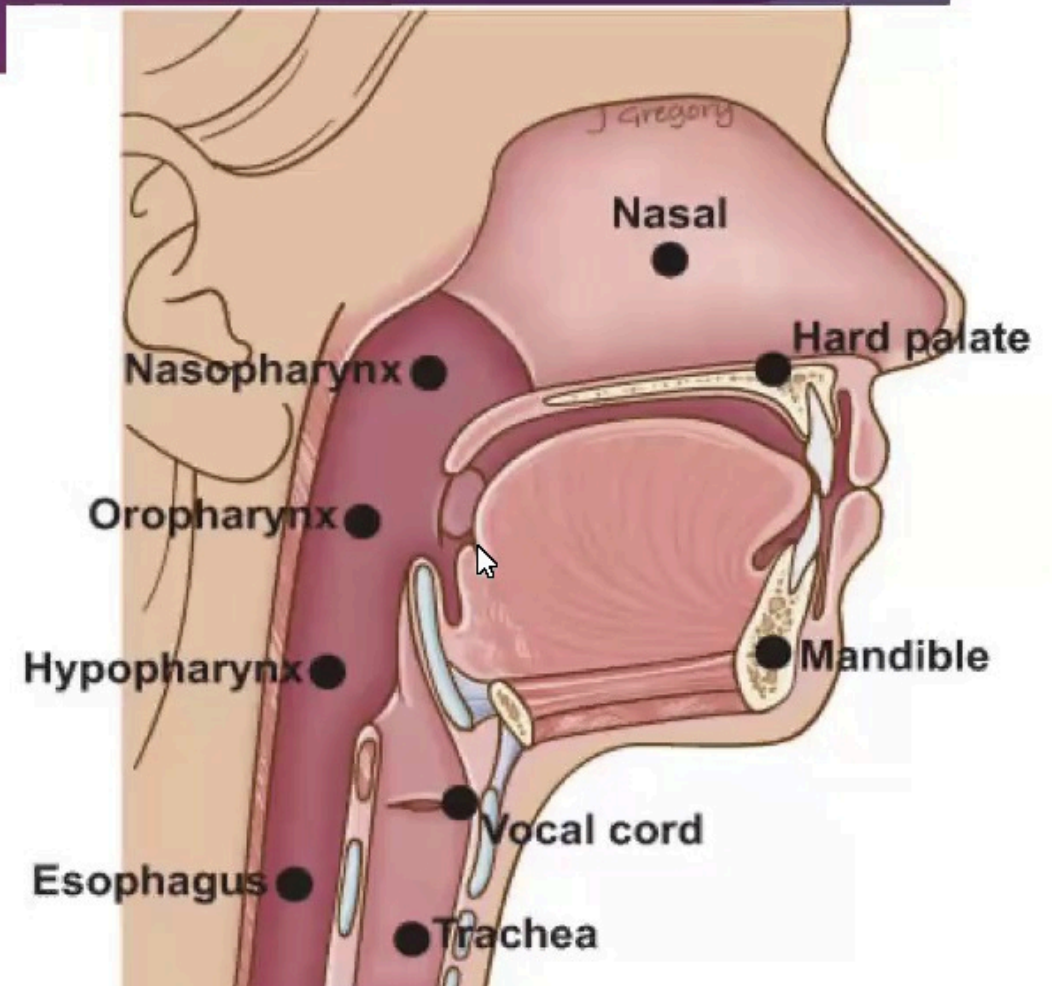
## Symptomatology

- Pain
- Disturbance of taste
- Swelling
- Sorethroat
- Hawking
- Lump
- Dysphagia
- Odynophagia
- Ulcers/sores
- voice changes
- Lump
- Cough
- Halitosis
- Burning sensation
- water blush
- Difficulty in breathing

# The throat

## Physical examination

- ▶ Lips
- ▶ Buccal mucosa
- ▶ Gums and teeth
- ▶ Hard palate
- ▶ Tongue
- ▶ Floor of mouth
- ▶ Retromolar trigone



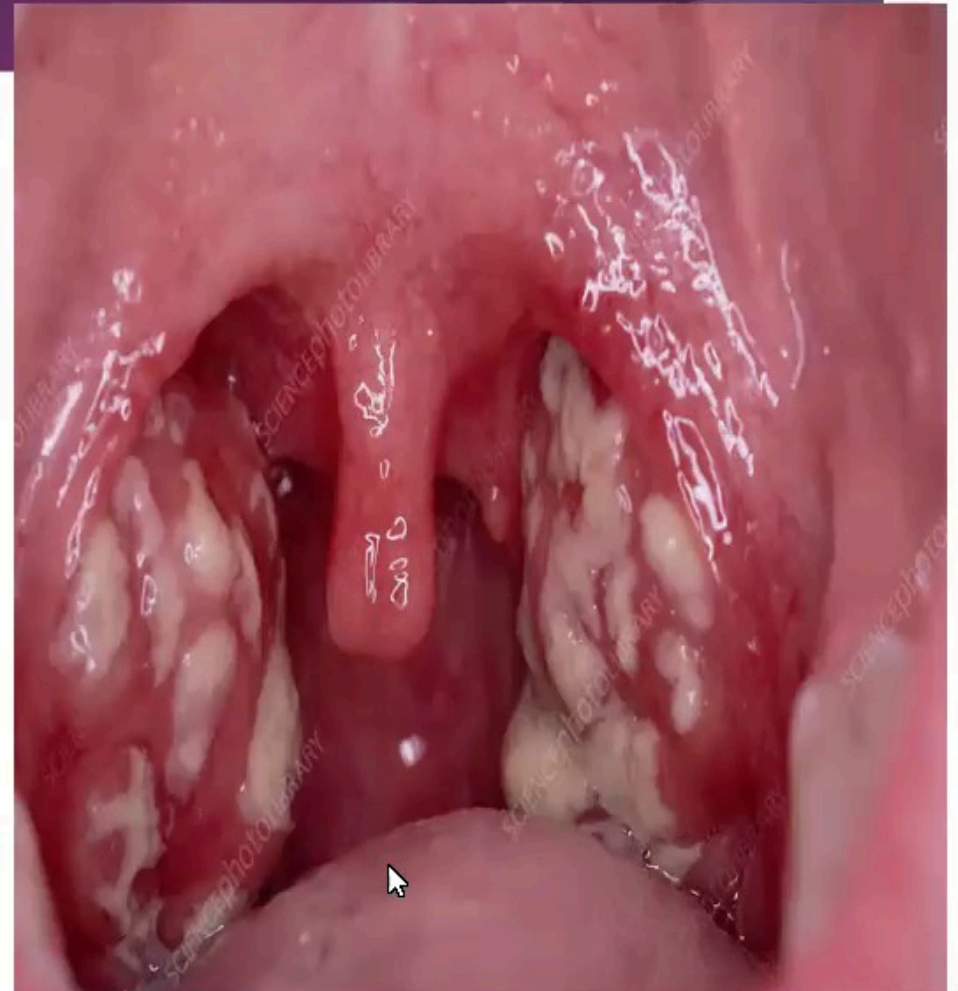


# Throat

## Physical examination

- ▶ Soft palate
- ▶ Tonsils
- ▶ Base of tongue
- ▶ Posterior pharyngeal wall
- ▶ Vallecular
- ▶ Hypopharynx
- ▶ Larynx

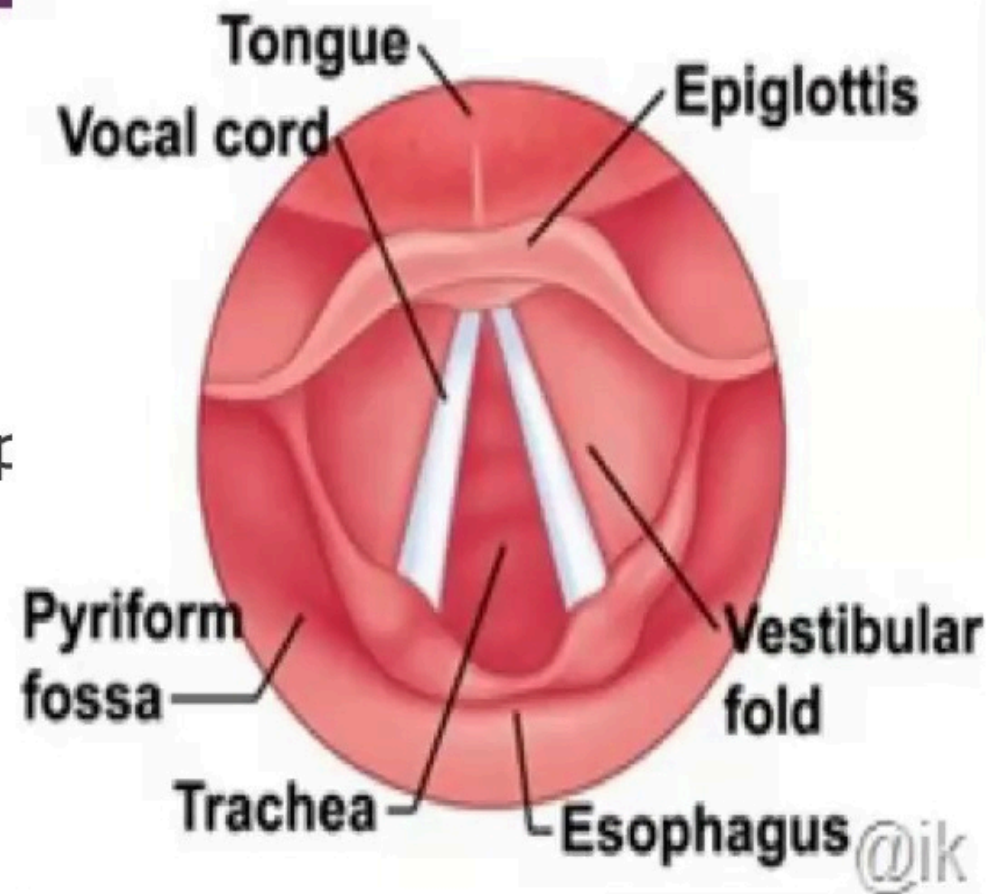
Bimanual palpation



# Throat

## Functional Examination

- ▶ taste
- ▶ Indirect laryngoscopy
- ▶ Flexible nasolaryngoscopy
- ▶ Rigid Laryngoscopy
- ▶ Videostroboscopy



# Throat

## Investigations

- ▶ Haematological
- ▶ Serological/immunological
- ▶ Radiological-Plain Xrays, CT scans, MRI, Contrast studies

# Neck

## Symptomatology

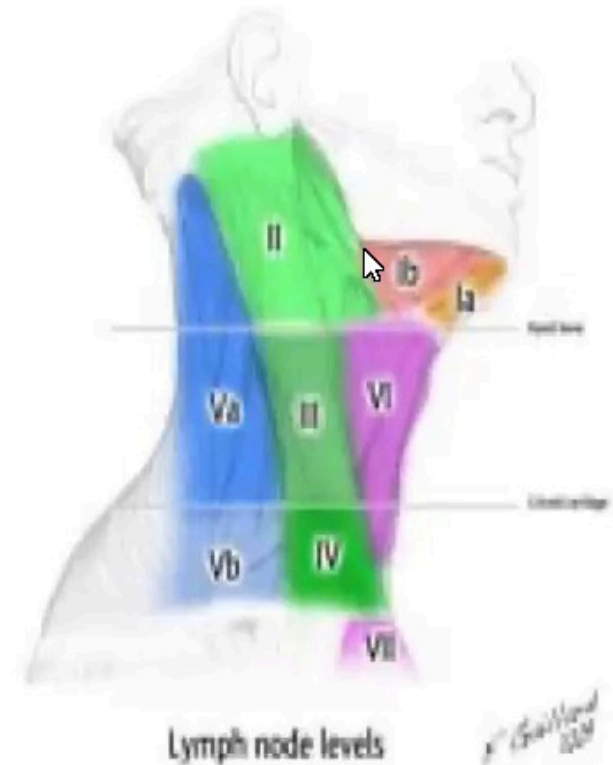
- ▶ Pain
- ▶ Swelling
- ▶ Discharge
- ▶ deformity

# Neck

## Physical Examination

- Levels of lymph nodes
- Description of swellings/masses
- ✓ Investigation
- ✓ Heamatological
- ✓ Serological/immunological
- ✓ Fine needle aspirate cytology
- ✓ Radiological
  - Plain xrays, CT Scans, MRI, Angiography, Ultrasound, sialography

\*NEUROLOGICAL EXAMINATION



Finally

Questions?????