

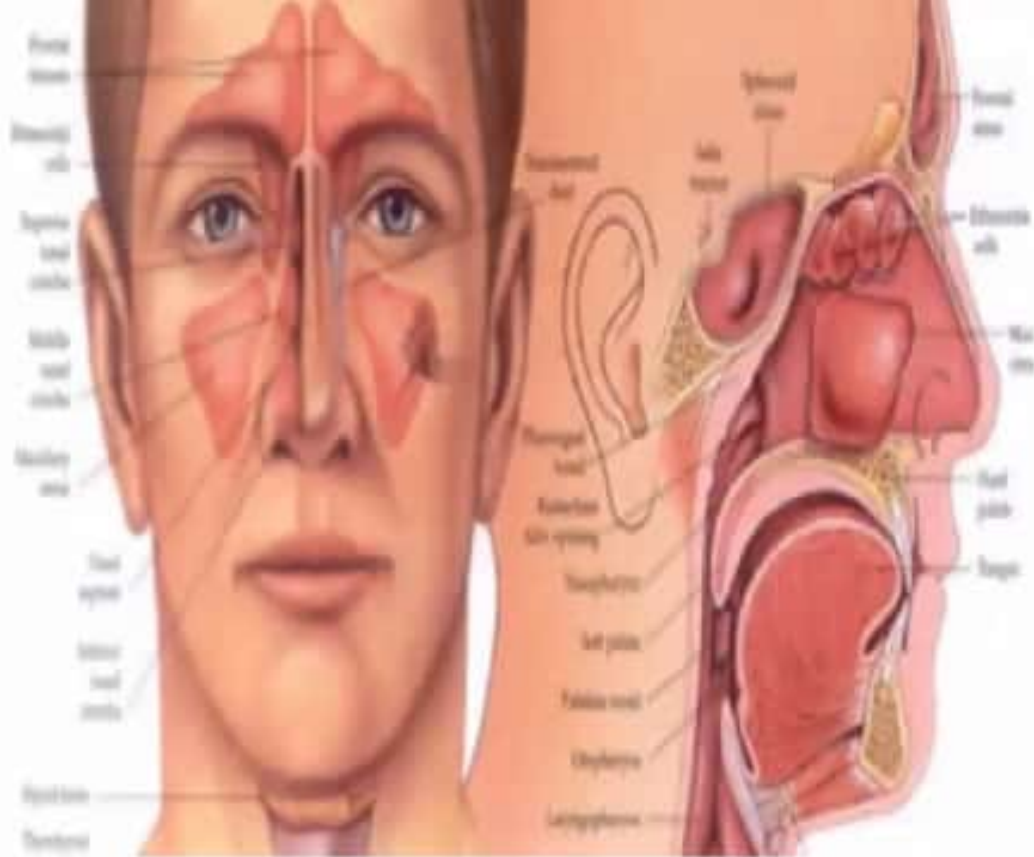
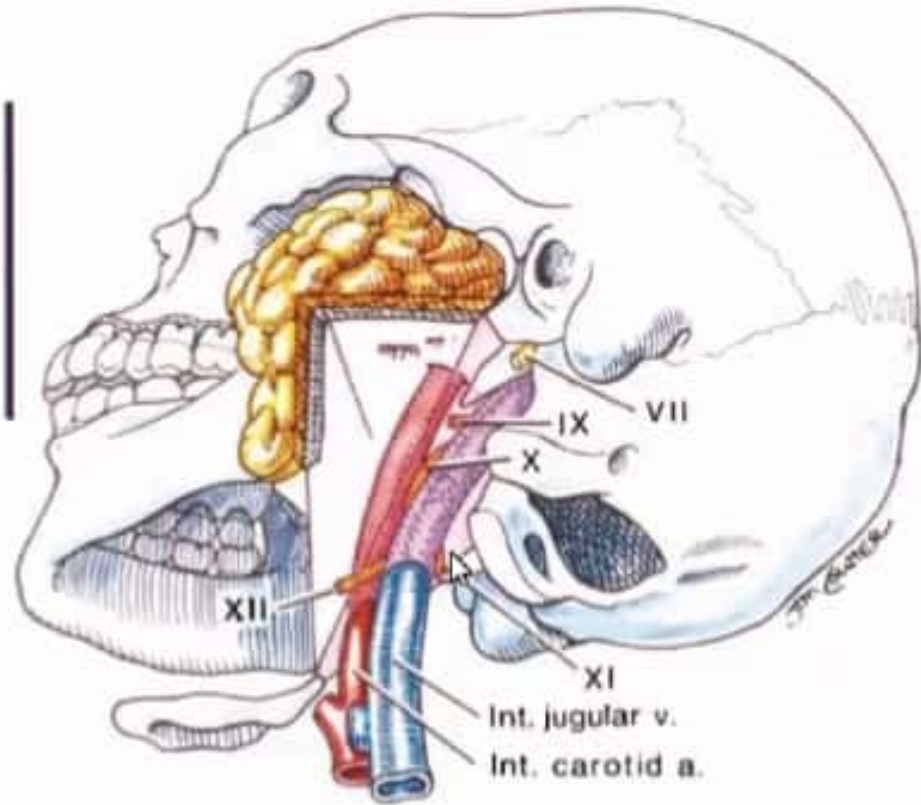
History taking and Examination in ENT

Prof Muthure Macharia
MBChB Year VI
21-01-21



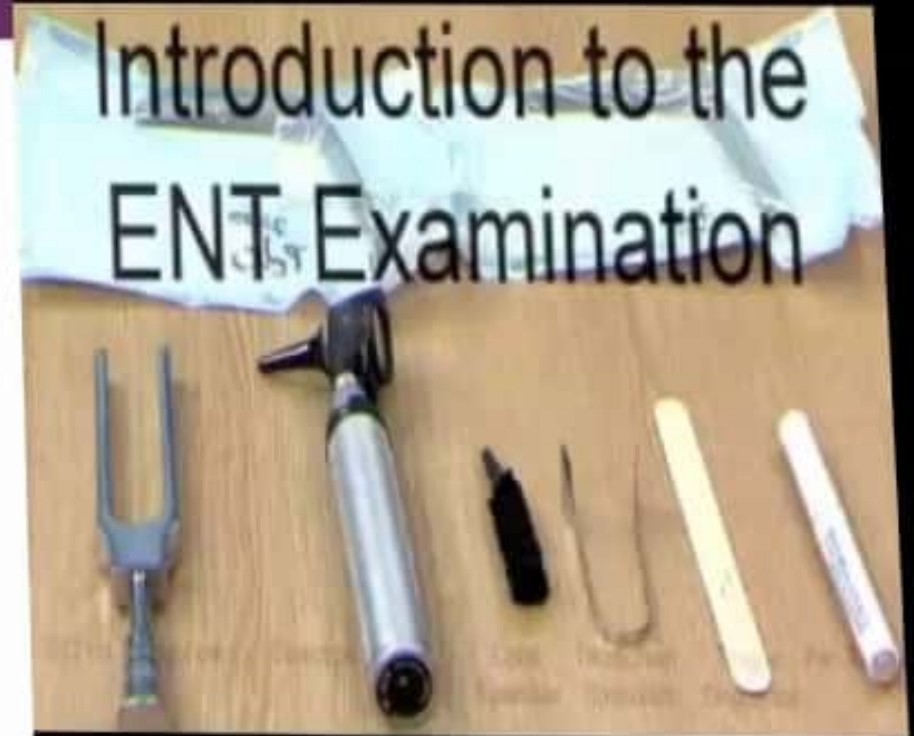
Introduction

- ▶ History and clinical examination basis of diagnosis
- ▶ Approach whole patient
- ▶ Maintain patient's dignity during history taking and examination
- ▶ Be sensitive to cost effectiveness of investigations- What will be the value of investigations in determining management?



Basic Equipment

- ▶ Good light
 - ▶ Head mirror
 - ▶ Head light
 - ▶ Torch
- ▶ Patients comfort
- ▶ Aural instruments
- ▶ Nasal instruments
- ▶ Oropharyngeal instruments



ENT Workstation



The Ear

▶ Signs and symptoms

- ▶ Hearing
- ▶ Dizziness
- ▶ Pain
- ▶ Blockage
- ▶ Tinnitus
- ▶ Discharge
- ▶ Itching
- ▶ Swelling
- ▶ Deformity



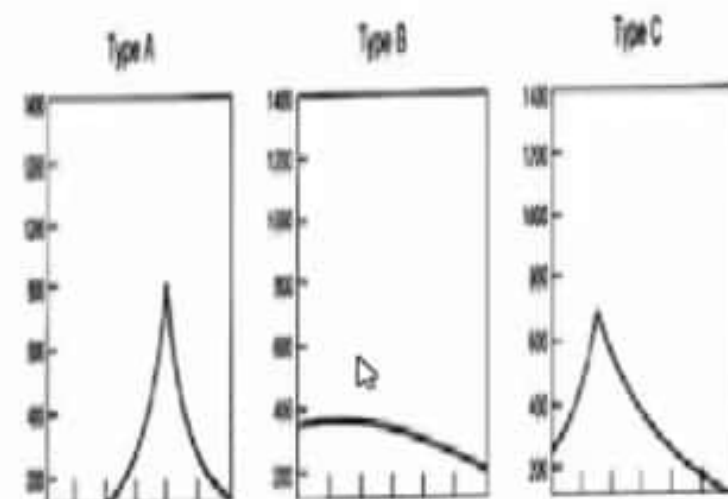
The Ear

- Physical examination
 - ▶ External ear
 - Pinna and surrounding areas
 - External auditory canal
 - ▶ Tympanic membrane
 - ▶ Middle ear
 - ▶ Mastoid



The Ear

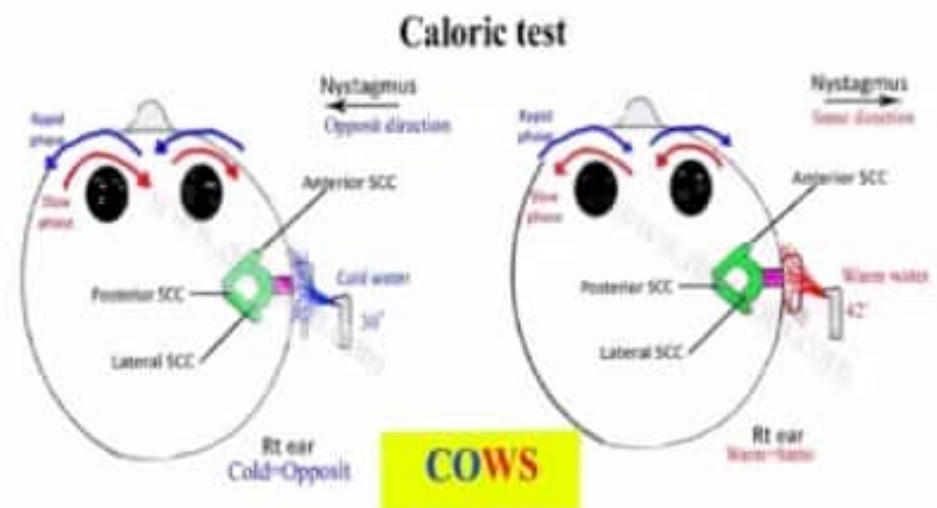
- Investigations
 - Audiometric
 - Pure tone audiometry
 - Tympanometry
 - Vestibular tests- Caloric, VNG
 - Biochemistry
 - Blood sugar
 - Urea/electrolytes
 - Serological/Immunological
 - Radiological
 - Plain xrays, CT Scan, MRI, Angiography



The Ear

Functional exam

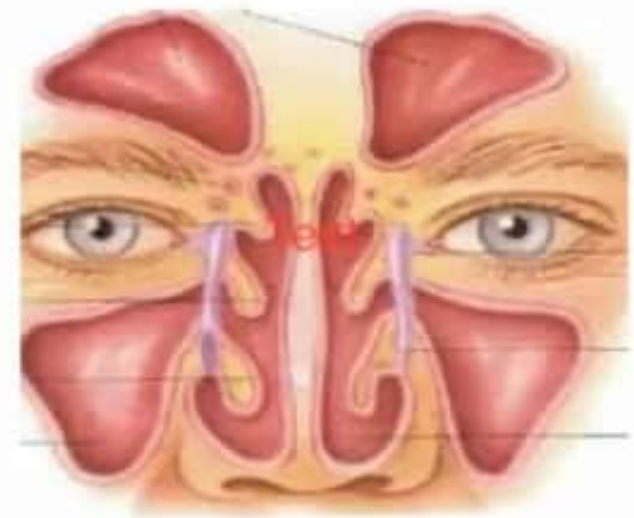
- ▶ Auditory function
 - ▶ Voice tests
 - ▶ Tuning fork tests
- ▶ Vestibular functions
 - ▶ Nystagmus
 - ▶ Positional tests
 - ▶ Fistula tests



Nose and Sinuses

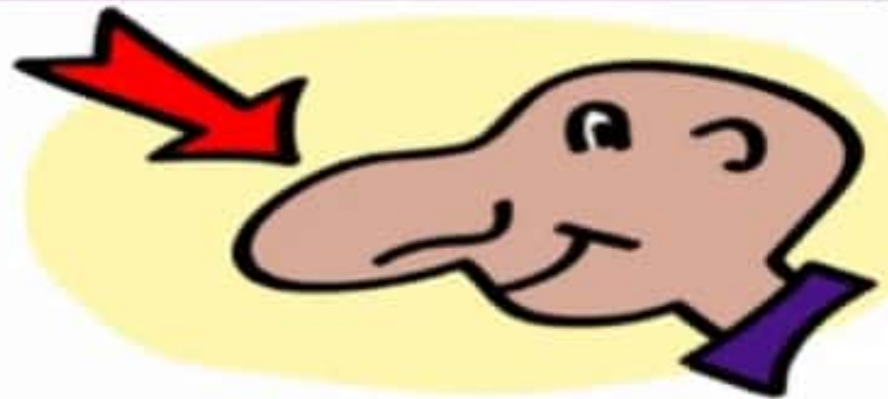
Symptomatology

- Discharge
- Swelling/deformity
- Obstruction
- Bleeding
- Headache/facial pains
- Pains
- Smell disturbance
- Snoring
- Sneezing
- Postnasal drip



Nose and Sinuses

- ▶ Physical Examination
 - ▶ External nose
 - ▶ Vestibule
 - ▶ Anterior Rhinoscopy
 - ▶ Posterior Rhinoscopy
 - ▶ Nasal endoscopy
 - ▶ sinuses



nose



Nose and Sinuses

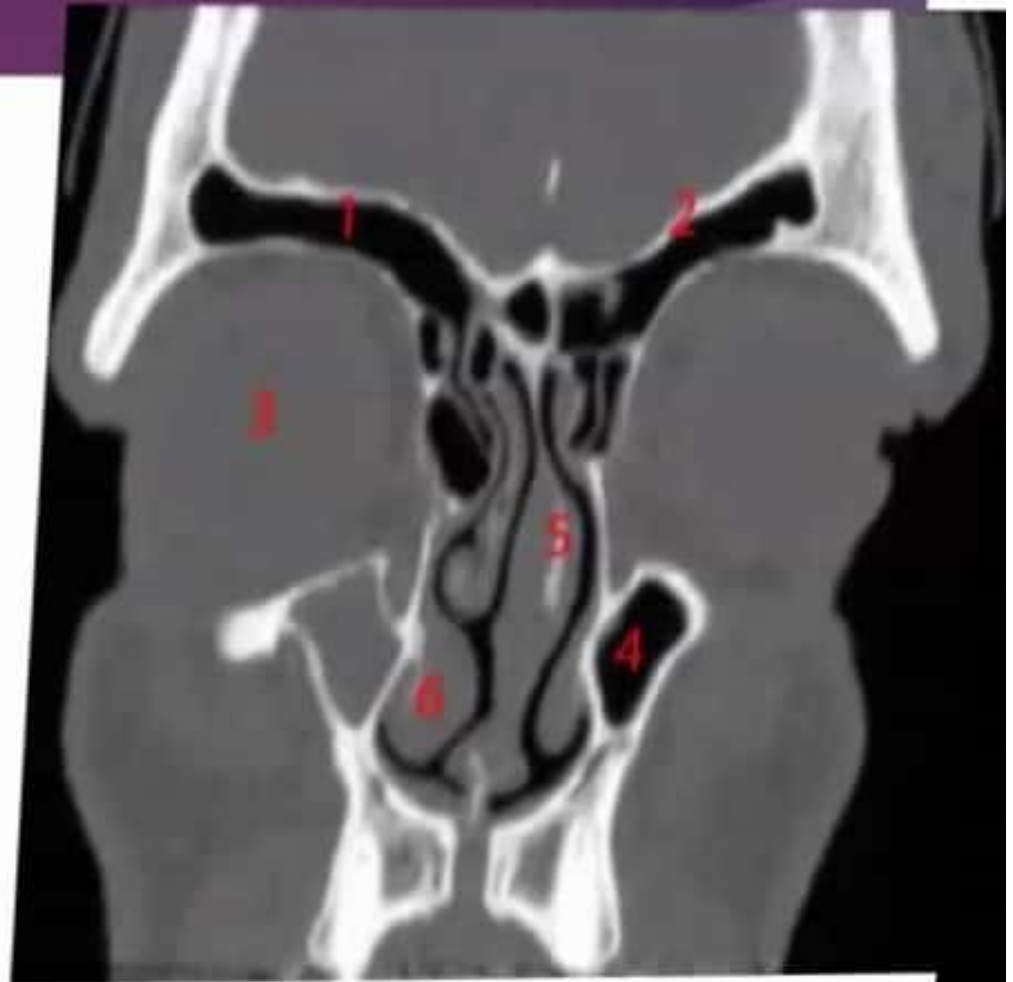
Functional examination

- ▶ Patency
 - ▶ Mirror/spatula test
 - ▶ Cotton test
 - ▶ Acoustic rhinomanometry
- ▶ Smell test

Nose and Sinuses

Investigations

- ▶ Heamatological
- ▶ Nasal smear
- ▶ Allergy tests
- ▶ Immunological
- ▶ Radiological
- ▶ Plain xrays, CTscans,MRI
- ▶ Renal function tests



The Throat

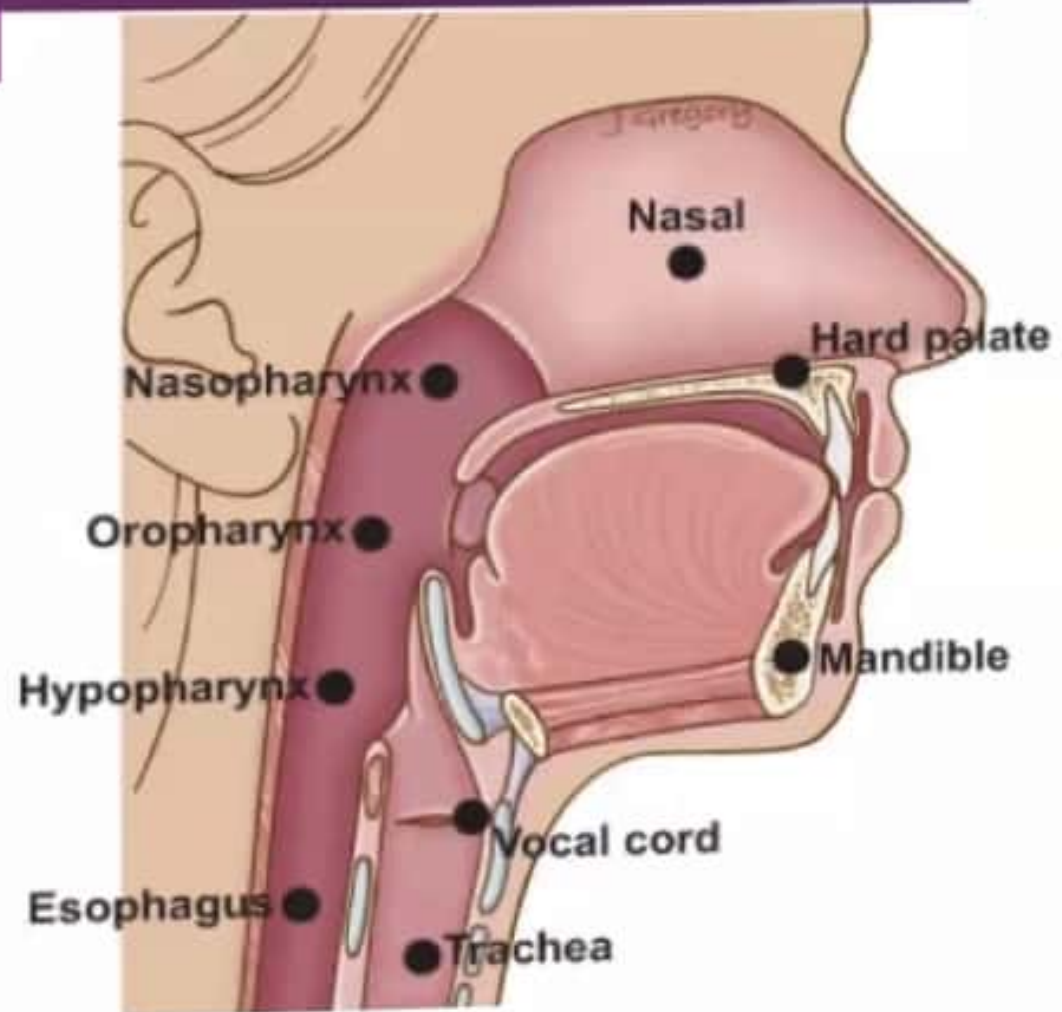
Symptomatology

- Pain
- Disturbance of taste
- Swelling
- Sorethroat
- Hawking
- Lump
- Dysphagia
- Odynophagia
- Ulcers/sores
- voice changes
- Lump
- Cough
- Halitosis
- Burning sensation
- water blush
- Difficulty in breathing

The throat

Physical examination

- ▶ Lips
- ▶ Buccal mucosa
- ▶ Gums and teeth
- ▶ Hard palate
- ▶ Tongue
- ▶ Floor of mouth
- ▶ Retromolar trigone



Throat

Physical examination

- ▶ Soft palate
- ▶ Tonsils
- ▶ Base of tongue
- ▶ Posterior pharyngeal wall
- ▶ Vallecular
- ▶ Hypopharynx
- ▶ Larynx

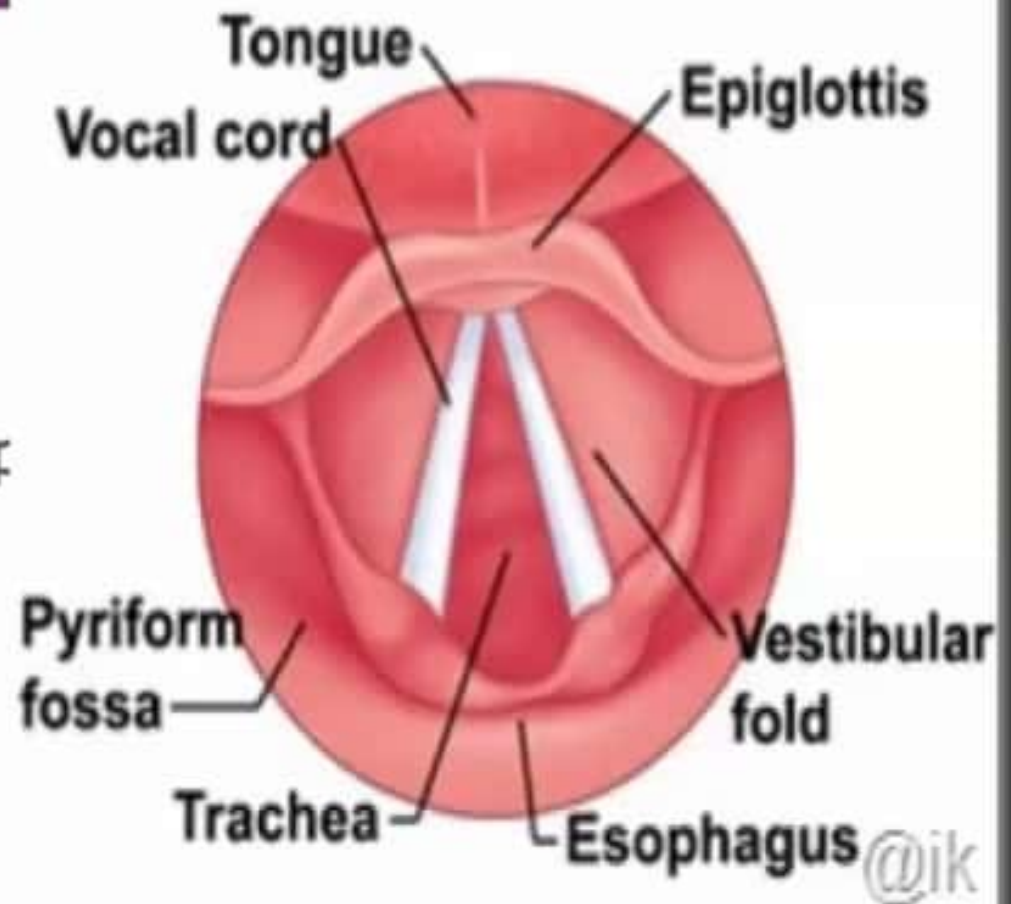
Bimanual palpation



Throat

Functional Examination

- ▶ taste
- ▶ Indirect laryngoscopy
- ▶ Flexible nasolaryngoscopy
- ▶ Rigid Laryngoscopy
- ▶ Videostroboscopy



Throat

Investigations

- ▶ Haematological
- ▶ Serological/immunological
- ▶ Radiological-Plain Xrays, CT scans, MRI, Contrast studies

Neck

Symptomatology

- ▶ Pain
- ▶ Swelling
- ▶ Discharge
- ▶ deformity

Neck

Physical Examination

- Levels of lymph nodes
- Description of swellings/masses
- Investigation
- Haematological
- Serological/immunological
- Fine needle aspirate cytology
- Radiological
 - Plain xrays, CT Scans, MRI, Angiography, Ultrasound, sialography

*NEUROLOGICAL EXAMINATION



Lymph node levels

F. Galland
2008