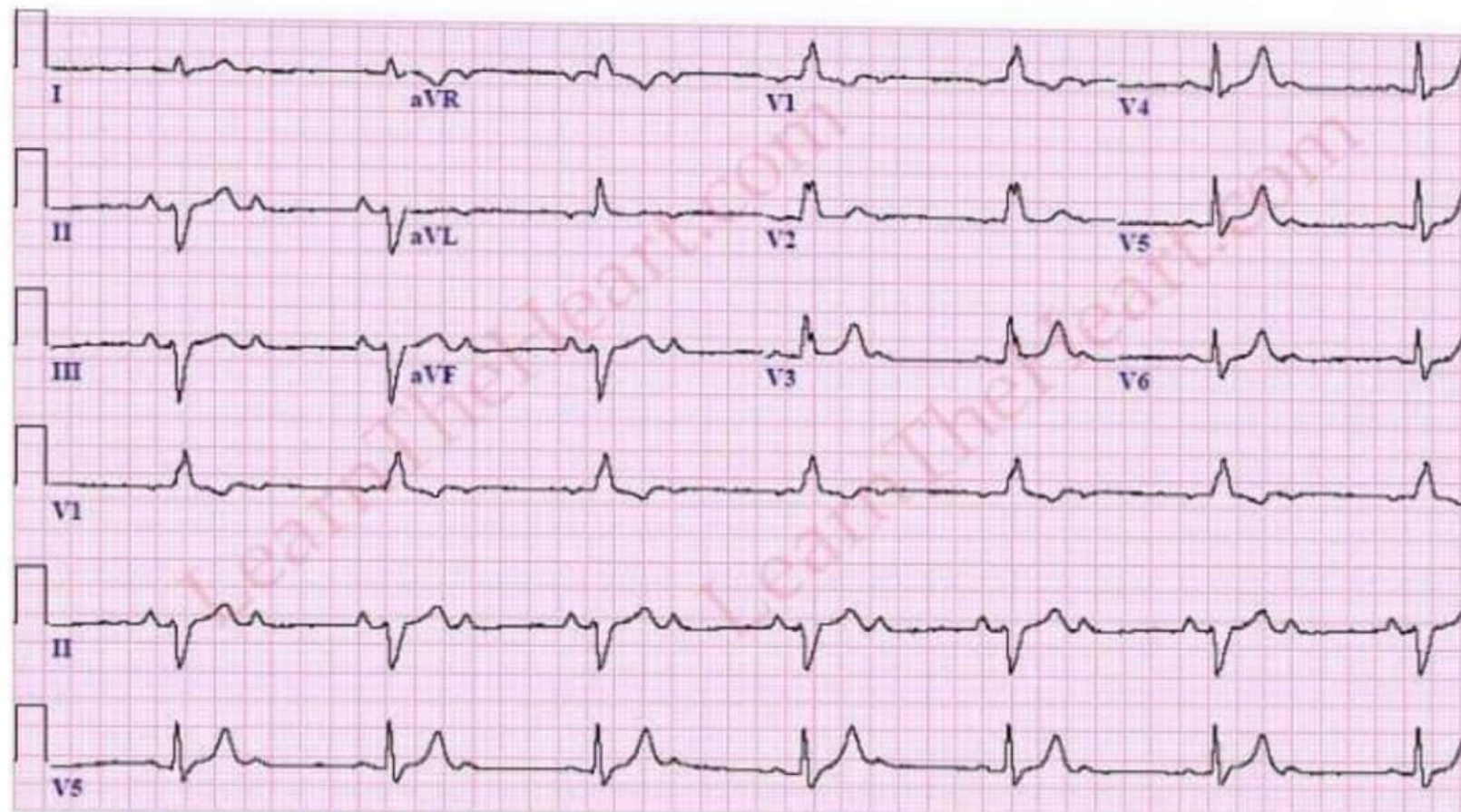


ECG Case #41 - Question #1

A 41 year old female with a history of Lyme disease is admitted to the hospital with intermittent dizziness and an episode of pre-syncope. Her blood pressure is 120/80, heart rate 40, respirations 12, and oxygen saturation 99% on room air. Physical examination is unremarkable. Laboratory studies are normal as well. Below is her ECG. What are the ECG findings?

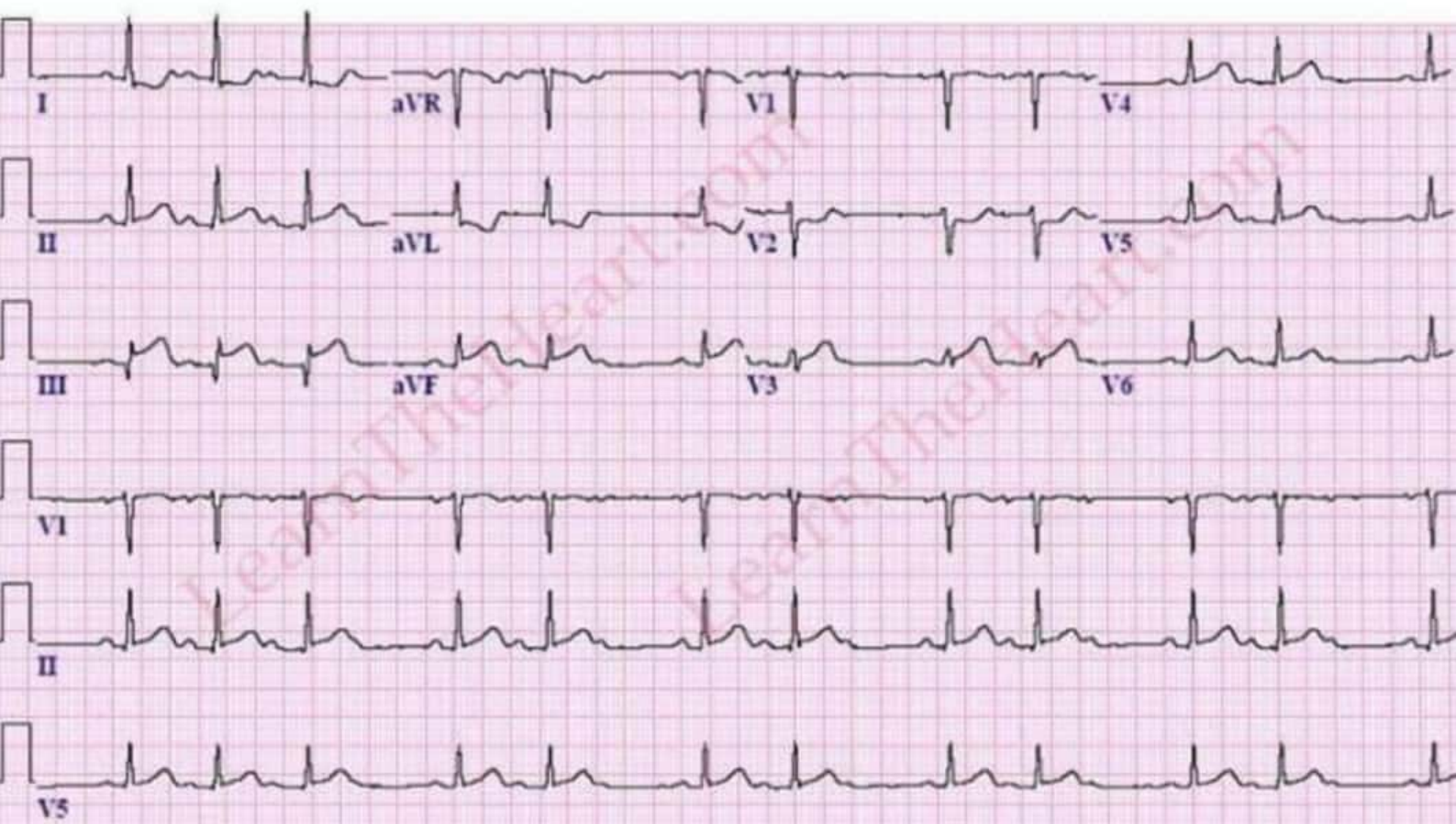


ECG Case #1 - Question #1

A 55 year old male with a history of hypertension, dyslipidemia, and diabetes mellitus presents to the emergency department with substernal chest pain radiating to his left arm, diaphoresis and shortness of breath. He has vomited twice and now is intermittently feeling lightheaded.

His temperature is 37.4, heart rate 70, blood pressure 110/70, and respiratory rate 24. His physical exam reveals no JVD, mild bibasilar rales on lung exam, his heart sounds are regularly irregular, and an S4 heart sound is present. His ECG is below.

What are the main findings on the below ECG tracing?

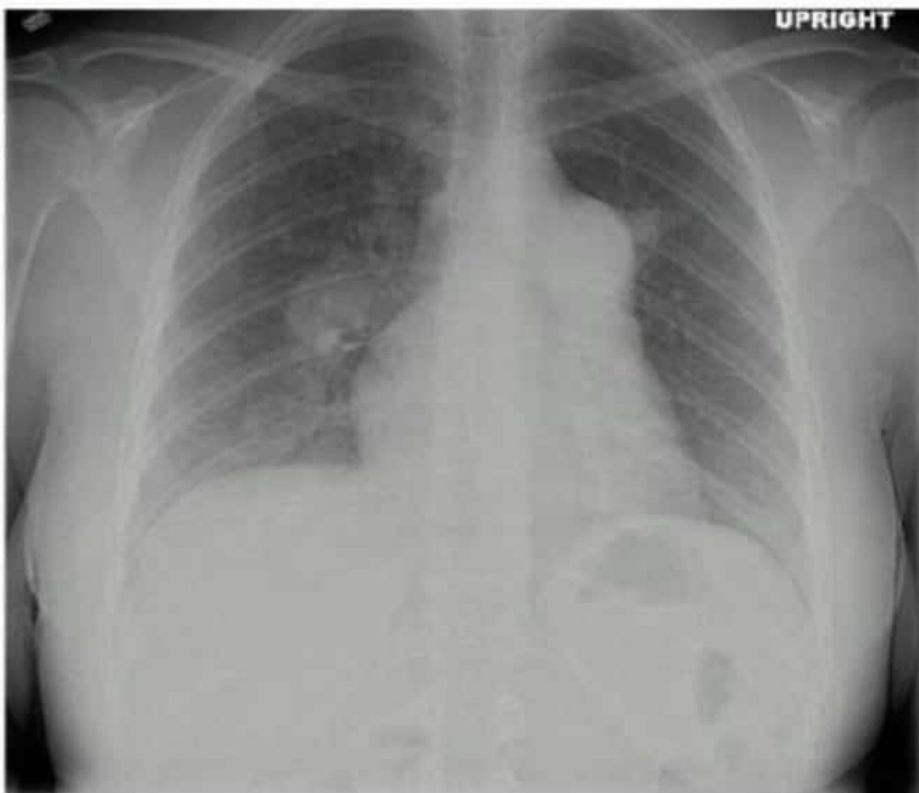
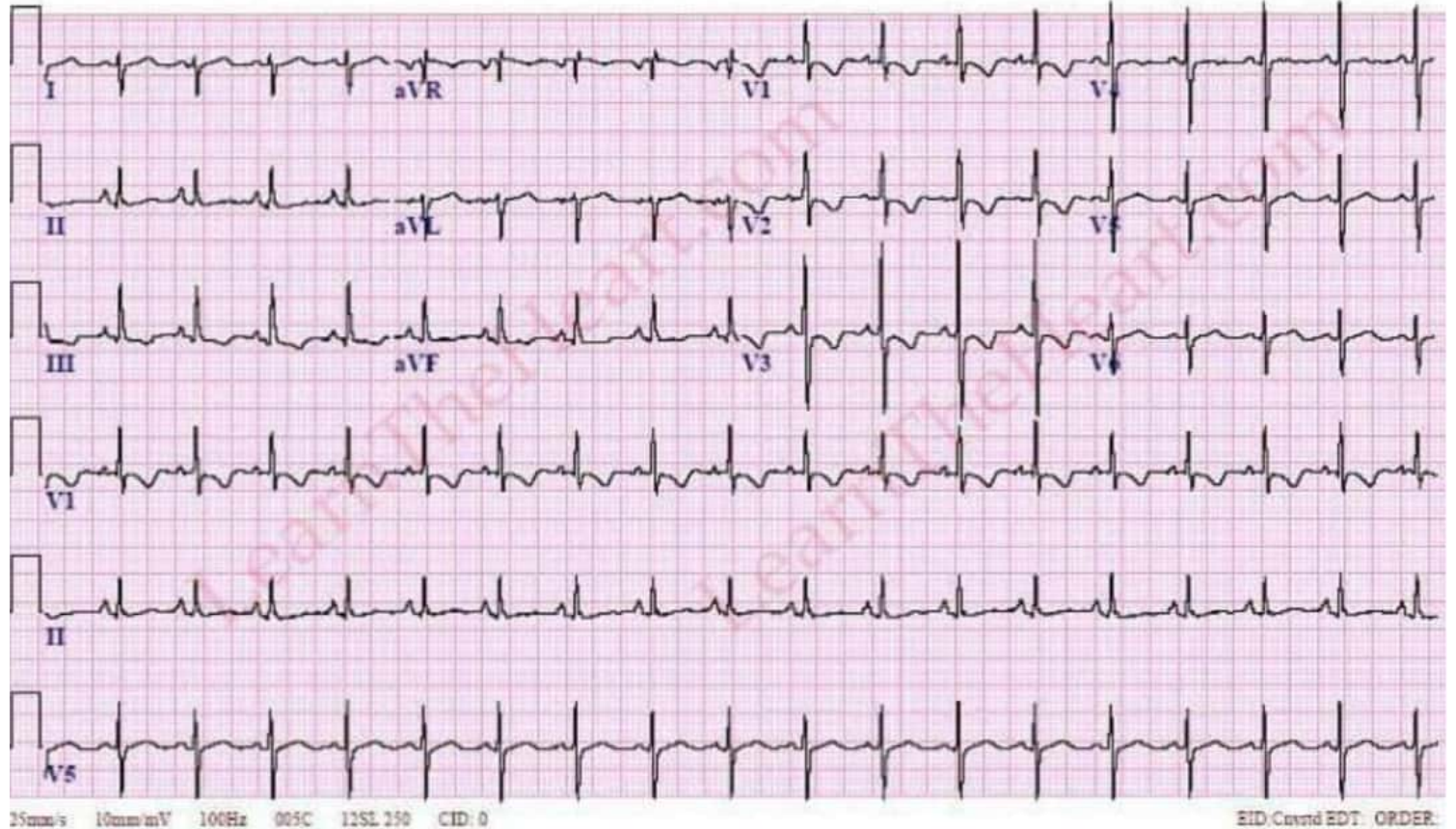


ECG Case #4 - Question #1

A 26 year old female with a history of HIV infection presents to the emergency room with a complaint of increased dyspnea on exertion and lower extremity edema over the past 6 months. She denies chest pain, paroxysmal nocturnal dyspnea or orthopnea.

Her temperature is 37.1, blood pressure 92/50, heart rate 108, respiratory rate 20. She has large V waves in her jugular venous pulsations, a III/VI holosystolic murmur at the left lower sternal border which gets louder with inspiration, and a right ventricular S4 heart sound is heard. A pulsatile liver is palpated. Her ECG and chest x-ray are below.

What are the ECG findings?





Obayda Mumun Diraneyya • 1st

Pediatric Cardiologist

9h • 🌐

10- year-old girl with this ECG, what is your interpretation?

[#pedcard](#) [#pediatriccardiology](#) [#ECG](#) [#electrophysiology](#)

