

## IMPORTANT NOTE:

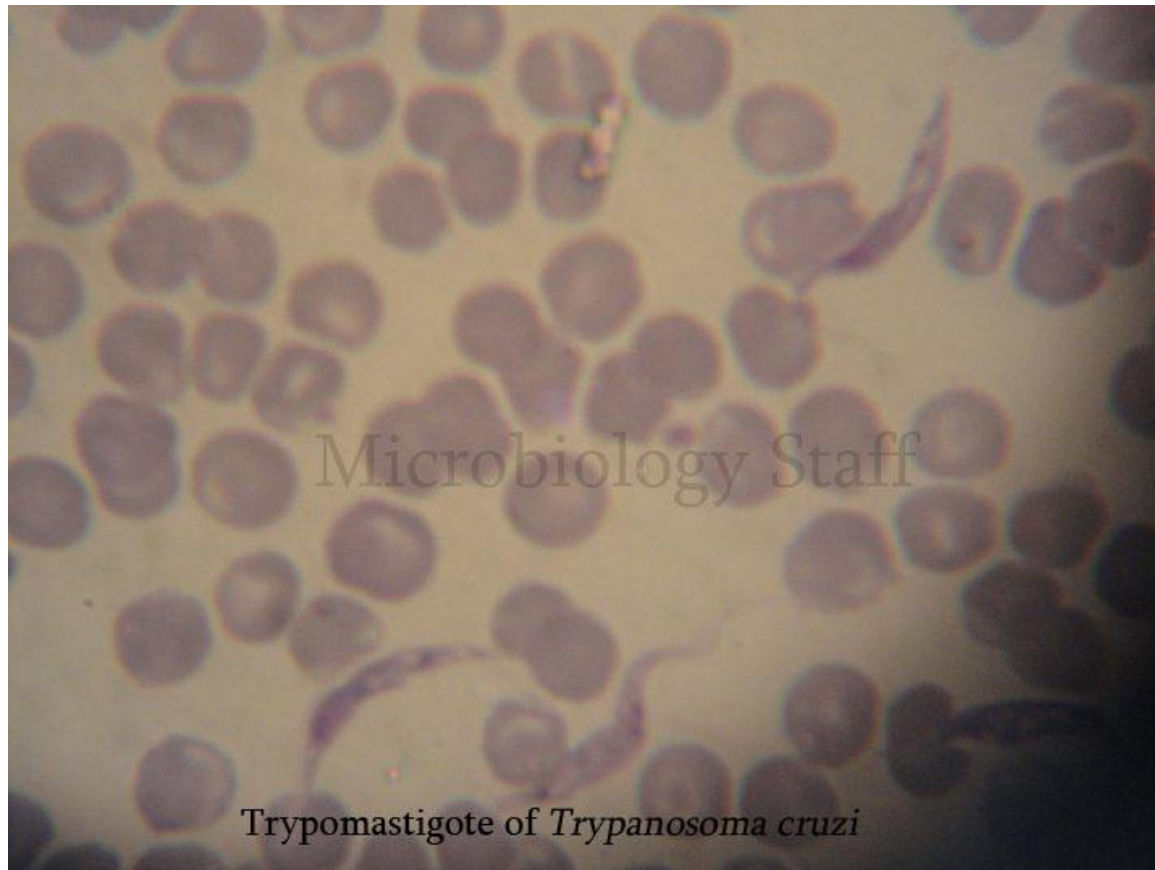
The following spots were removed: *D. caninum* scolex, *Hymenolepis diminuta* gravid segment, *Hymenolepis diminuta* mature segment, *Hymenolepis nana* gravid segment, *Hymenolepis nana* mature segment

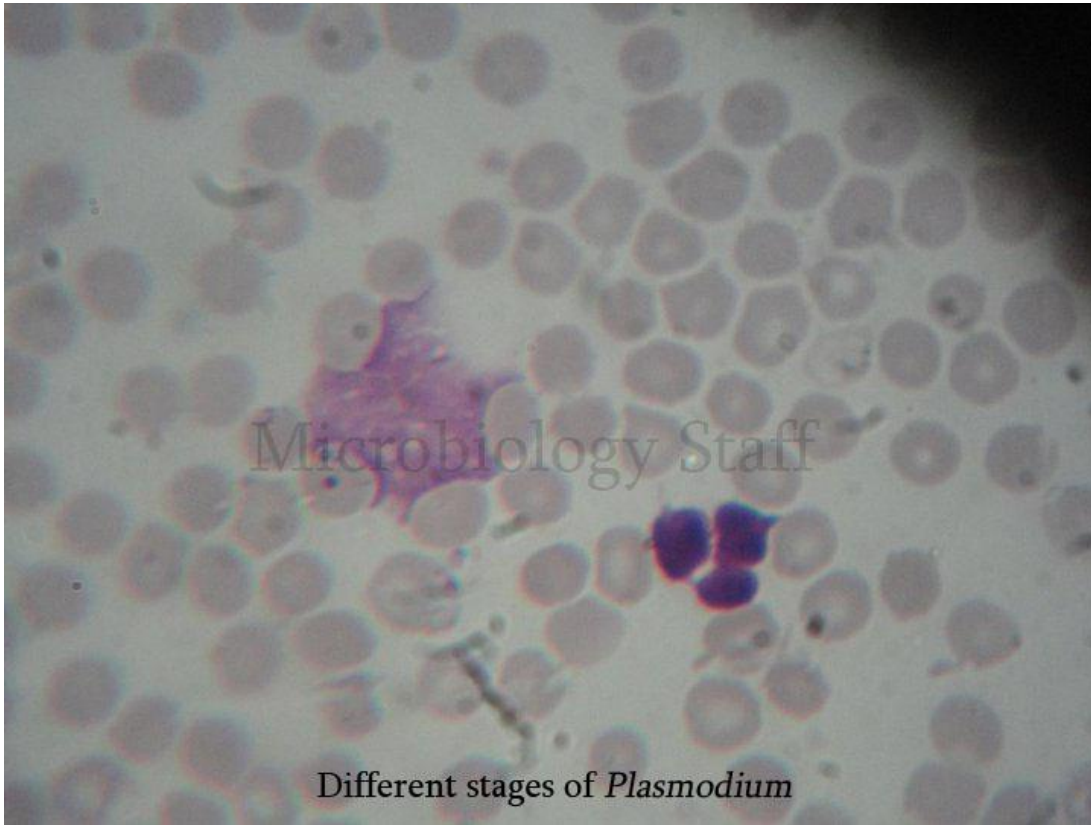
---

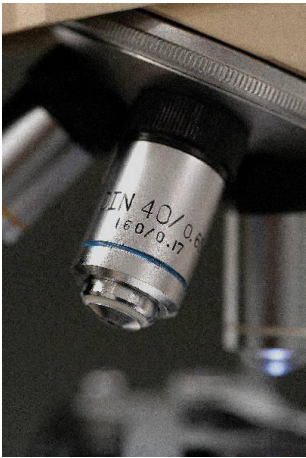
## SECOND YEAR PARASITOLOGY COURSE SPOTS



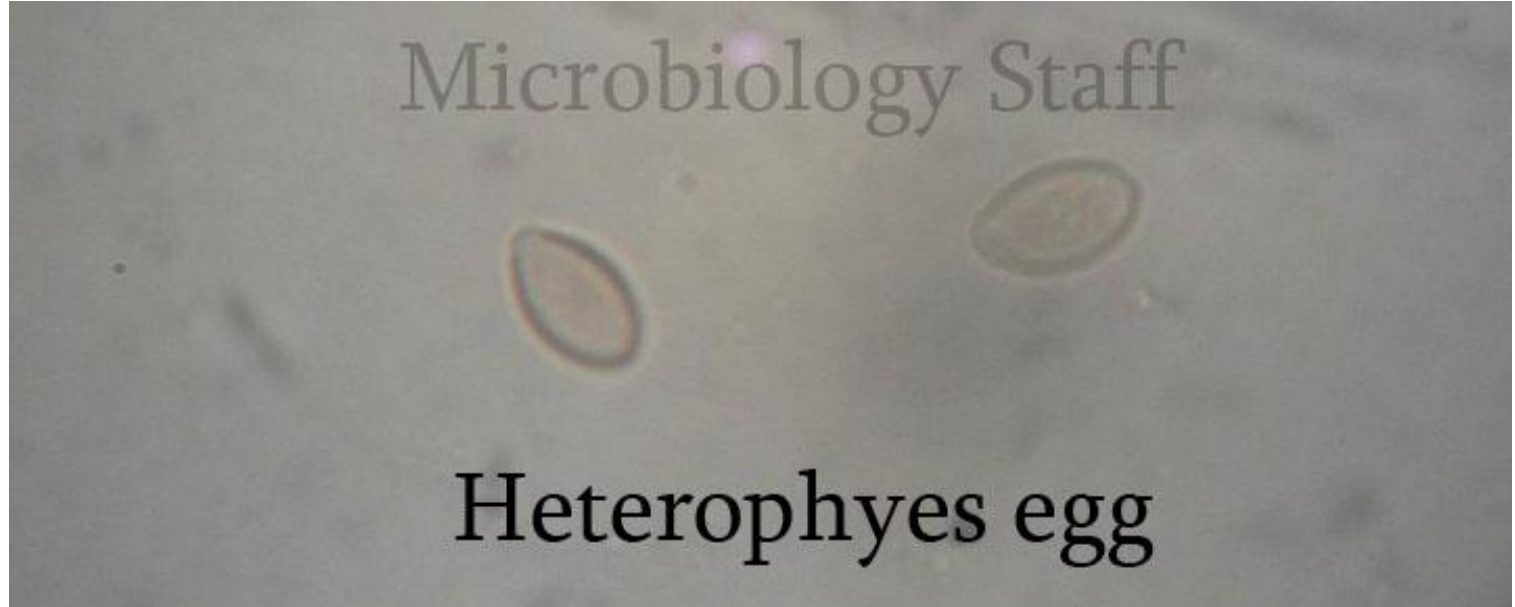
Oil Immersion Lens Spots (White Line)







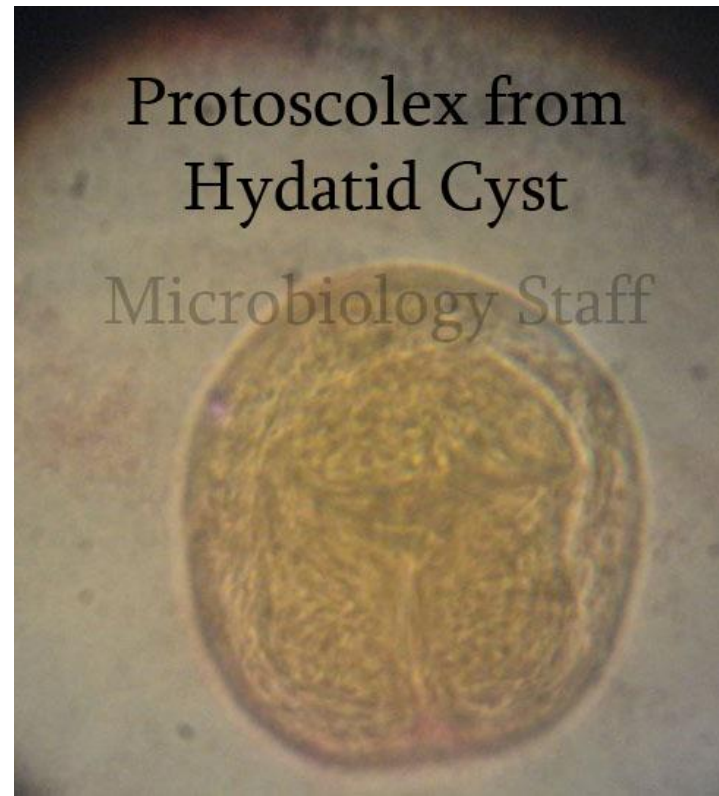
## High Power Lens Spots (Blue Line)





Microbiology Staff

Trichuris egg



Protoscolex from  
Hydatid Cyst

Microbiology Staff



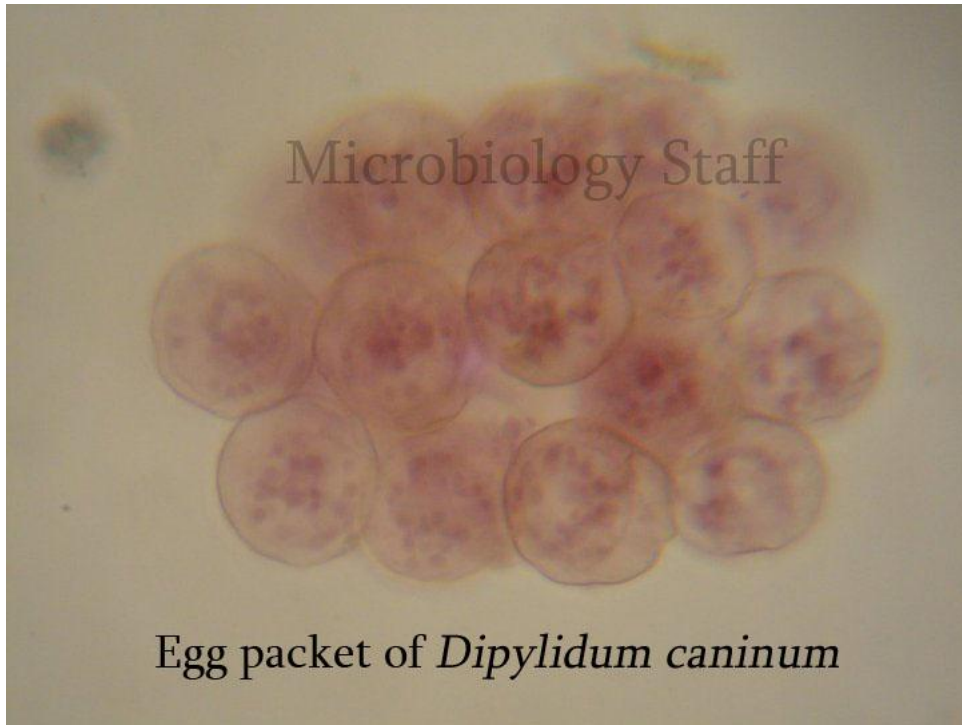
Fasciola egg

Microbiology Staff



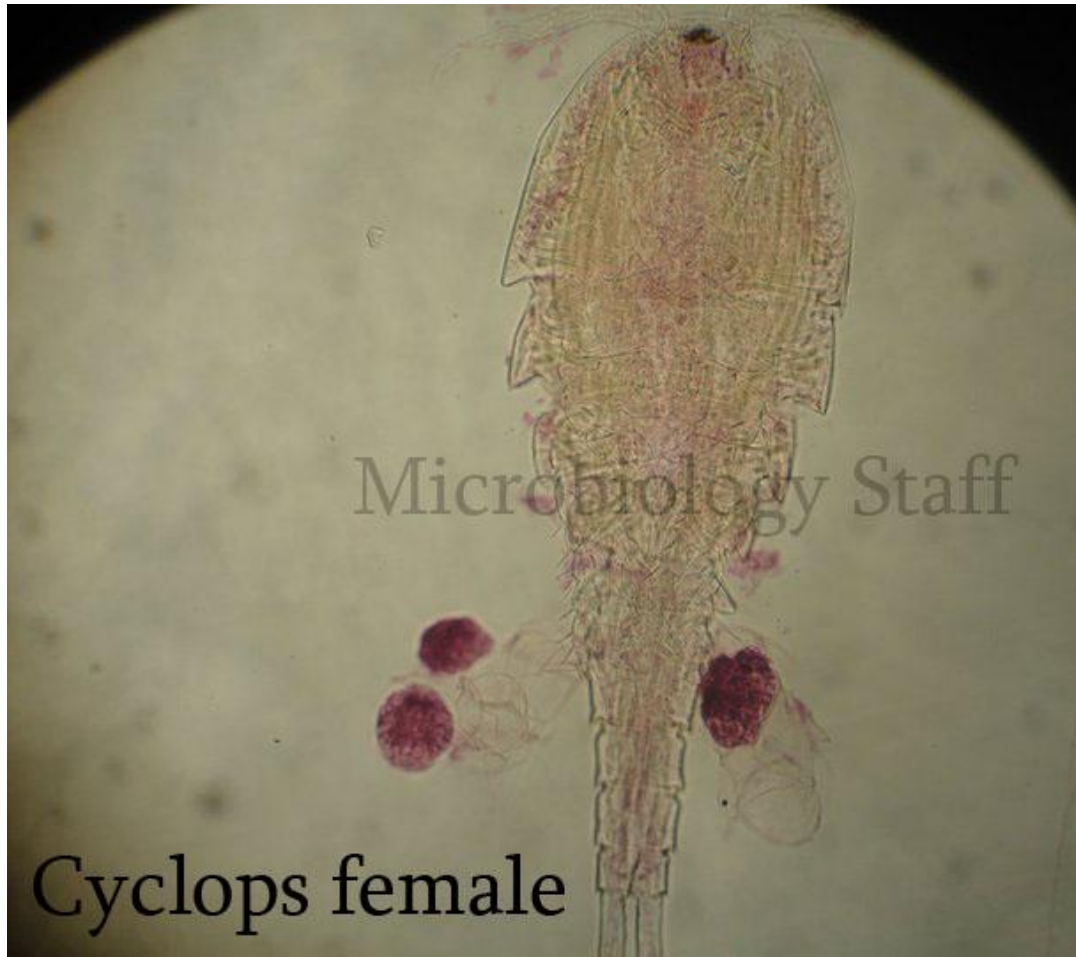
Microbiology Staff

Schistosoma cercaria



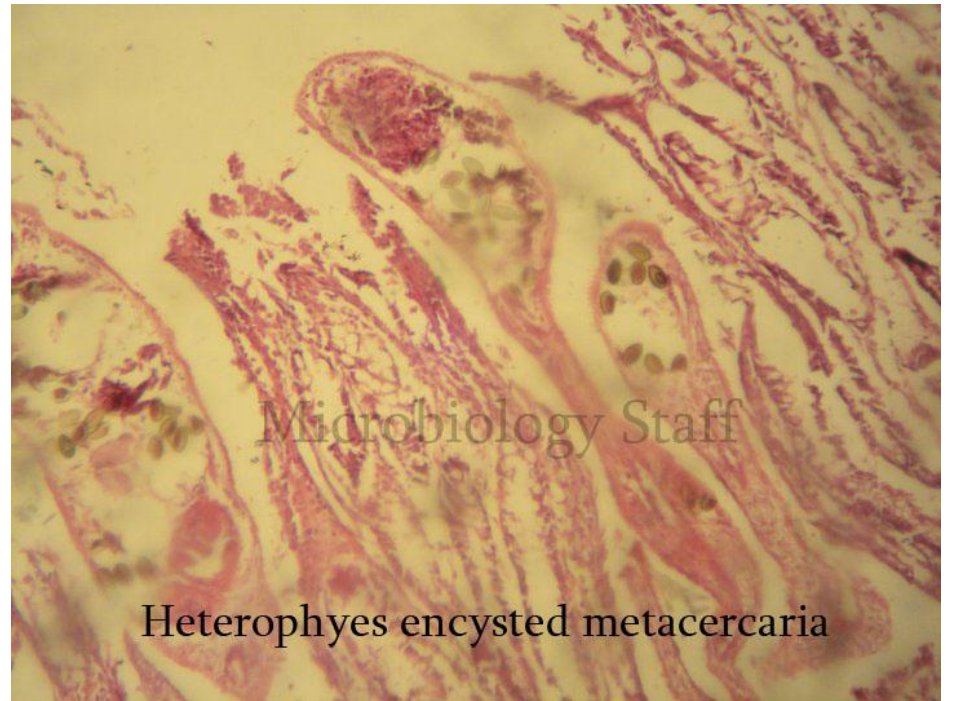


## Low Power Lens Spots (Yellow Line)





Heterophyes adult



Heterophyes encysted metacercaria



Mite

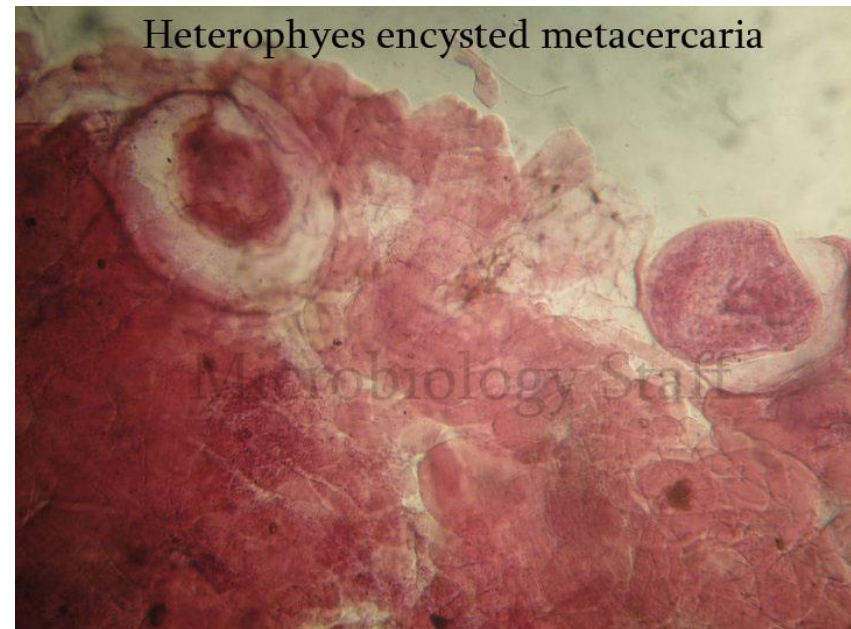


Bed Bug

*Trichinella spiralis* larva



Heterophyes encysted metacercaria

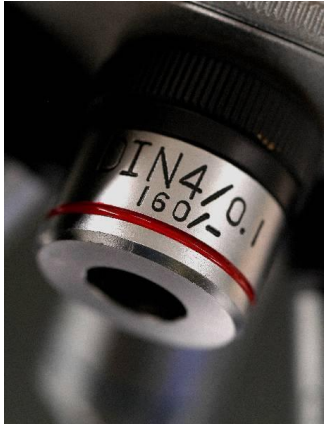


Microbiology Staff

*Trichinella spiralis* female







4X Lens Spots (Red Line)



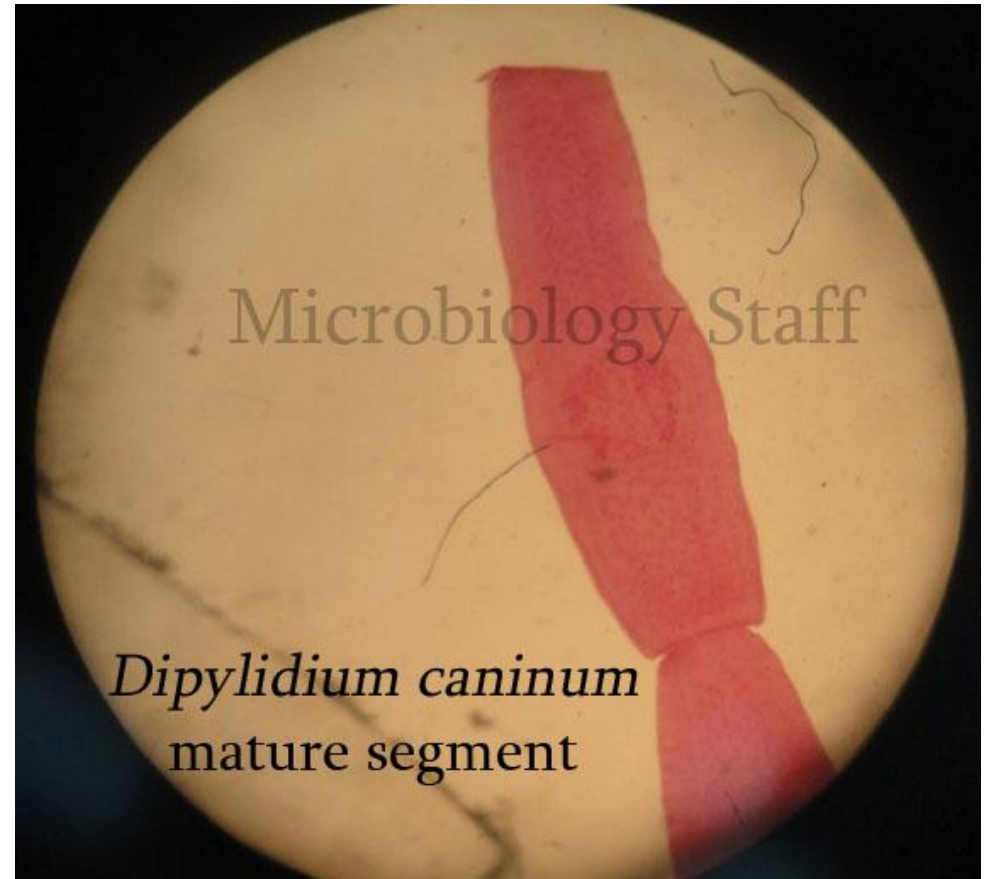
Enterobius female

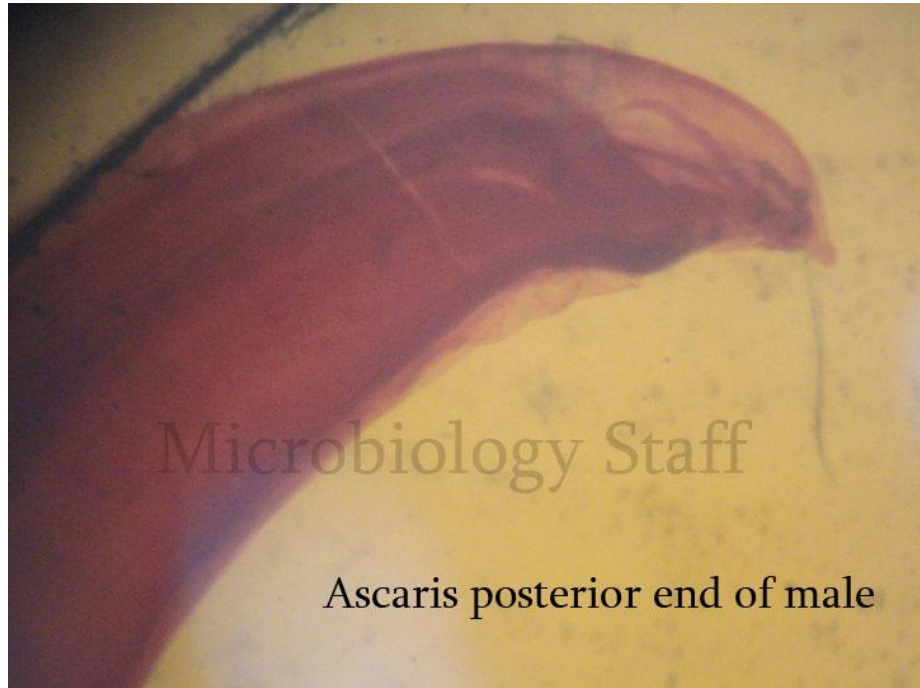
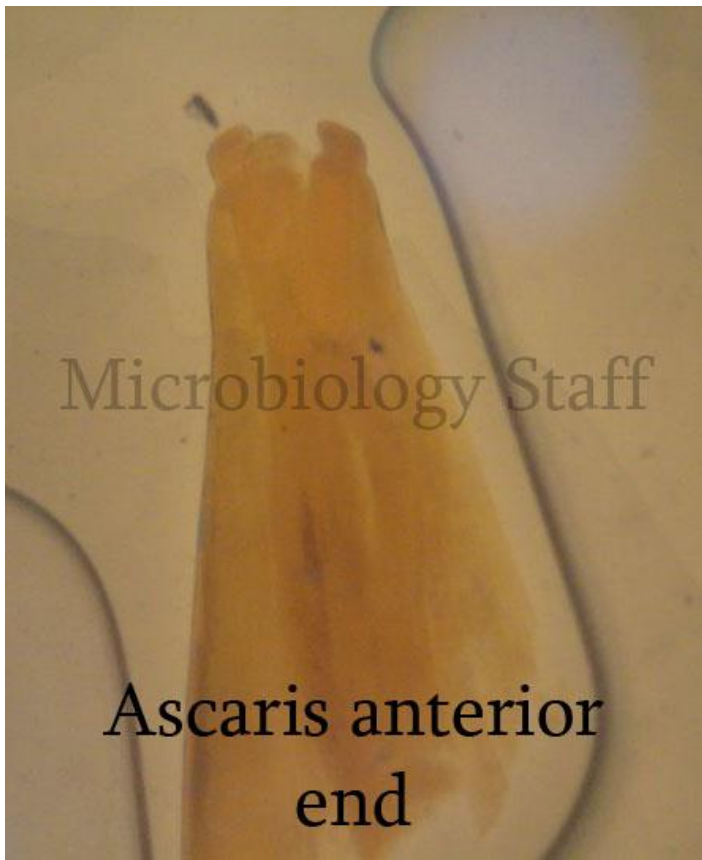


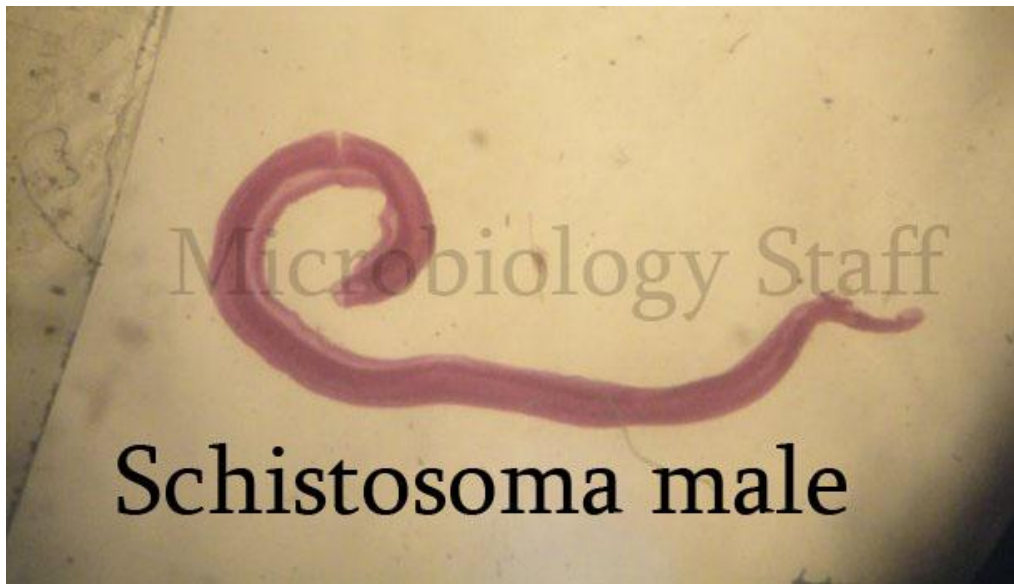
Echinococcus adult

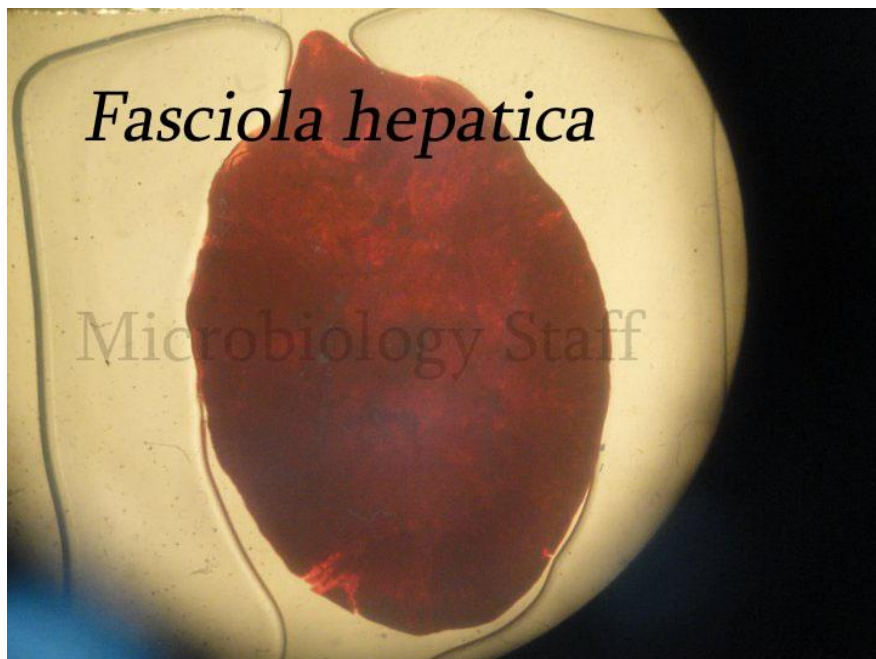


## Magnifier Spots









SNAILS:



دوسر  
شے

**Lymnaea caillaudi snail**  
**(Intermediate host of Fasciola gigantica)**



Microbiology Staff

**Bulinus truncatus snail**  
**(Intermediate host of *S. haematobium* )**





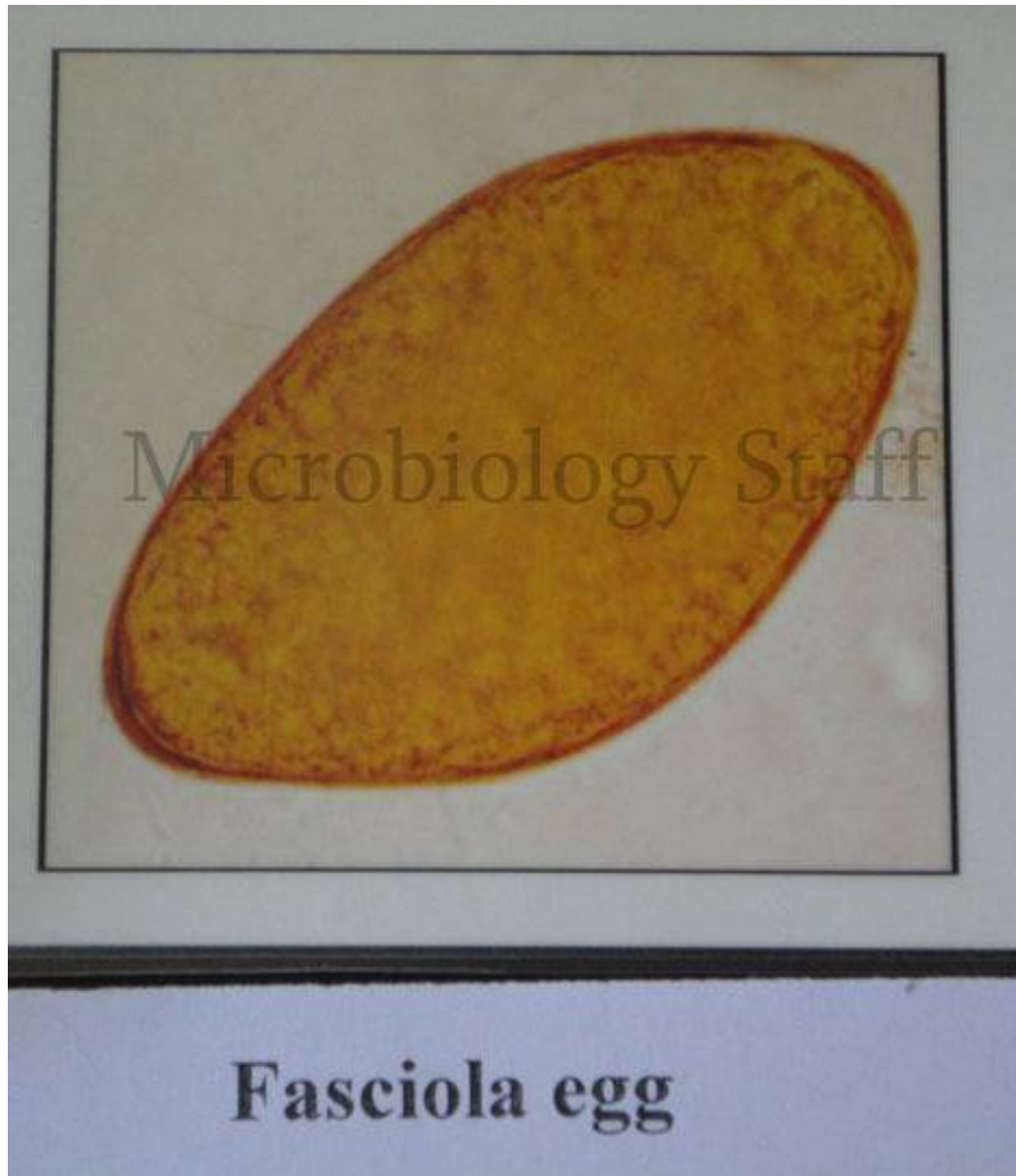
**Biomphalaria alexandrina snail  
(Intermediate host of *S. mansoni*)**



Microbiology Staff

**Pirenella conica snail**  
(Intermediate host of *Heterophyes heterophyes*)

PICTURES:





Microbiology Staff

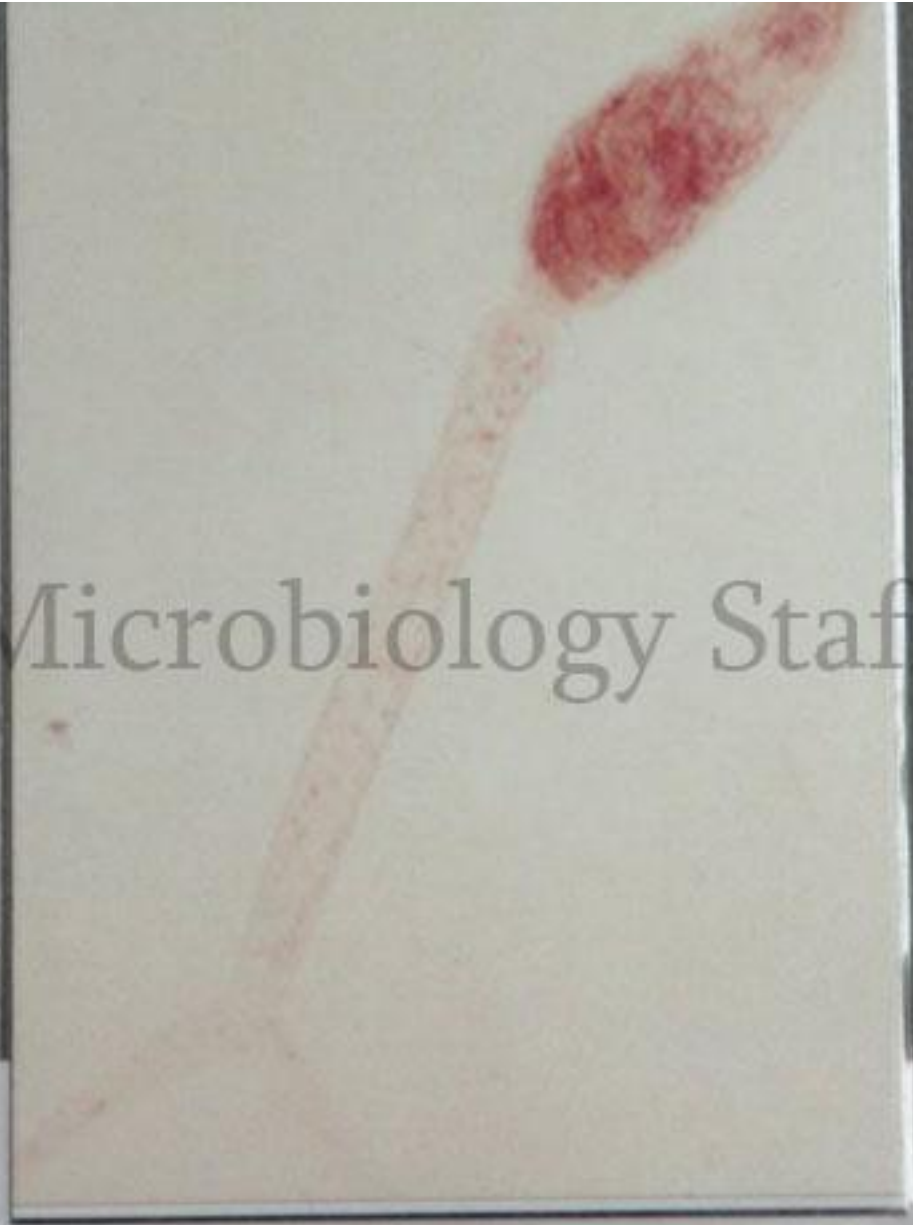
**Heterophyes heterophyes egg**

A large, oval-shaped, yellowish-brown egg of Ascaris lumbricoides is shown under a microscope. The egg has a thick, textured outer shell and a smaller, rounded protrusion on its right side. The background is a light, slightly mottled grey.

Microbiology Staff

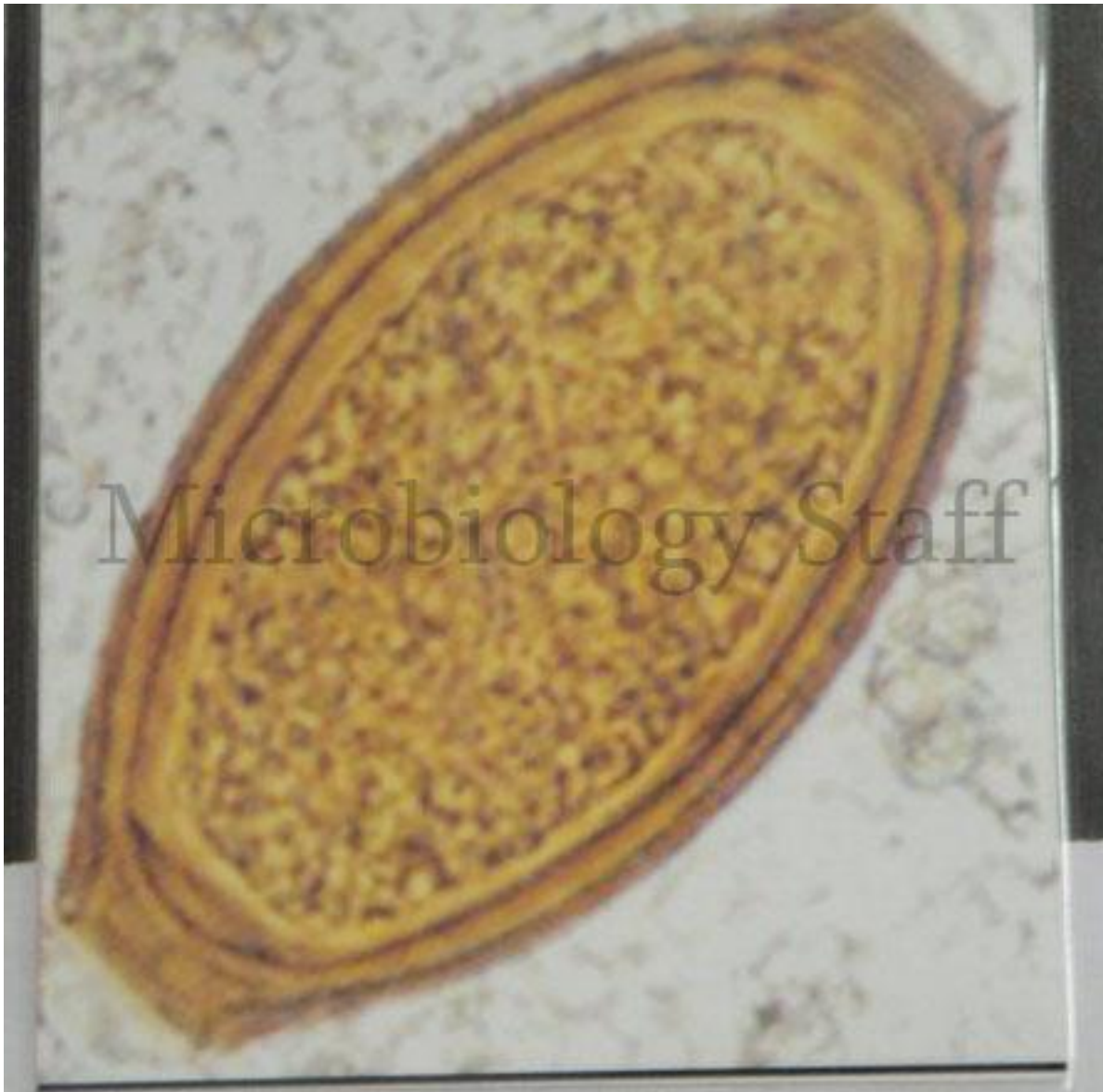
*Ascaris lumbricoides*

Egg



Microbiology Staff

**Cercaria of Schistosoma species**



Microbiology Staff

*Trichuris trichiura*

Egg



Microbiology Staff

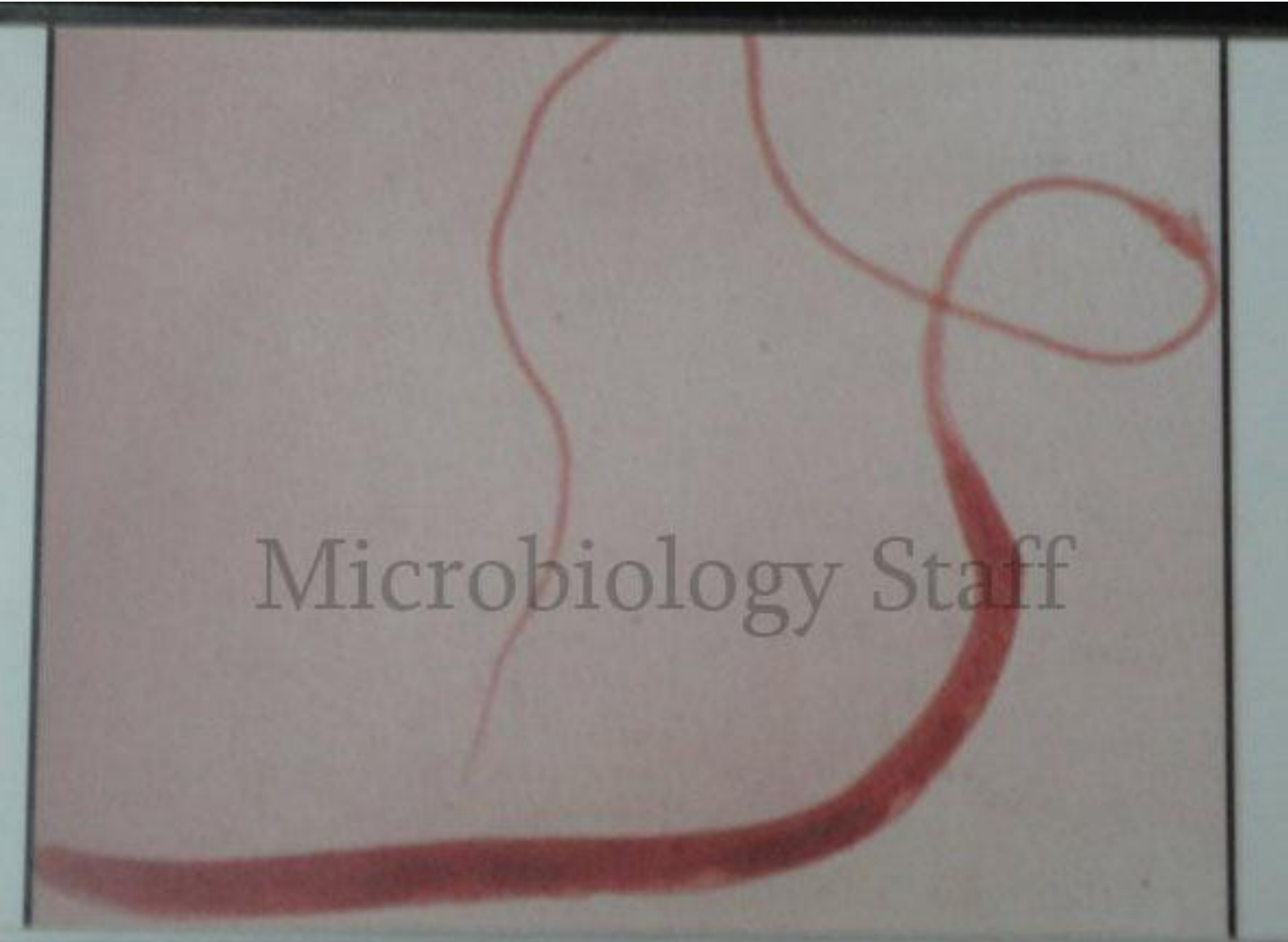
Bed bug





Microbiology Staff

**Schistosoma haematobium egg**

A light micrograph of an adult female *Trichuris trichiura* (whipworm) worm. The worm is stained pinkish-red and is shown in a curved, S-like position. The anterior end is at the top right, where the head is visible. The body is thicker in the middle and tapers to a thin, whip-like tip at the posterior end. The worm is set against a light, slightly textured background.

Microbiology Staff

***Trichuris trichiura***

Adult female

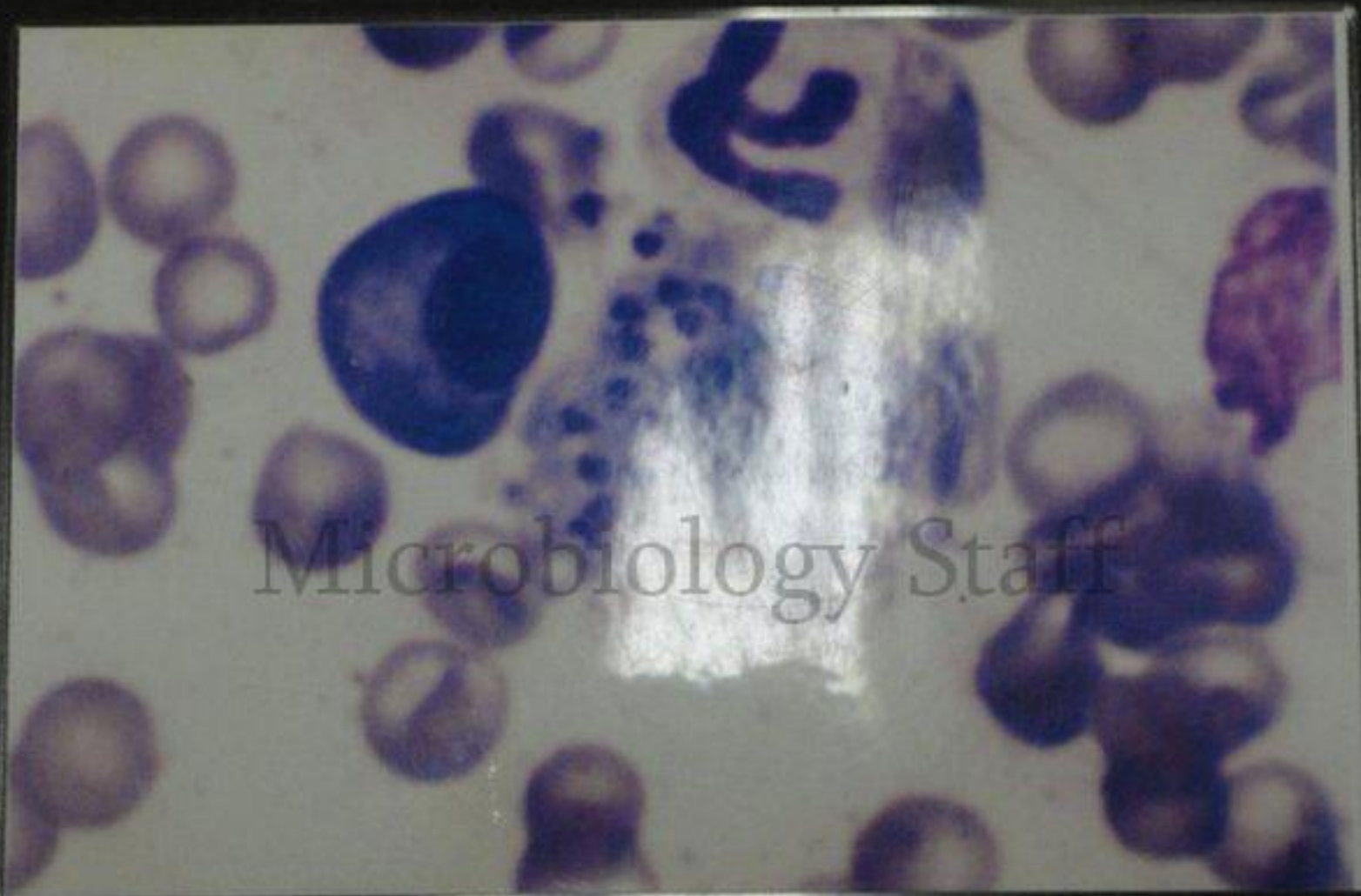


Microbiology Staff

48  
Trichomonas vaginalis trophozoite



**Schistosoma mansoni male and female couple**



Microbiology Staff

34

Macrophages with leishmania bodies



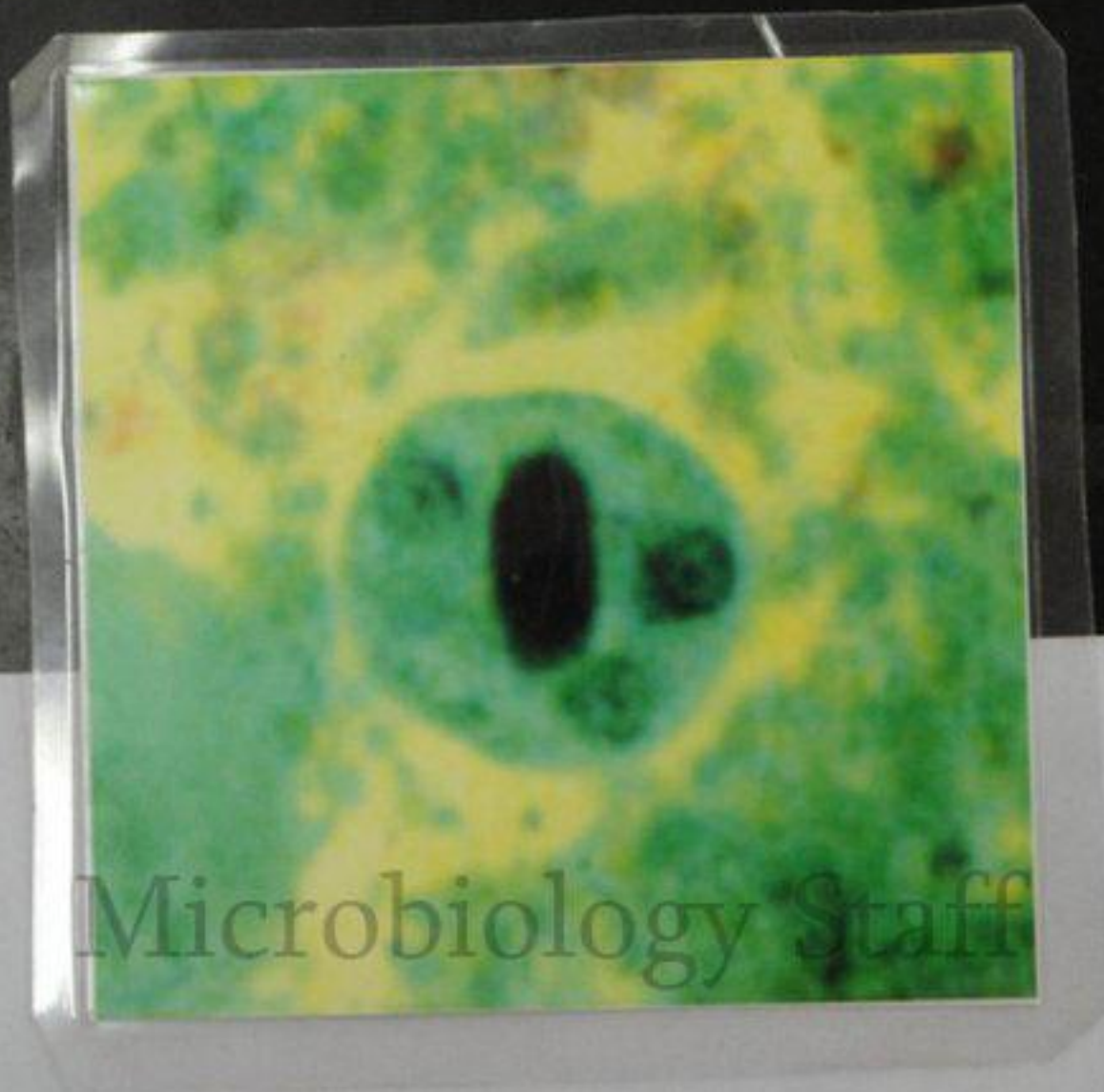
**Wuchereria bancrofti larva**

43



2/20/22

**Lymnaea caillaudi snail**  
**(Intermediate host of Fasciola gigantica)**



Microbiology Staff

Entamoeba histolytica cyst

37



A light micrograph showing a large, pear-shaped trophozoite of Entamoeba histolytica. The organism has a prominent, centrally located, dark-staining nucleus with a distinct chromatin pattern and a small, dark, central karyosome. The cytoplasm is granular and contains numerous small, dark-staining granules. The trophozoite is surrounded by other smaller, less distinct organisms and debris, all stained with a blue dye. The background is a light, slightly textured surface.

Microbiology Staff

Entamoeba histolytica trophozoite



Microbiology Staff

41

*Enterobius vermicularis*  
Adult male



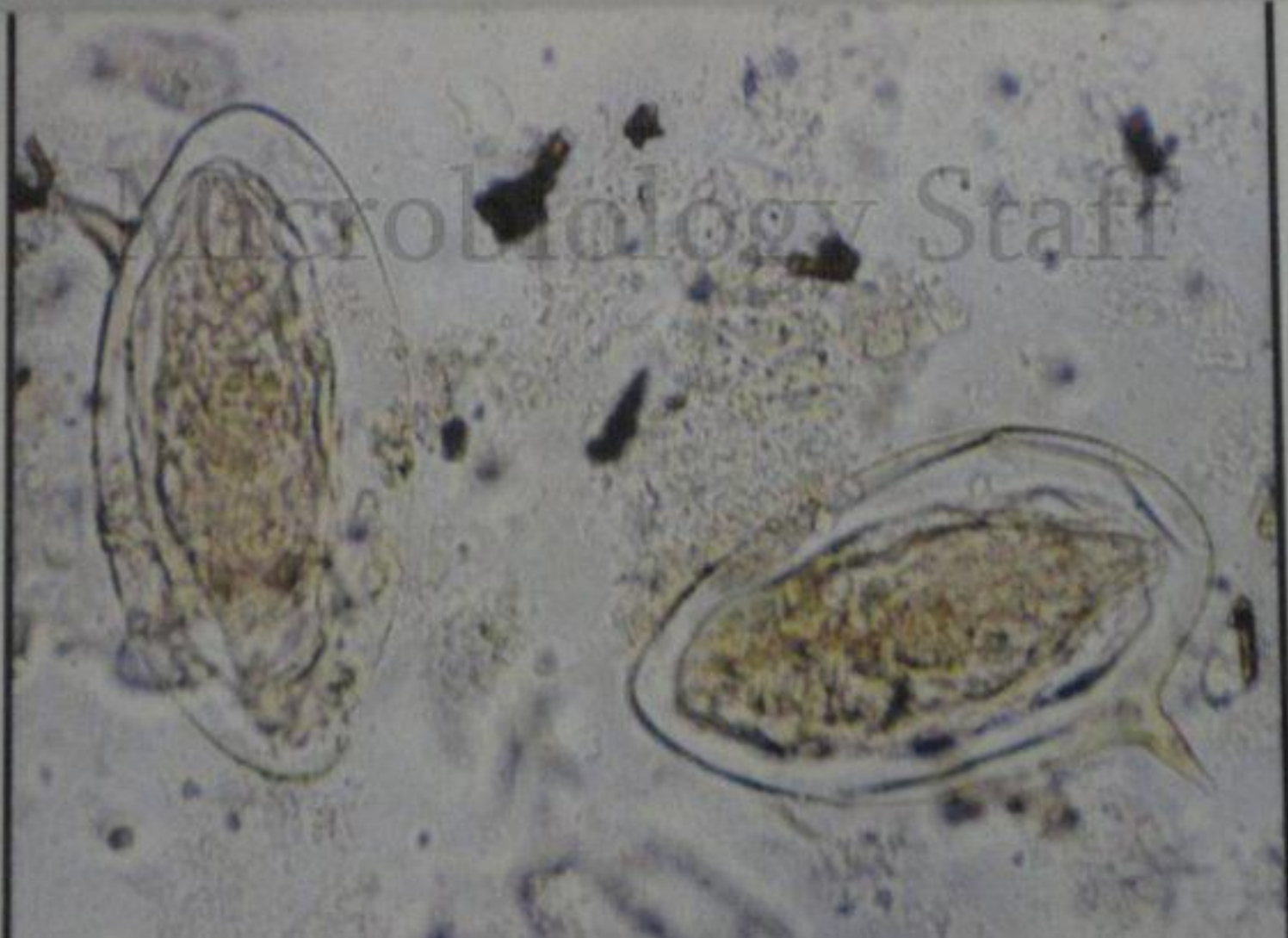
Microbiology Staff

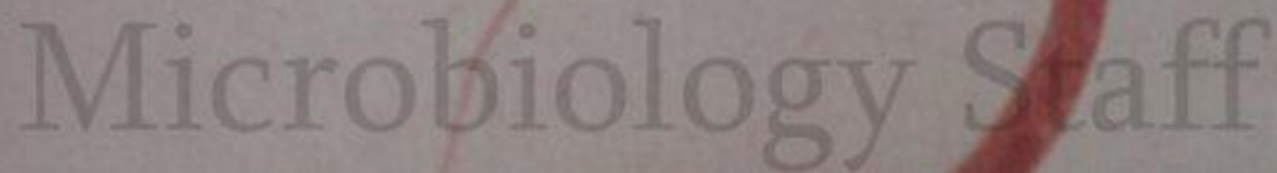


© CD-ROM ILLUSTRATED LECTURE NOTES ON TROPICAL MEDICINE

**Bulinus truncatus snail**  
**(Intermediate host of *S. haematobium* )**

# Schistosoma mansoni egg



A large, semi-transparent watermark with the text "Microbiology Staff" is centered over the slide. The text is in a serif font and is light gray in color.

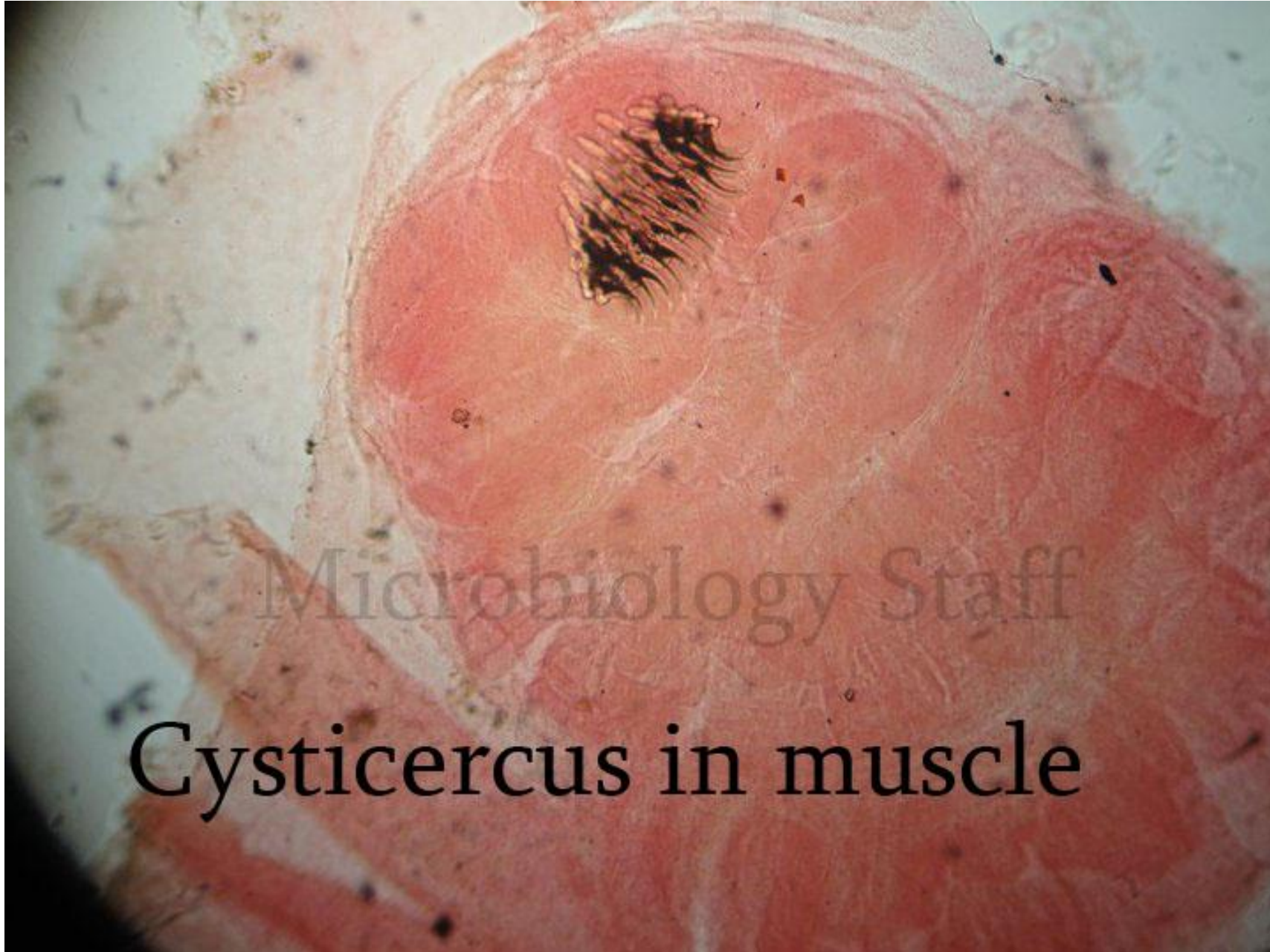
Microbiology Staff

***Trichuris trichiura***

Adult female



+ ADDED SPOT UNDER MICROSCOPE:



Microbiology Staff  
Cysticercus in muscle